

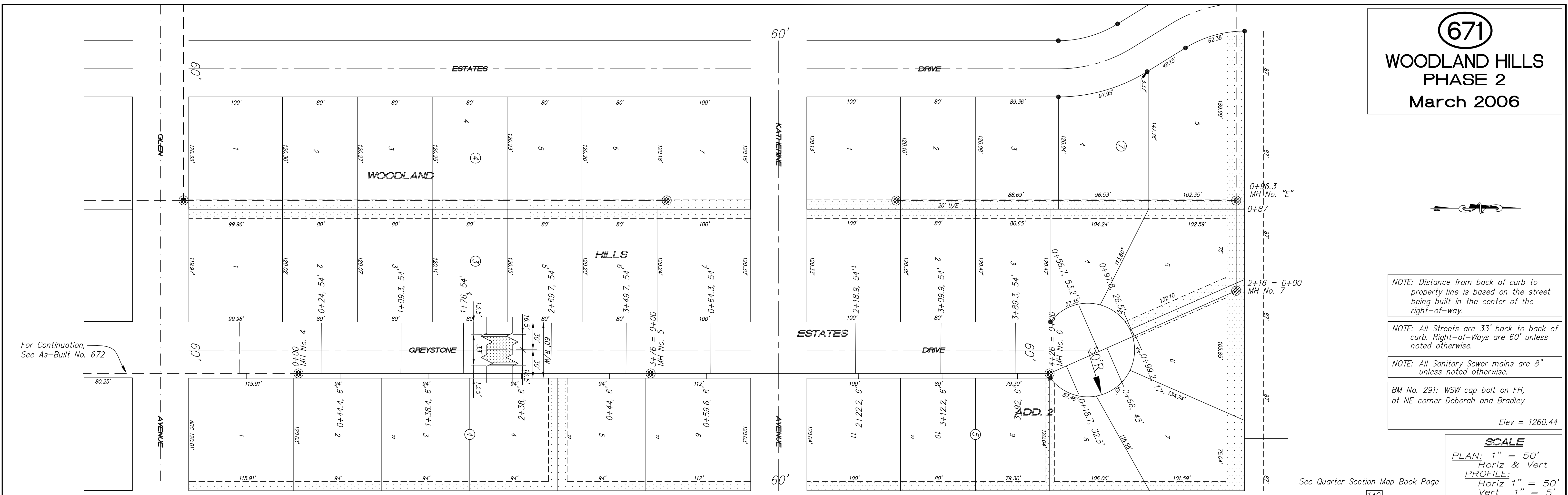
671

WOODLAND HILLS PHASE 2 March 2006

- NOTE: Distance from back of curb to property line is based on the street being built in the center of the right-of-way.
- NOTE: All Streets are 33' back to back of curb. Right-of-Ways are 60' unless noted otherwise.
- NOTE: All Sanitary Sewer mains are 8" unless noted otherwise.
- BM No. 291: WSW cap bolt on FH, at NE corner Deborah and Bradley
Elev = 1260.44

SCALE
 PLAN: 1" = 50'
 Horiz & Vert
 PROFILE: 1" = 50'
 Horiz 1" = 50'
 Vert 1" = 5'

See Quarter Section Map Book Page 140



PROJECT TITLE Sanitary Sewer As-Built Drawing						CONTRACTOR -	DESIGN -	CHECKED -	CITY OF SALINA Dept. of Public Works Engineering Division 300 WEST ASH SALINA, KANSAS 67401 PH: 785.309.5725 FAX: 785.309.5713	DATE Jan 2006	PROJ. NO. Private
NO.	REVISIONS	DATE	BY	NO.	REVISIONS	SCALE As Shown	DRAWN -	APPROVED -		FILENAME 671k.dwg	SHEET OF

For Continuation, See As-Built No. 672