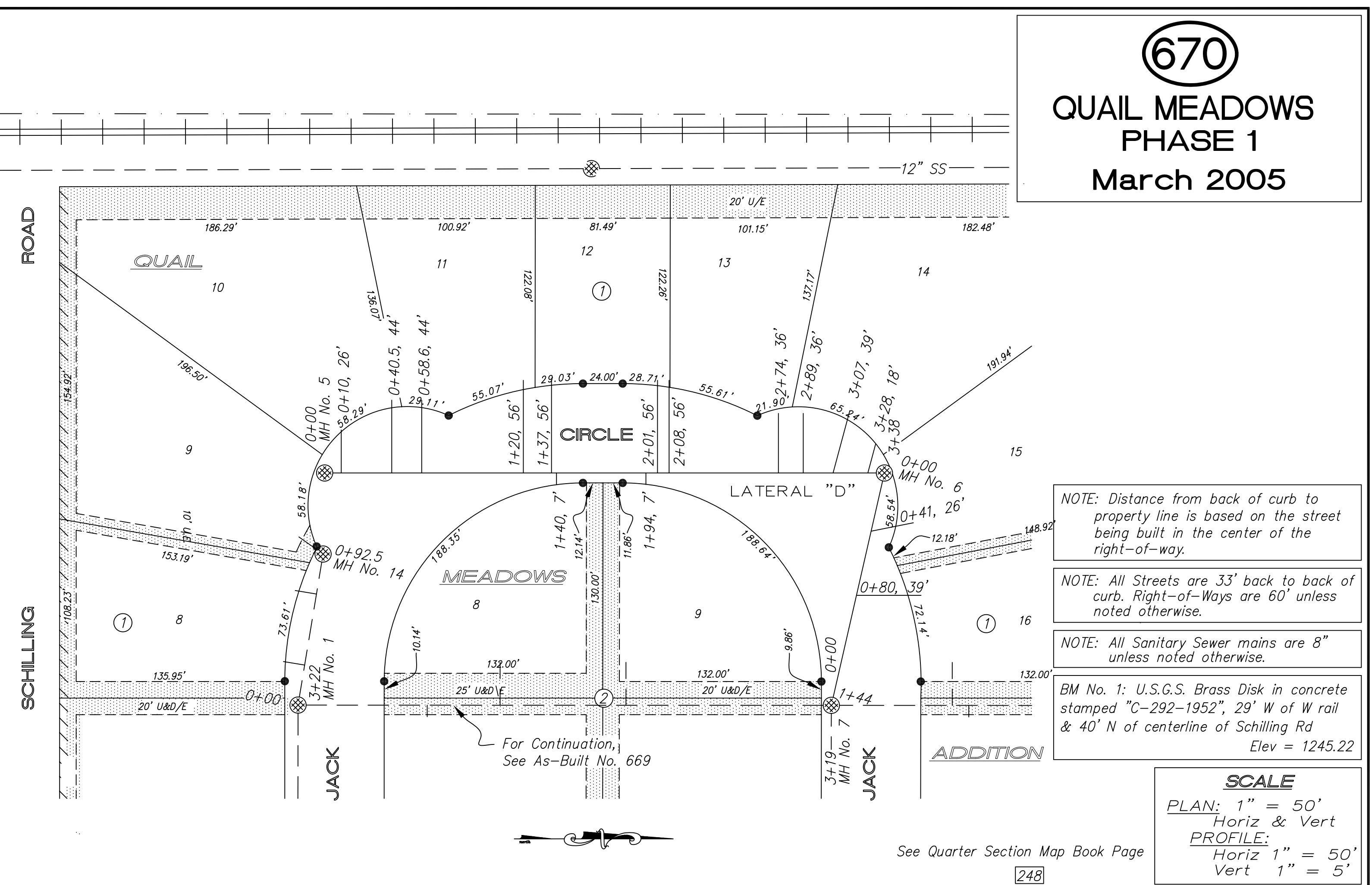


670
QUAIL MEADOWS
PHASE 1
March 2005



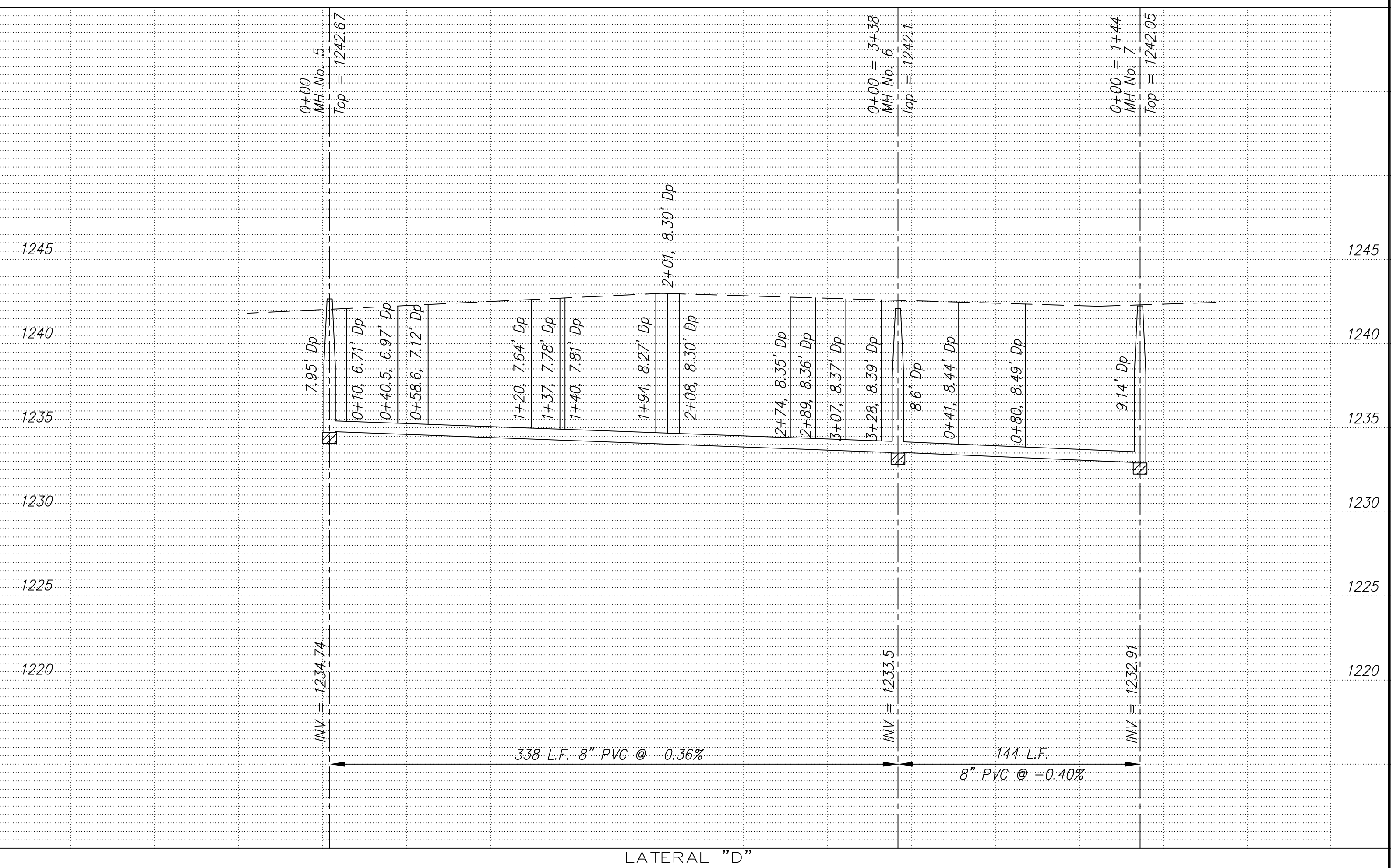
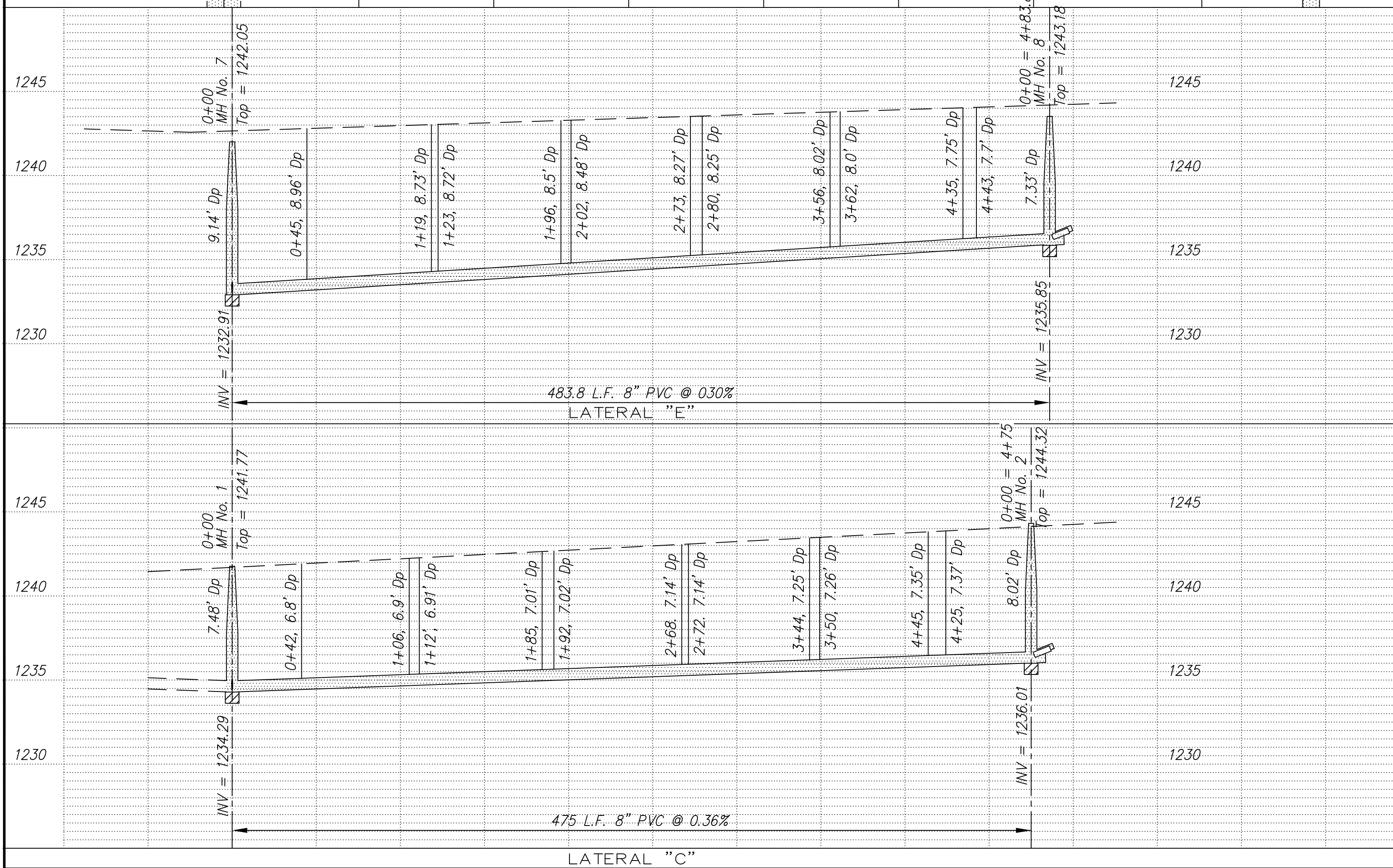
NOTE: Distance from back of curb to property line is based on the street being built in the center of the right-of-way.

NOTE: All Streets are 33' back to back of curb. Right-of-Ways are 60' unless noted otherwise.

NOTE: All Sanitary Sewer mains are 8" unless noted otherwise.

BM No. 1: U.S.G.S. Brass Disk in concrete stamped "C-292-1952", 29' W of W rail & 40' N of centerline of Schilling Rd
 Elev = 1245.22

SCALE
 PLAN: 1" = 50'
 Horiz & Vert
 PROFILE: 1" = 50'
 Horiz 1" = 50'
 Vert 1" = 5'



NO.	REVISIONS	DATE	BY

PROJECT TITLE
Sanitary Sewer As-Built Drawing

CONTRACTOR Stevens Contractors	DESIGN	CHECKED	CITY OF SALINA Dept. of Public Works Engineering Division 300 WEST ASH SALINA, KANSAS 67401 PH: 785.309.5725 FAX: 785.309.5713	DATE Jan 2006	PROJ. NO. Private
SCALE As Shown	DRAWN	APPROVED		FILENAME 670k.dwg	SHEET OF