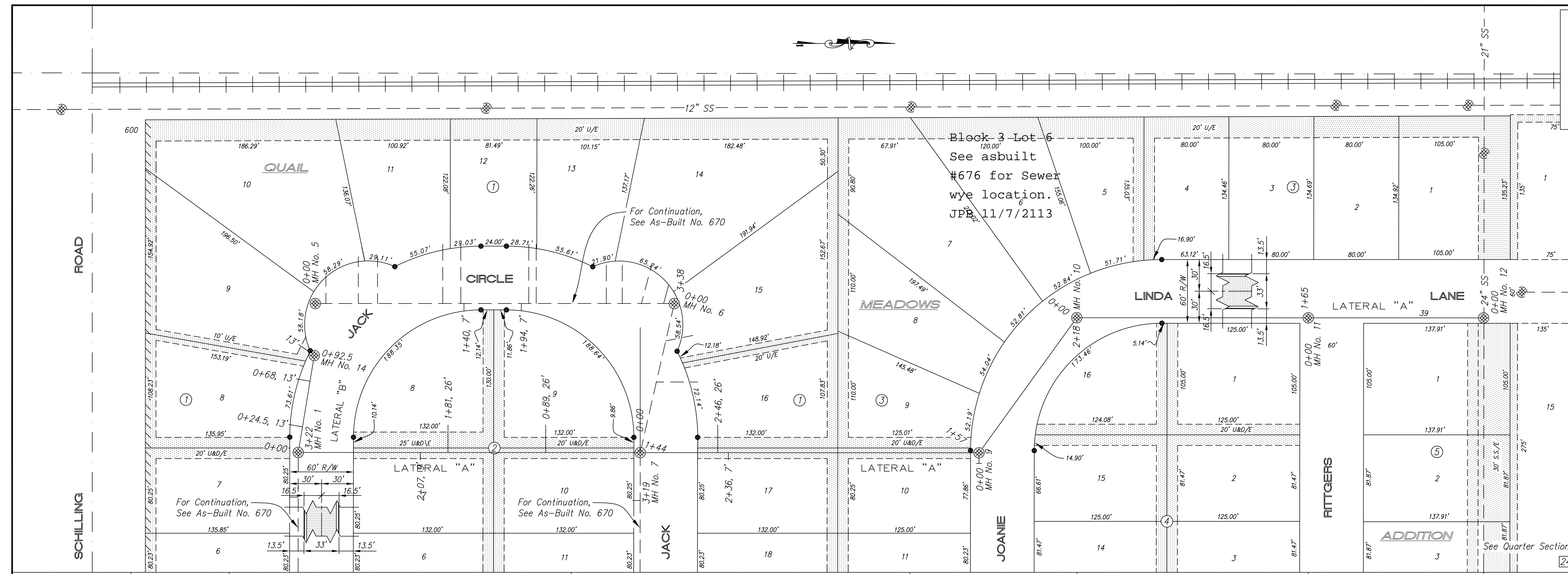


669

QUAIL MEADOWS  
PHASE 1  
March 2005



NOTE: Distance from back of curb to property line is based on the street being built in the center of the right-of-way.  
NOTE: All Streets are 33' back to back of curb. Right-of-Ways are 60' unless noted otherwise.  
NOTE: All Sanitary Sewer mains are 8" unless noted otherwise.  
BM No. 1: U.S.G.S. Brass Disk in concrete stamped "C-292-1952", 29' W of W rail & 40' N of centerline of Schilling Rd  
Elev = 1245.22  
SCALE  
PLAN: 1" = 50'  
Horiz & Vert  
PROFILE: 1" = 50'  
Horiz 1" = 50'  
Vert 1" = 5'



NO.	REVISIONS	DATE	BY

PROJECT TITLE  
**Sanitary Sewer As-Built Drawing**

CONTRACTOR Stevens Contractors	DESIGN	CHECKED	CITY OF SALINA Dept. of Public Works Engineering Division	DATE Jan 2006	PROJ. NO. Private
SCALE As Shown	DRAWN	APPROVED		FILENAME 669k.dwg	SHEET OF