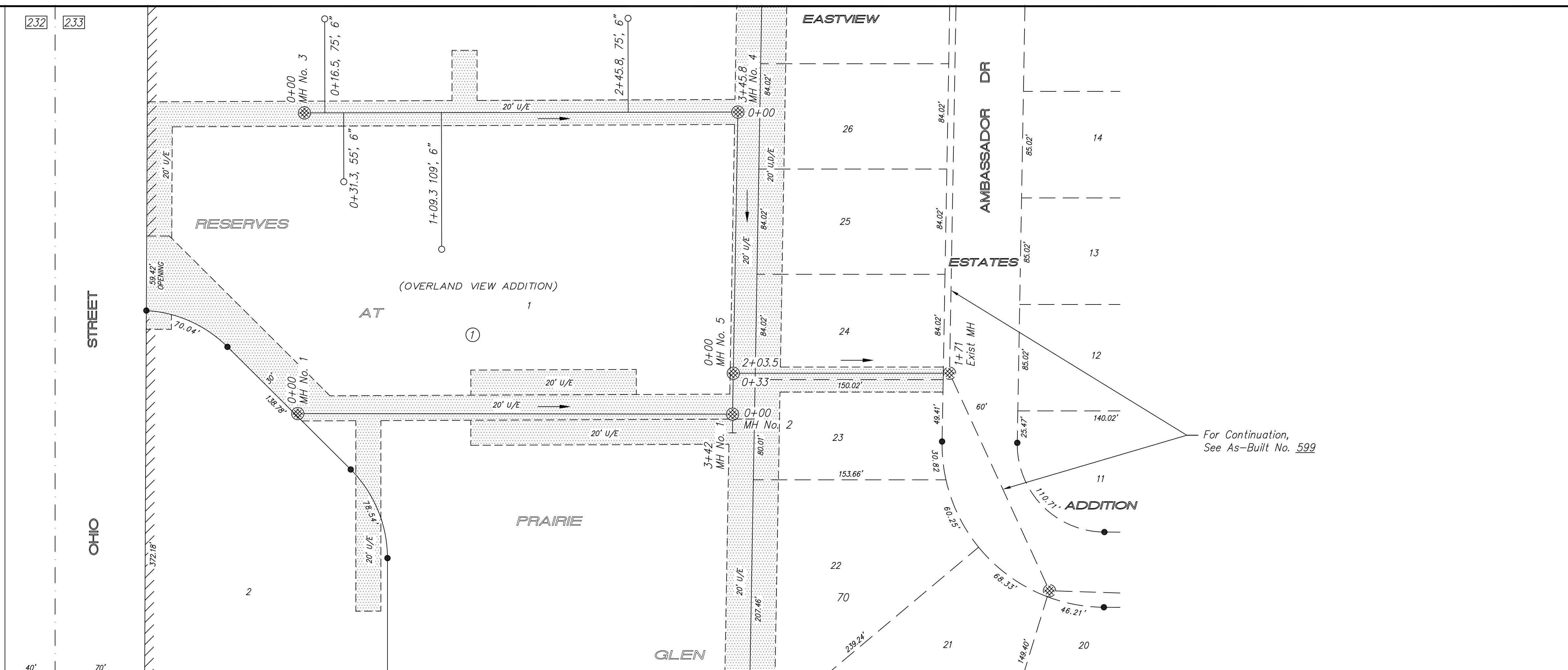


666

Reserves at Prairie Glen
(Overland View Addition)
July 2004

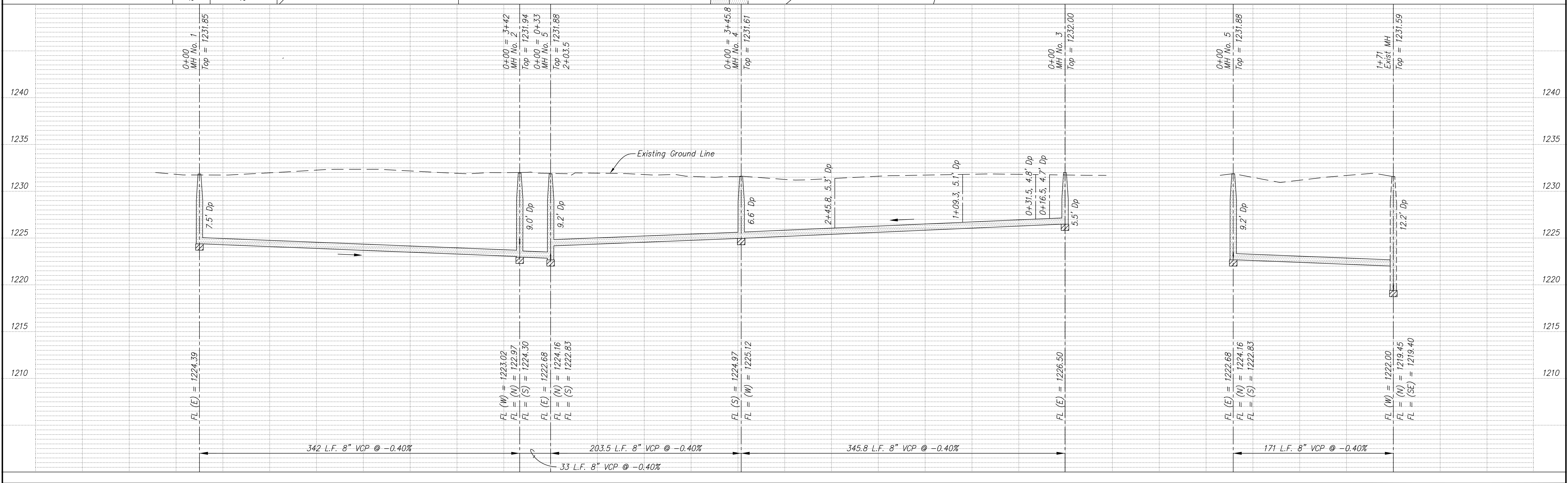


NOTE: All Sanitary Sewer mains are 8" unless noted otherwise.

BM No. 1: Bar w/2" aluminum cap stamped "Wilson & Co.", 20' W of SW cor subdivision
Elev = 1232.62

BM No. 2: 60d nail in first power pole N of SW corner Eastview Estates Addition
Elev = 1232.31

SCALE
 PLAN: 1" = 50'
 Horiz & Vert
 PROFILE: 1" = 50'
 Vert 1" = 5'



NO.	REVISIONS	DATE	BY

Sanitary Sewer As-Built Drawing

CONTRACTOR	DESIGN	CHECKED	CITY OF SALINA Dept. of Public Works Engineering Division 300 WEST ASH SALINA, KANSAS 67401 PH: 785.309.5725 FAX: 785.309.5713	DATE	PROJ. NO.
SCALE	DRAWN	APPROVED		July 2005	PRIVATE
As Shown			FILENAME	SHEET	OF
			666k.dwg		