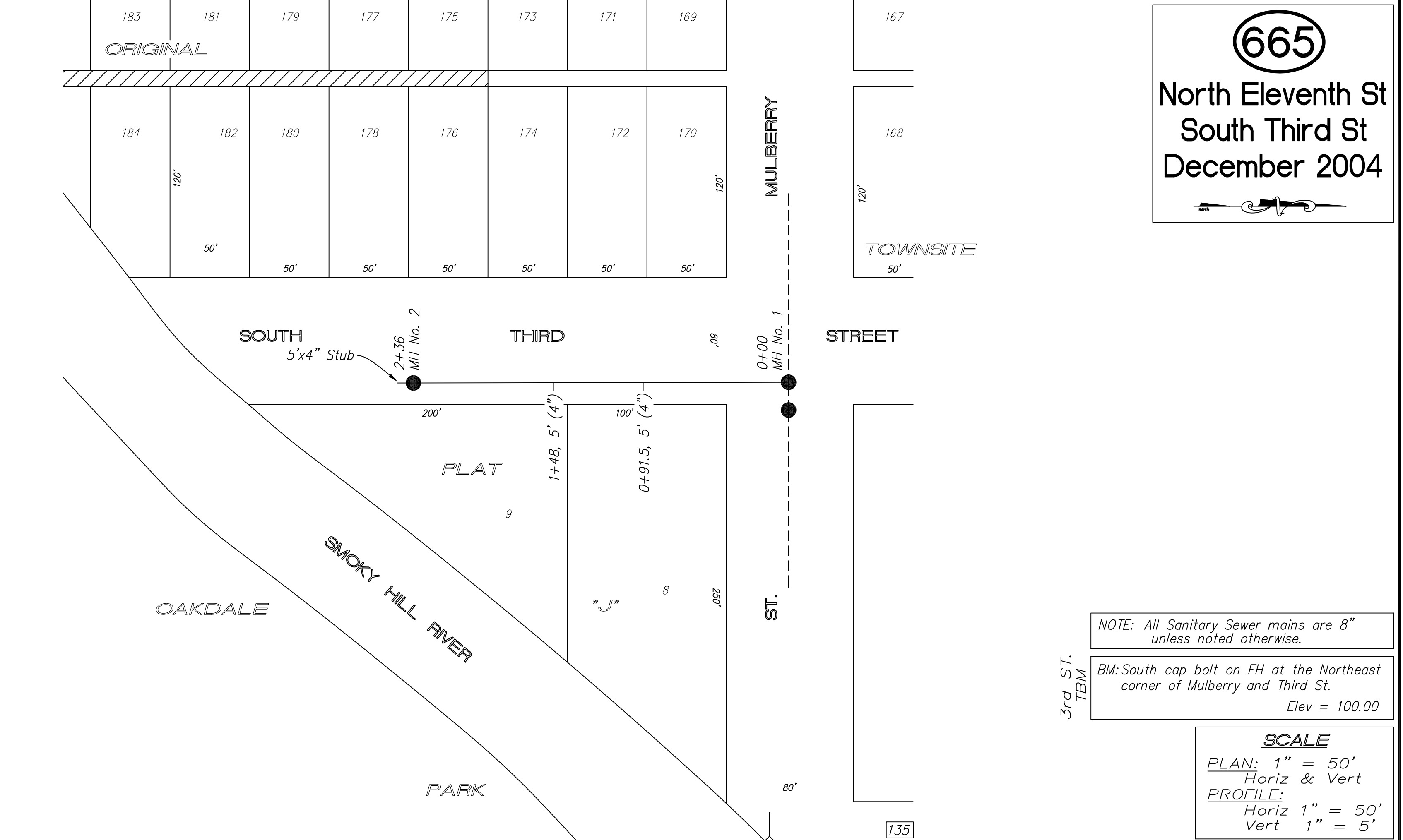
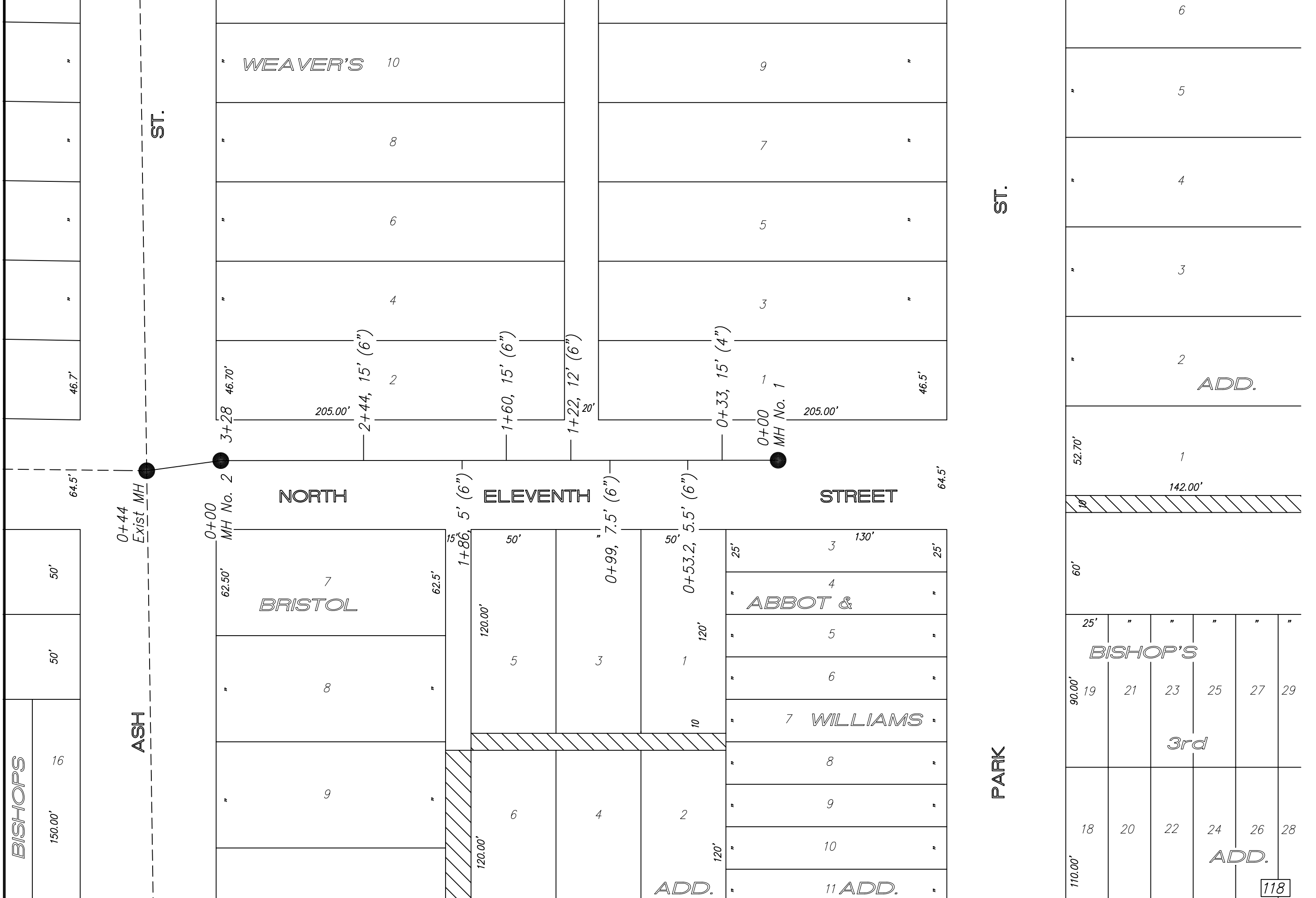
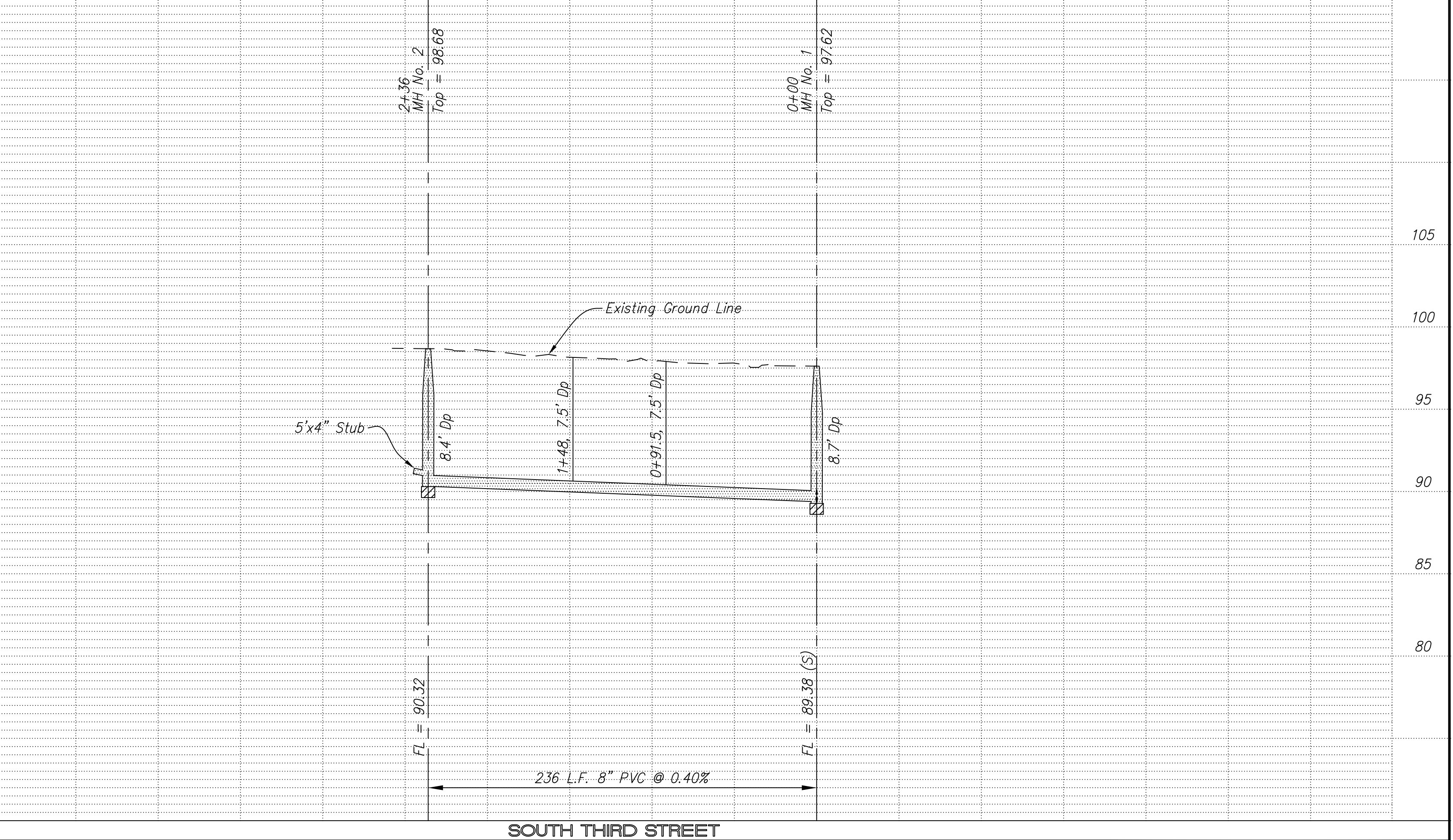


665
 North Eleventh St
 South Third St
 December 2004



NOTE: All Sanitary Sewer mains are 8" unless noted otherwise.
 BM: South cap bolt on FH at the Northeast corner of Mulberry and Third St.
 Elev = 100.00

SCALE
 PLAN: 1" = 50'
 Horiz & Vert
 PROFILE: 1" = 50'
 Horiz
 1" = 5'
 Vert



NO.	REVISIONS	DATE	BY

PROJECT TITLE				CONTRACTOR		DESIGN		CHECKED		CITY OF SALINA		DATE		PROJ. NO.	
Sanitary Sewer As-Built Drawing				Steven's Contractors						Dept. of Public Works		July 2005		03-1423	
				SCALE		DRAWN		APPROVED		Engineering Division		FILENAME		SHEET	
				As Shown						300 WEST ASH		665k.dwg			
										SALINA, KANSAS 67401					
										PH: 785.309.5725					
										FAX: 785.309.5713					