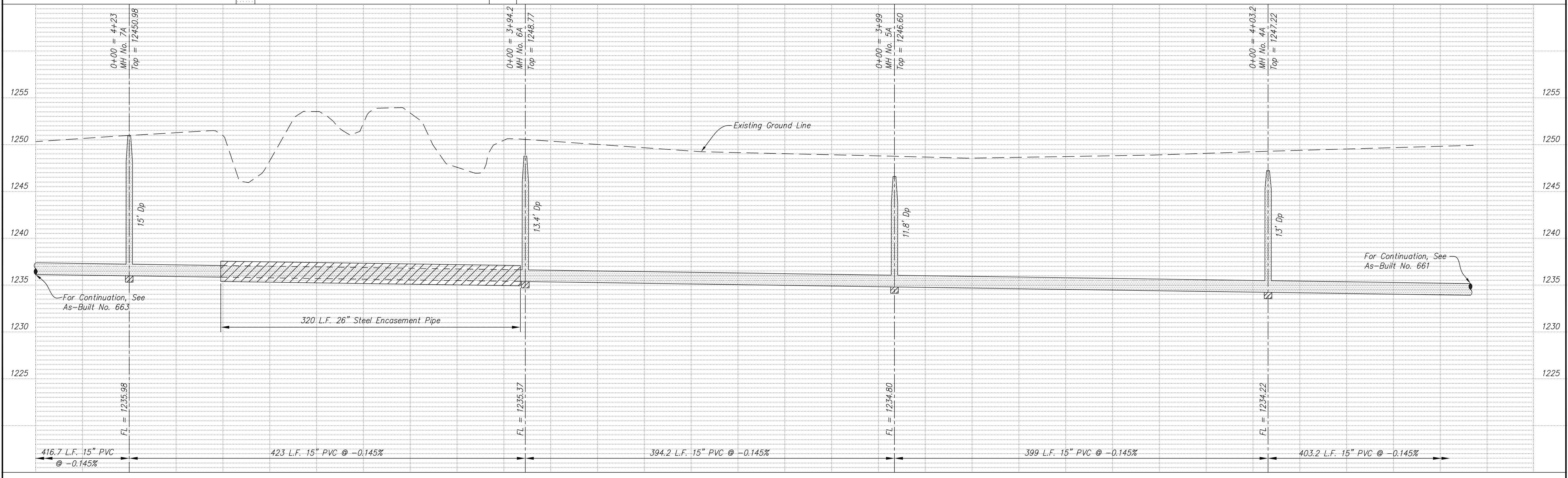


NOTE: All Sanitary Sewer mains are 15" unless noted otherwise.

BM No. 1: 5/8" bar @ the Northwest of gas riser on the West line of Bland Subdivision.  
Elev = 1245.19

BM No. 2: 60d nail in East side light pole 100'± East of the metal building at 332 East Schilling.  
Elev = 1247.04

**SCALE**  
 PLAN: 1" = 50'  
 Horiz & Vert  
 PROFILE: 1" = 50'  
 Vert 1" = 5'



NO.	REVISIONS	DATE	BY

PROJECT TITLE: **Sanitary Sewer As-Built Drawing**

CONTRACTOR: Steven's Contractors	DESIGN:	CHECKED:	<b>CITY OF SALINA</b> Dept. of Public Works Engineering Division 300 WEST ASH SALINA, KANSAS 67401 PH: 785.309.5725 FAX: 785.309.5713	DATE: June 2005	PROJ. NO.:
SCALE: As Shown	DRAWN:	APPROVED:		FILENAME: 662k.dwg	SHEET: