

660

BLAND SUBDIVISION
MAY 2004



NOTE: All Sanitary Sewer mains are 8" unless noted otherwise.

NOTE: Distance from back of curb to property line is based on the street being built in the center of the right-of-way.

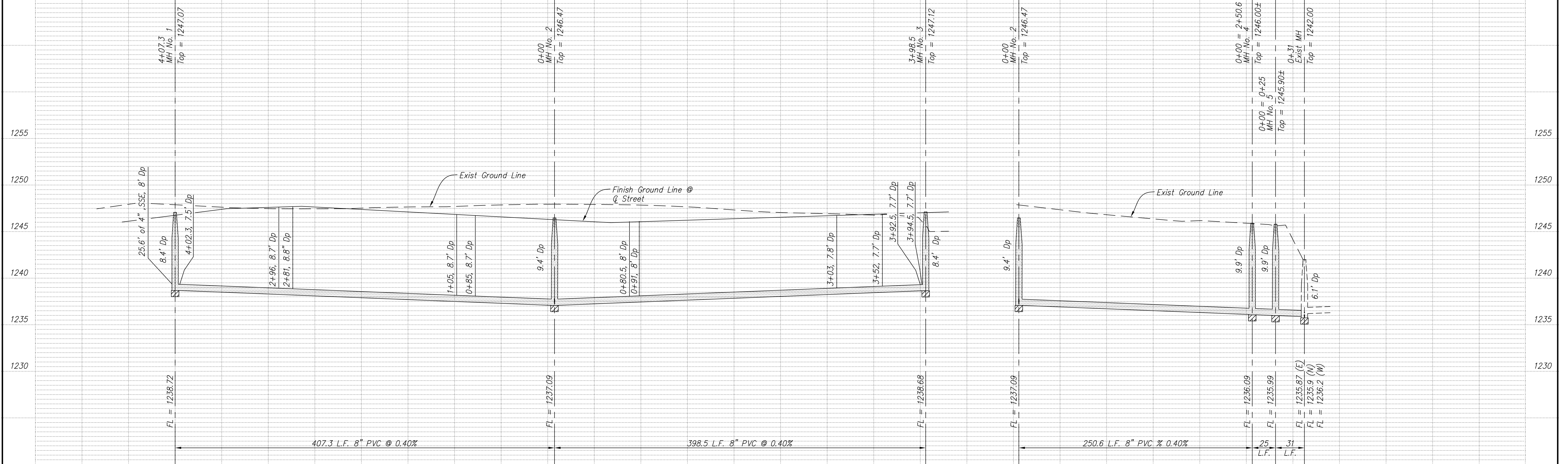
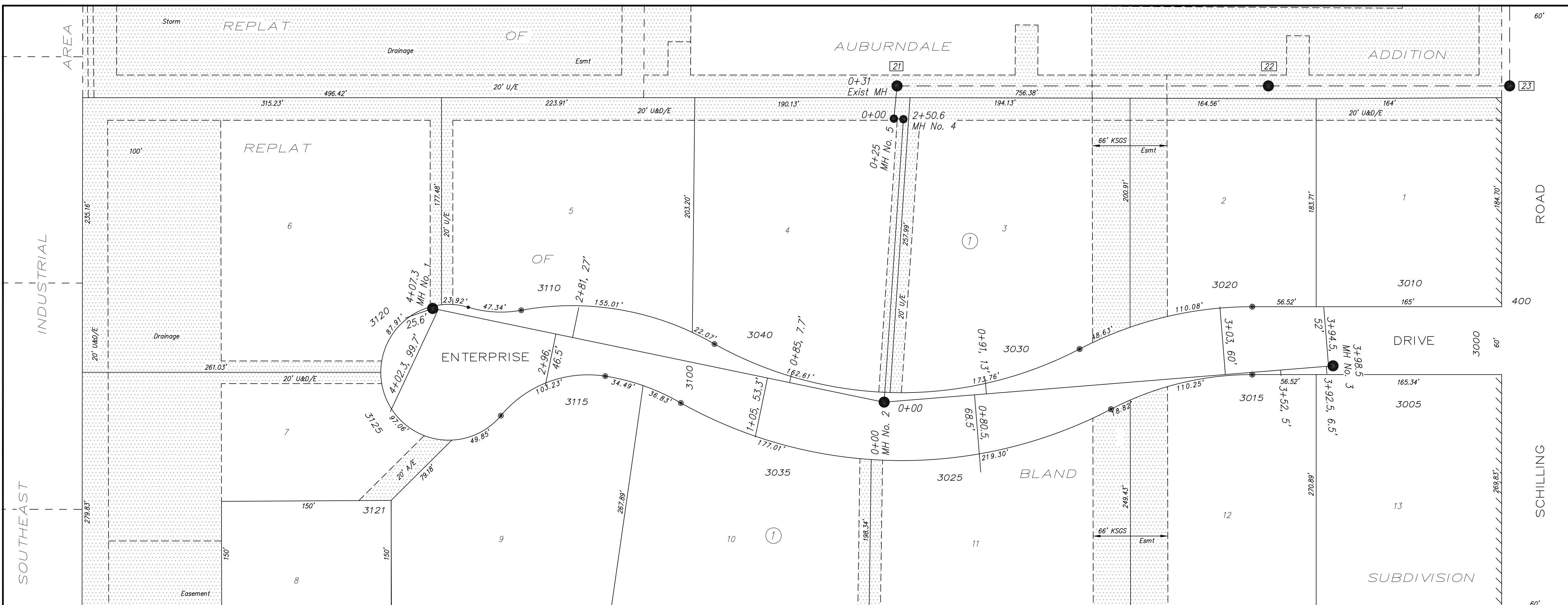
NOTE: All Streets are 33' back to back of curb. Right-of-Ways are 60' unless noted otherwise.

BM No. 1: 5/8" bar @ the Northwest of gas riser on the West line of Bland Subdivision.
Elev = 1245.19

BM No. 2: 60d nail in East side light pole 100'± East of the metal building at 332 East Schilling.
Elev = 1247.04

SCALE

PLAN: 1" = 50'
Horiz & Vert
PROFILE:
Horiz 1" = 50'
Vert 1" = 5'



NO.	REVISIONS	DATE	BY

PROJECT TITLE
Sanitary Sewer As-Built Drawing

CONTRACTOR Steven's Contractors	DESIGN	CHECKED	CITY OF SALINA Dept. of Public Works Engineering Division	DATE May 2005	PROJ. NO. -
SCALE As Shown	DRAWN	APPROVED		FILENAME 660k.dwg	SHEET OF

300 WEST ASH SALINA, KANSAS 67401
PH: 785.309.5725 FAX: 785.309.5713