

RIVERRUN

ADDITION

PHASE 2

STONERIDGE LN.

LATERAL "A"

LATERAL "B"

LATERAL "C"

LATERAL "D"

LATERAL "E"

LATERAL "F"

LATERAL "G"

LATERAL "H"

LATERAL "I"

LATERAL "J"

LATERAL "K"

LATERAL "L"

COMMON AREA

657

RIVERRUN ADDITION  
AUG 2003

USGS BM X-279 1947 RESET 1957  
Elev = 1293.27

TBM No. 1: Chiseled "C" set in NE corner of concrete base of traffic light at SW corner of E. Crawford and S. Marymount Rd.  
Elev = 1284.08

TBM No. 2: Chiseled "C" set at NW corner of curb inlet on E. side of Marymount Rd and N. side of Country Hills Rd  
Elev = 1259.70

TBM No. 3: Chiseled "C" set at top of curb at end radius on E. side of Marymount Rd and N. side of East Ridge Rd.  
Elev = 1248.59

TBM No. 4: Chiseled "C" set at SW corner of concrete curb inlet on E. side of Marymount Rd  
Elev = 1239.88

TBM No. 5: Chiseled "C" set at NW corner of curb inlet on E. side of Marymount Rd and N. side of Columbine Cr.  
Elev = 1250.56

TBM No. 6: Chiseled "C" found on top E end of 6" concrete drive entrance to 1418 S Marymount Rd  
Elev = 1260.71

TBM No. 7: 1/2" bar at the SE corner of Section 19-14-2  
Elev = 1250.08

NOTE: All services are at 8" to 10" deep (at end of stub-out)

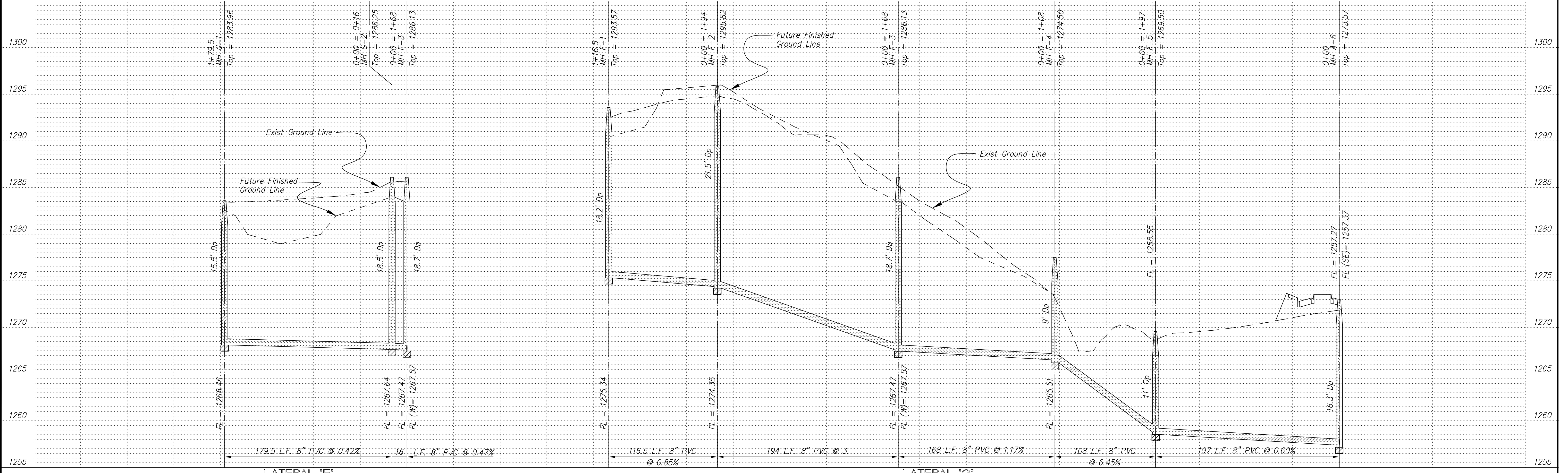
NOTE: All Sanitary Sewer mains are 8" unless noted otherwise.

NOTE: Distance from back of curb to property line is based on the street being built in the center of the right-of-way.

NOTE: All Streets are 33' back to back of curb. Right-of-Ways are 60' unless noted otherwise.

SCALE

PLAN: 1" = 50'  
Horiz & Vert  
PROFILE: 1" = 50'  
Horiz  
1" = 5'  
Vert



NO.	REVISIONS	DATE	BY

PROJECT TITLE  
**Sanitary Sewer As-Built Drawing**

CONTRACTOR  
SMOKY HILL, INC

SCALE  
As Shown

DESIGN  
CHECKED  
APPROVED

CITY OF SALINA  
Dept. of Public Works  
Engineering Division

DATE  
Sept 2004

PROJ. NO.  
03-1405

FILENAME  
657K.dwg

SHEET  
OF