

656

RIVERRUN ADDITION
AUG 2003

USGS BM X-279 1947 RESET 1957
 Elev = 1293.27

TBM No. 1: Chiseled "□" set in NE corner of concrete base of traffic light at SW corner of E. Crawford and S. Marymount Rd.
 Elev = 1284.08

TBM No. 2: Chiseled "□" set at NW corner of curb inlet on E. side of Marymount Rd and N. side of Country Hills Rd Marymount Rd.
 Elev = 1259.70

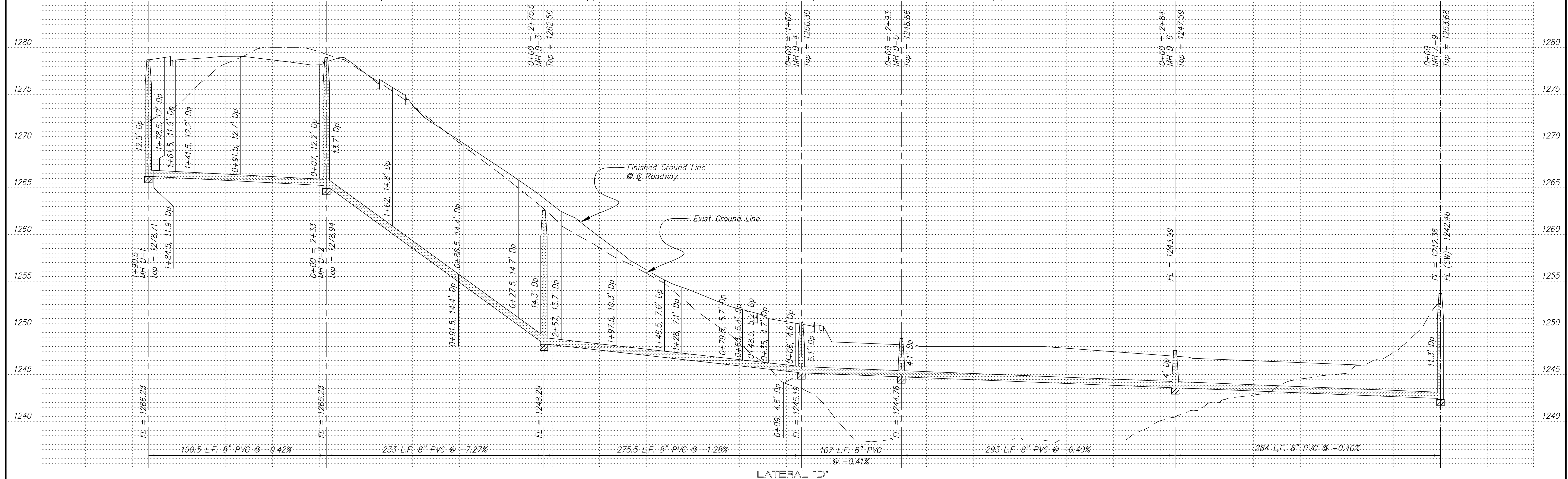
TBM No. 3: Chiseled "□" set at top of curb at end radius on E. side of Marymount Rd and N. side of East Ridge Rd.
 Elev = 1248.59

TBM No. 4: Chiseled "□" set at SW corner of concrete curb inlet on E. side of Marymount Rd
 Elev = 1239.88

TBM No. 5: Chiseled "□" set at NW corner of curb inlet on E. side of Marymount Rd and N. side of Columbine Cr.
 Elev = 1250.56

TBM No. 6: Chiseled "□" found on top E end of 6" concrete drive entrance to 1418 S Marymount Rd
 Elev = 1260.71

TBM No. 7: 1/2" bar at the SE corner of Section 19-14-2
 Elev = 1250.08



NO.	REVISIONS	DATE	BY	NO.	REVISIONS	DATE	BY

PROJECT TITLE
Sanitary Sewer As-Built Drawing

CONTRACTOR SMOKY HILL, INC	DESIGN	CHECKED	CITY OF SALINA Dept. of Public Works Engineering Division	DATE Sept 2004	PROJ. NO. 03-1405
SCALE As Shown	DRAWN	APPROVED		FILENAME 656K.dwg	SHEET OF