

655

RIVERRUN ADDITION
AUG 2003

USGS BM X-279 1947 RESET 1957
Elev = 1293.27

TBM No. 1: Chiseled "U" set in NE corner of concrete base of traffic light at SW corner of E. Crawford and S. Marymount Rd.
Elev = 1284.08

TBM No. 2: Chiseled "U" set at NW corner of curb inlet on E. side of Marymount Rd and N. side of Country Hills Rd Marymount Rd.
Elev = 1259.70

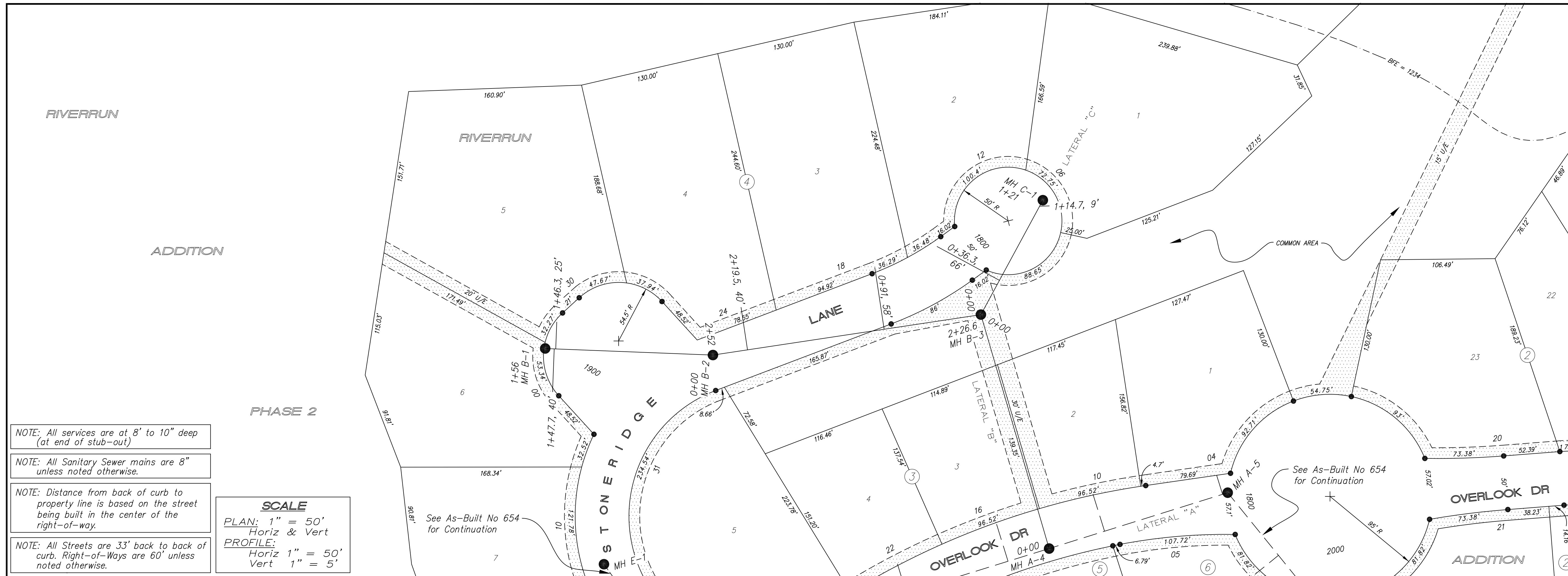
TBM No. 3: Chiseled "U" set at top of curb at end radius on E. side of Marymount Rd and N. side of East Ridge Rd.
Elev = 1248.59

TBM No. 4: Chiseled "U" set at SW corner of concrete curb inlet on E. side of Marymount Rd
Elev = 1239.88

TBM No. 5: Chiseled "U" set at NW corner of curb inlet on E. side of Marymount Rd and N. side of Columbine Cr.
Elev = 1250.56

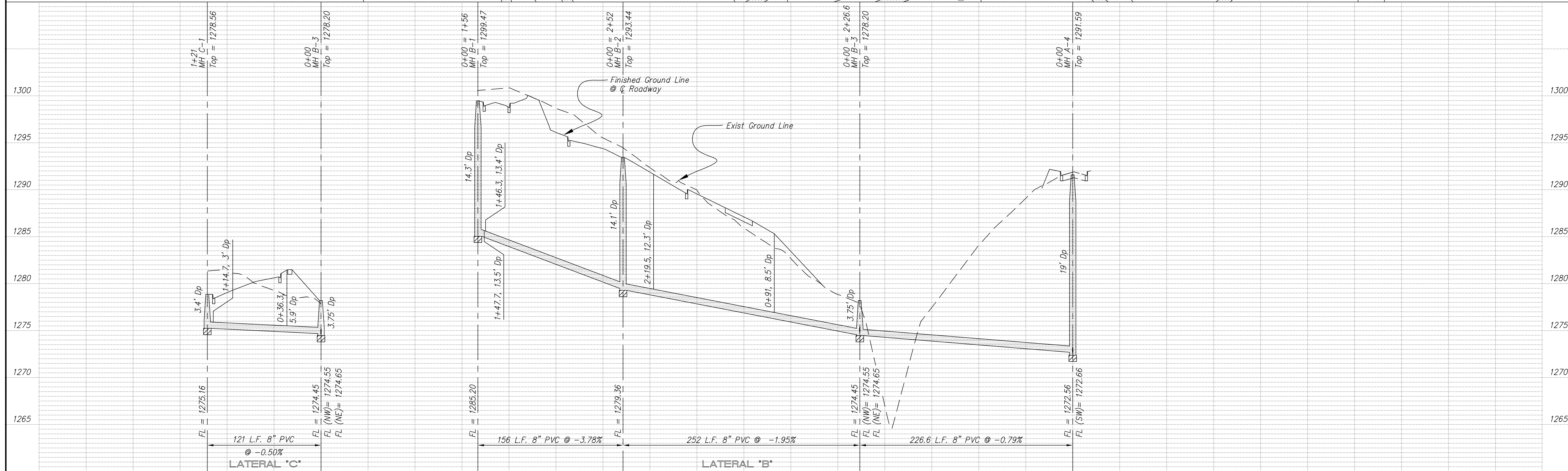
TBM No. 6: Chiseled "U" found on top E end of 6" concrete drive entrance to 1418 S Marymount Rd
Elev = 1260.71

TBM No. 7: 1/2" bar at the SE corner of Section 19-14-2
Elev = 1250.08



- NOTE: All services are at 8" to 10" deep (at end of stub-out)
- NOTE: All Sanitary Sewer mains are 8" unless noted otherwise.
- NOTE: Distance from back of curb to property line is based on the street being built in the center of the right-of-way.
- NOTE: All Streets are 33' back to back of curb. Right-of-Ways are 60' unless noted otherwise.

SCALE
 PLAN: 1" = 50'
 Horiz & Vert
 PROFILE: 1" = 50'
 Vert 1" = 5'



NO.	DATE	REVISIONS	DATE	BY	NO.	REVISIONS	DATE	BY

PROJECT TITLE
Sanitary Sewer As-Built Drawing

CONTRACTOR SMOKY HILL, INC	DESIGN	CHECKED	CITY OF SALINA Dept. of Public Works Engineering Division	DATE Sept 2004	PROJ. NO. 03-1405
SCALE As Shown	DRAWN	APPROVED		FILENAME 655K.dwg	SHEET OF