

RIVERRUN

RIVERRUN

654

RIVERRUN ADDITION  
AUG 2003

USGS BM X-279 1947 RESET 1957  
Elev = 1293.27

TBM No. 1: Chiseled "U" set in NE corner of concrete base of traffic light at SW corner of E. Crawford and S. Marymount Rd.  
Elev = 1284.08

TBM No. 2: Chiseled "U" set at NW corner of curb inlet on E. side of Marymount Rd and N. side of Country Hills Rd Marymount Rd.  
Elev = 1259.70

TBM No. 3: Chiseled "U" set at top of curb at end radius on E. side of Marymount Rd and N. side of East Ridge Rd.  
Elev = 1248.59

TBM No. 4: Chiseled "U" set at SW corner of concrete curb inlet on E. side of Marymount Rd  
Elev = 1239.88

TBM No. 5: Chiseled "U" set at NW corner of curb inlet on E. side of Marymount Rd and N. side of Columbine Cr.  
Elev = 1250.56

TBM No. 6: Chiseled "U" found on top E end of 6" concrete drive entrance to 1418 S Marymount Rd  
Elev = 1260.71

TBM No. 7: 1/2" bar at the SE corner of Section 19-14-2  
Elev = 1250.08

ADDITION

PHASE II

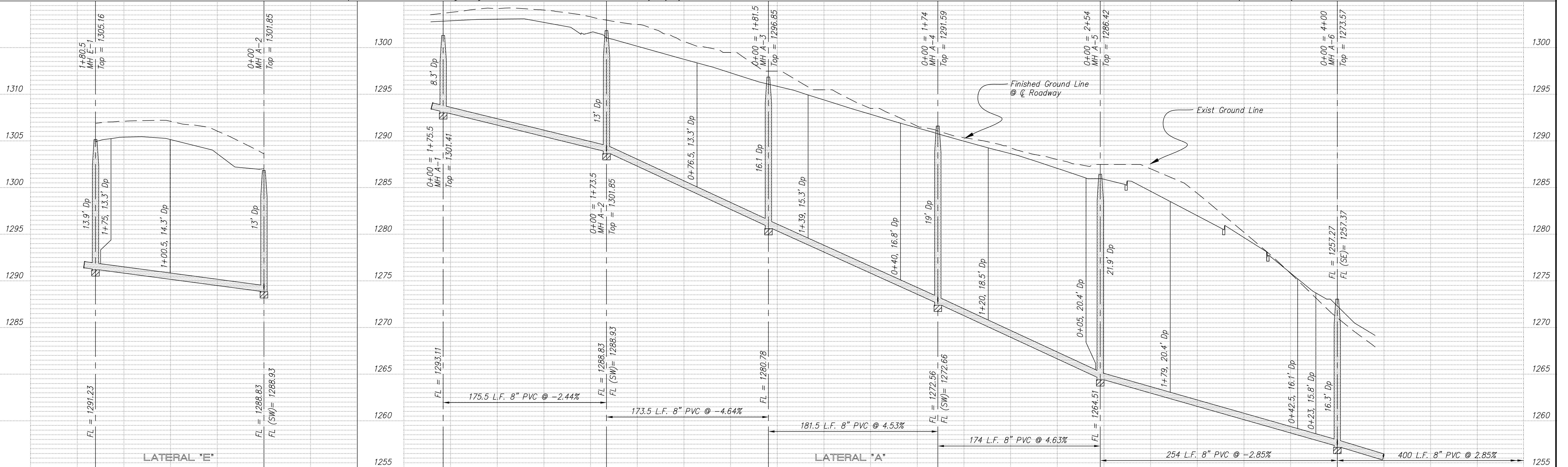
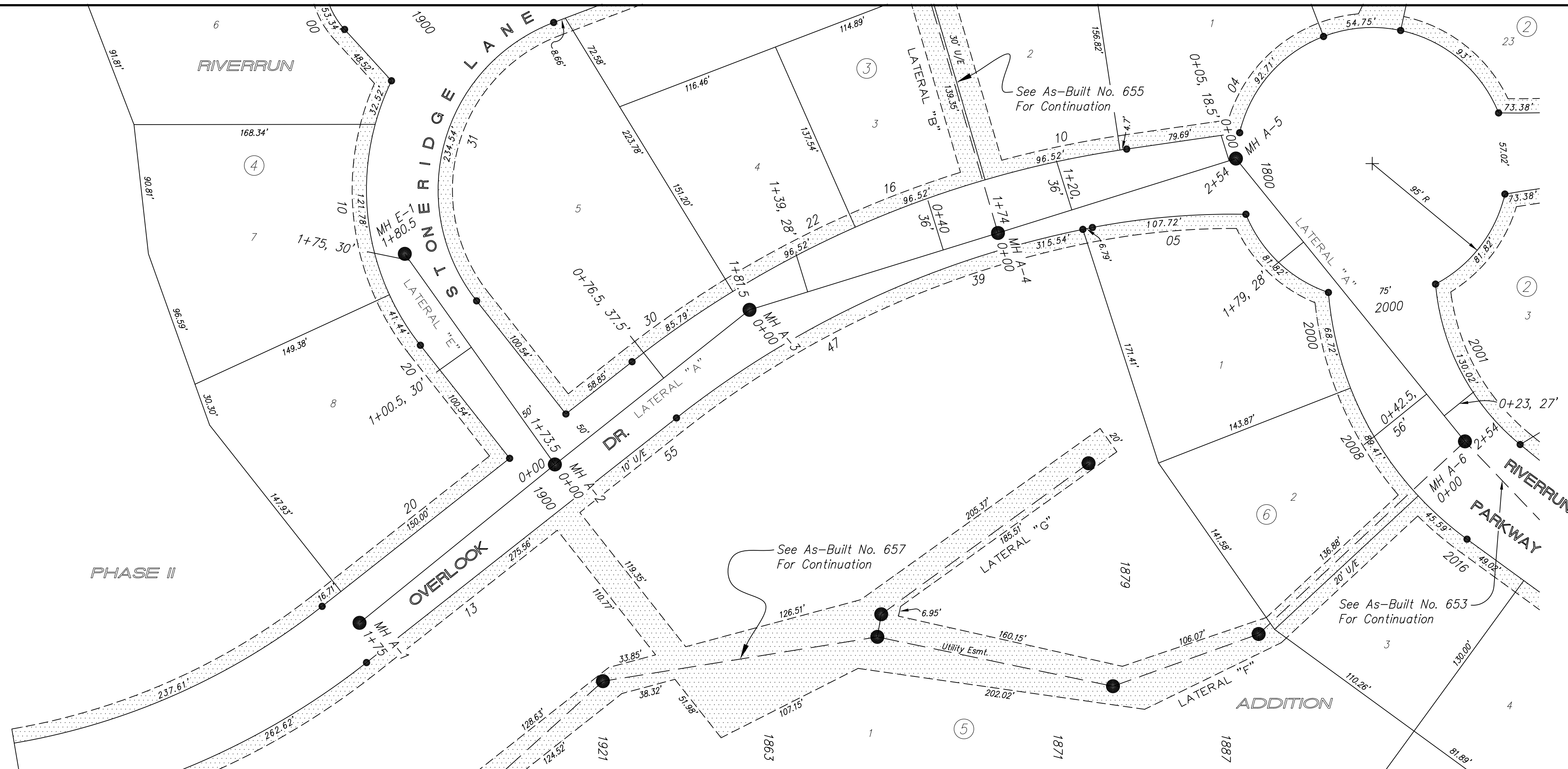
NOTE: All services are at 8" to 10" deep (at end of stub-out)

NOTE: All Sanitary Sewer mains are 8" unless noted otherwise.

NOTE: Distance from back of curb to property line is based on the street being built in the center of the right-of-way.

NOTE: All Streets are 33' back to back of curb. Right-of-Ways are 60' unless noted otherwise.

SCALE  
PLAN: 1" = 50'  
Horiz & Vert  
PROFILE:  
Horiz 1" = 50'  
Vert 1" = 5'



NO.	REVISIONS	DATE	BY	NO.	REVISIONS	DATE	BY

PROJECT TITLE  
**Sanitary Sewer As-Built Drawing**

CONTRACTOR  
SMOKY HILL, INC  
SCALE  
As Shown

DESIGN:      CHECKED:  
DRAWN:      APPROVED:  
CITY OF SALINA  
Dept. of Public Works  
Engineering Division  
300 WEST ASH SALINA, KANSAS 67401  
PH: 785.309.5725 FAX: 785.309.5713  
DATE: Aug 2004  
FILENAME: 654K.dwg  
PROJ. NO: 03-1405  
SHEET: OF