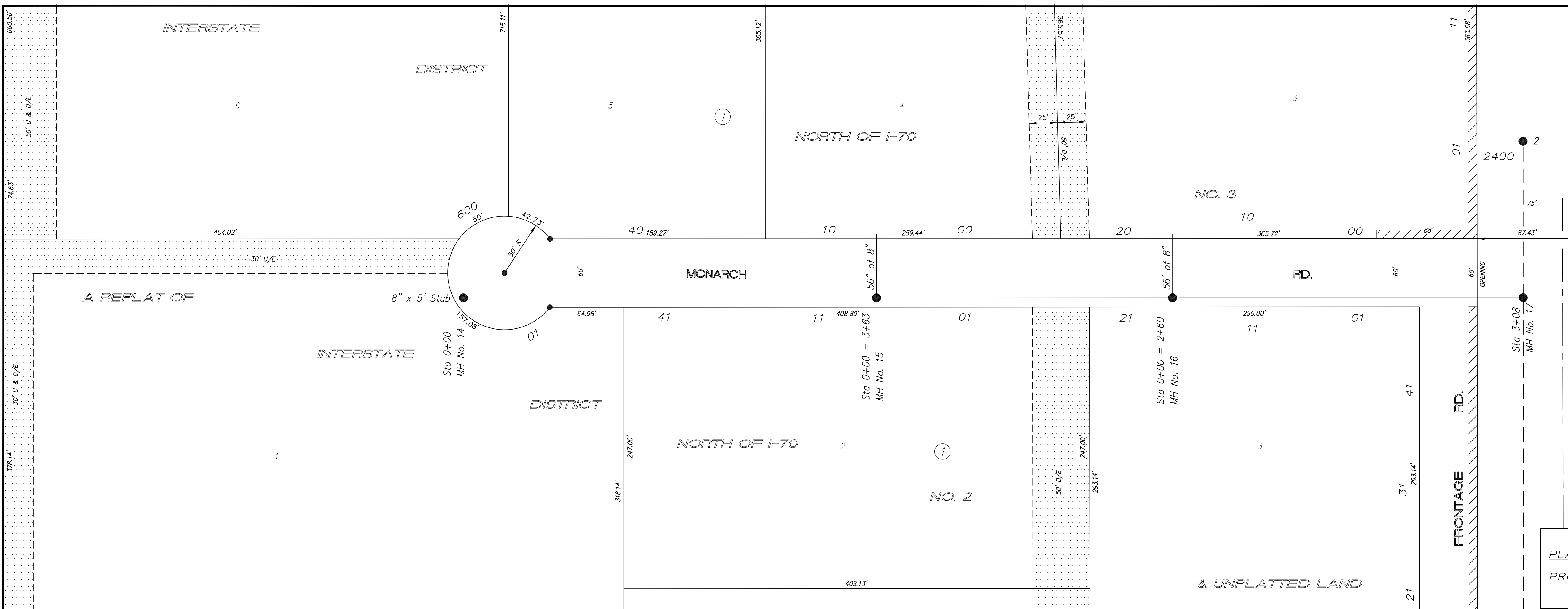


652

REPLAT of INTERSTATE DISTRICT NORTH of I-70 No. 2 and UNPLATTED LAND and INTERSTATE DISTRICT NORTH of I-70 No. 3 May 2000



TBM No. 1: Railroad spike in power pole 72.3' East of the NE corner of Lot 1, Block 2, Interstate District North of I-70 No. 2 to Salina, Kansas. Elev = 1218.24

USGS BM L-167: Disk in Southwest corner of concrete headwall steel bridge over Smokey Hill over the Salina River. Elev = 1218.31

NOTE: All Sanitary Sewer mains are 8" unless noted otherwise.

NOTE: Distance from back of curb to property line is based on the street being built in the center of the right-of-way.

NOTE: All Streets are 33' back to back of curb. Right-of-Ways are 60' unless noted otherwise.

SCALE
PLAN: 1" = 50'
Horiz & Vert
PROFILE:
Horiz 1" = 50'
Vert 1" = 5'

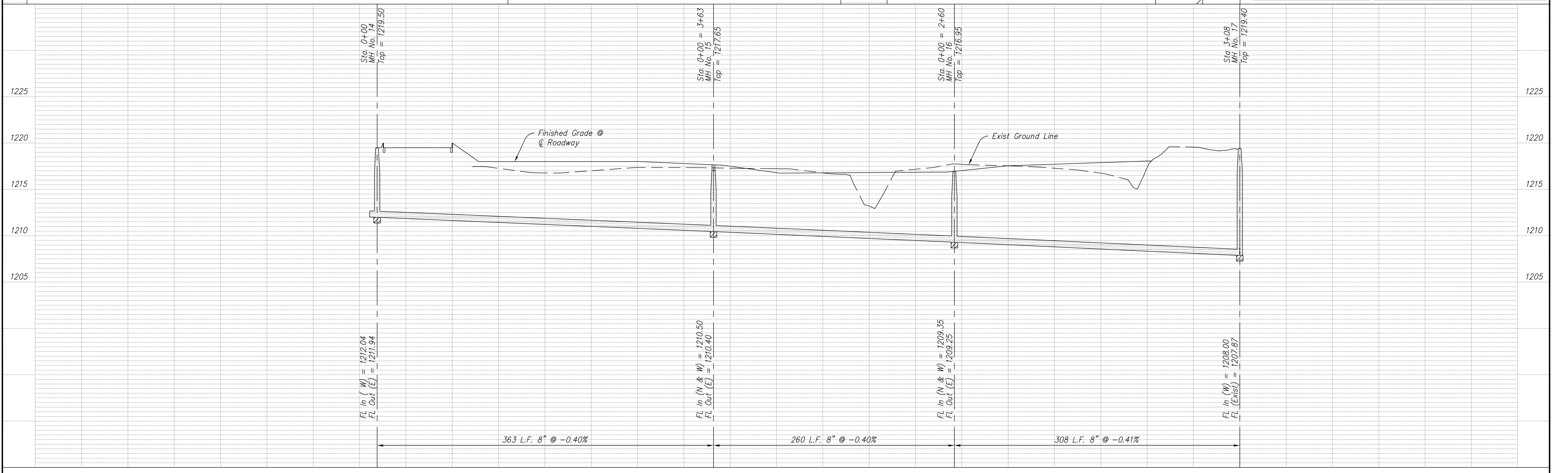


Table with columns for NO., REVISIONS, DATE, BY.

PROJECT TITLE: Sanitary Sewer As-Built Drawing

CONTRACTOR: STEVENS CONT, INC
SCALE: As Shown
DESIGN: DRAWN:
CHECKED: APPROVED:

CITY OF SALINA
Dept. of Public Works
Engineering Division
300 WEST ASH SALINA, KANSAS 67401
PH: 785.309.5725 FAX: 785.309.5713
DATE: May 2004
FILENAME: 652k.dwg
PROJ. NO.: Private
SHEET: OF: