

648

EASTVIEW ESTATES ADDITION - PHASE 4

April 2003

See Interceptor Sewer Plans, Proj. No. 91-848

SCALE
PLAN: 1" = 50'
Horiz & Vert
PROFILE: 1" = 50'
Vert 1" = 5'

NOTE: All Sanitary Sewer services are 8' below existing ground surface.

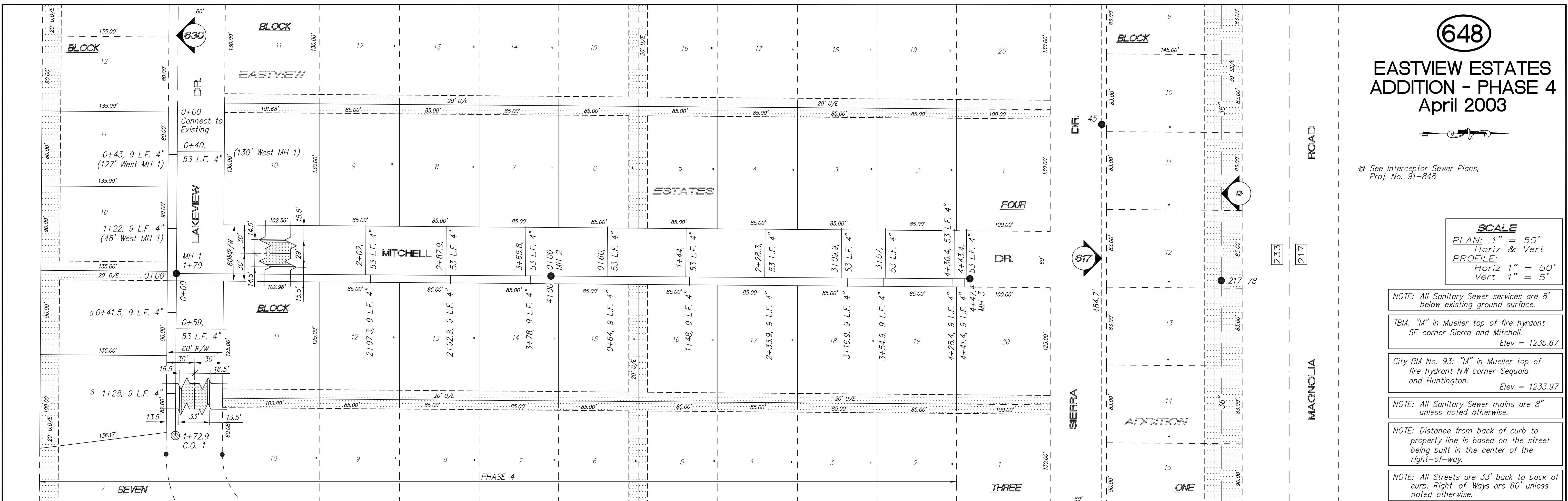
TBM: "M" in Mueller top of fire hydrant SE corner Sierra and Mitchell. Elev = 1235.67

City BM No. 93: "M" in Mueller top of fire hydrant NW corner Sequoia and Huntington. Elev = 1233.97

NOTE: All Sanitary Sewer mains are 8" unless noted otherwise.

NOTE: Distance from back of curb to property line is based on the street being built in the center of the right-of-way.

NOTE: All Streets are 33' back to back of curb. Right-of-Ways are 60' unless noted otherwise.



NO.	REVISIONS	DATE	BY

PROJECT TITLE
Sanitary Sewer As-Built Drawing

CONTRACTOR
STEVENS CONT, INC

SCALE
As Shown

DESIGN
CHECKED
APPROVED

CITY OF SALINA
ENGINEERING DEPARTMENT
300 WEST ASH
SALINA, KANSAS 67401
PH: 785.309.5725 FAX: 785.309.5713

DATE
Apr 2003

FILENAME
648.dwg

PROJ NO:
PRIVATE

SHEET: OF