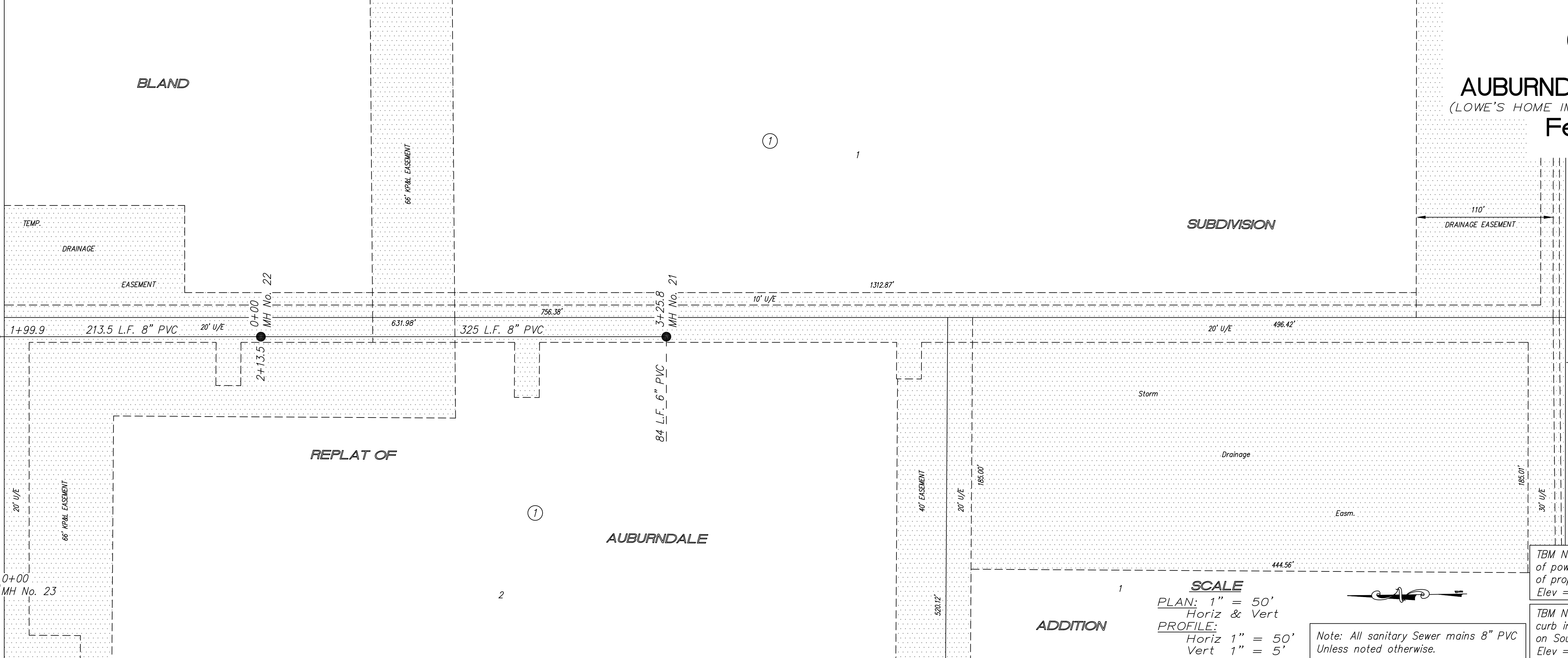


644

AUBURDALE ADDITION
(LOWE'S HOME IMPROVEMENT WAREHOUSE)
Feb 2002

SOUTH
INDUSTRIAL
AREA

ROAD
SCHILLING



SCALE
PLAN: 1" = 50'
Horiz & Vert
PROFILE: 1" = 50'
Vert 1" = 5'

Note: All sanitary Sewer mains 8" PVC
Unless noted otherwise.

TBM No. 1: Railroad spike in north face of power pole, 30± north of NE corner of property. Elev = 1246.75
TBM No. 2: Chiseled "0" on SE corner of curb inlet, 1st curb inlet east of 9th St on South side of Schilling Rd. Elev = 1247.11

Continued from As-Built No. 643



NO.	REVISIONS	DATE	BY

PROJECT TITLE
Sanitary Sewer As-Built Drawing

CONTRACTOR: Stevens Contractors
SCALE: As Shown
DESIGN: Ozark Eng.
DRAWN: [Blank]
CHECKED: [Blank]
APPROVED: [Blank]

CITY OF SALINA
ENGINEERING DEPARTMENT
300 WEST ASH SALINA, KANSAS 67401
PH: 785.309.5725 FAX: 785.309.5713
DATE: Dec 2002
FILENAME: 644.dwg
PROJ. NO.: [Blank]
SHEET: 644 OF: [Blank]