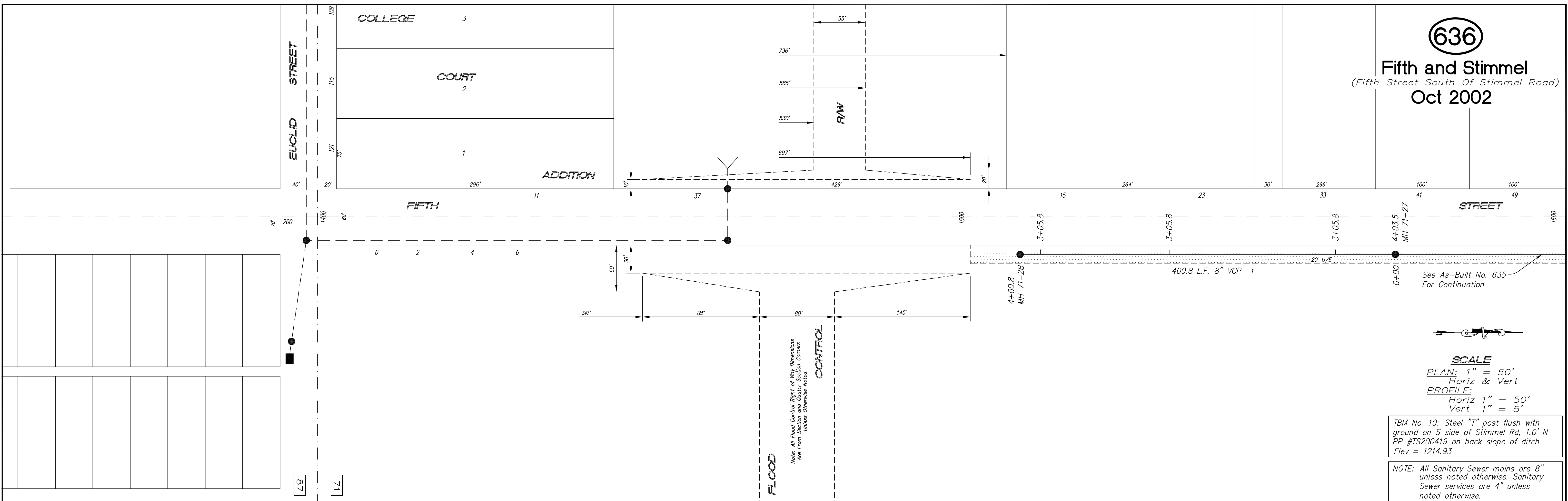


636

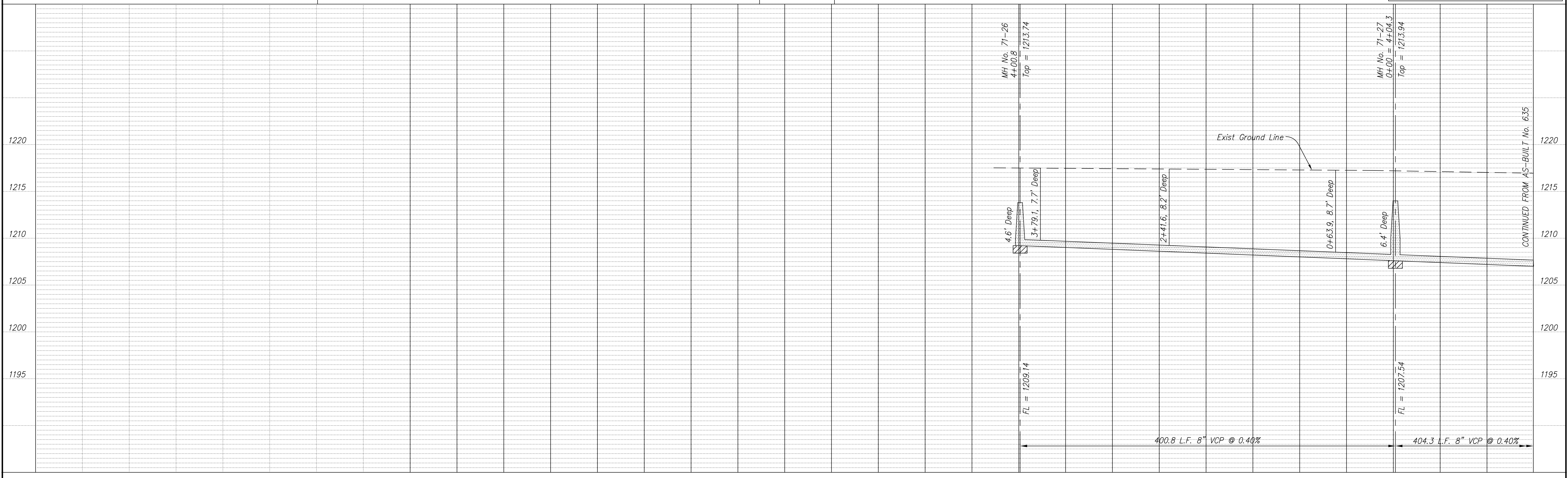
Fifth and Stimmel
(Fifth Street South Of Stimmel Road)
Oct 2002



SCALE
 PLAN: 1" = 50'
 Horiz & Vert
 PROFILE: Horiz 1" = 50'
 Vert 1" = 5'

TBM No. 10: Steel "T" post flush with ground on S side of Stimmel Rd, 1.0' N
 PP #TS200419 on back slope of ditch
 Elev = 1214.93

NOTE: All Sanitary Sewer mains are 8" unless noted otherwise. Sanitary Sewer services are 4" unless noted otherwise.



NO.	REVISIONS	DATE	BY

PROJECT TITLE:
Sanitary Sewer As-Built Drawing

CONTRACTOR: Steven's Cont. Inc	DESIGN: Wilson & Co.	CHECKED:	CITY OF SALINA ENGINEERING DEPARTMENT 300 WEST ASH SALINA, KANSAS 67401 PH: 785.309.5725 FAX: 785.309.5713	DATE: April 2002	PROJ. NO.: 00-1265
SCALE: As Shown	DRAWN:	APPROVED:		FILENAME: 636.dwg	SHEET: 636