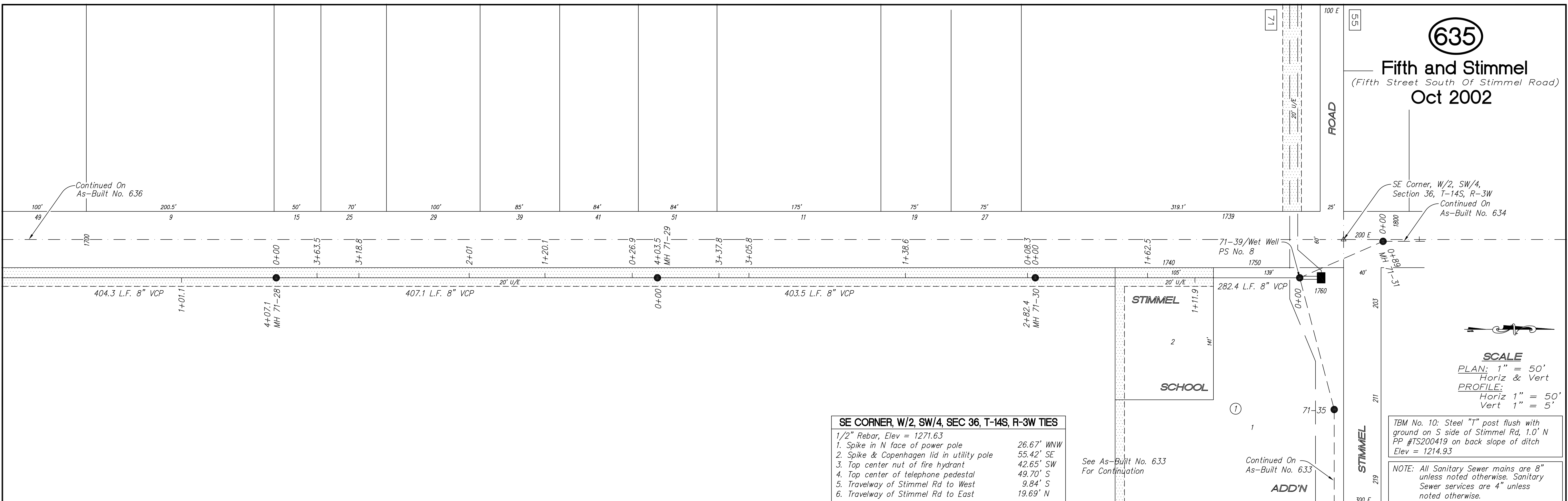


635

Fifth and Stimmel
(Fifth Street South Of Stimmel Road)
Oct 2002

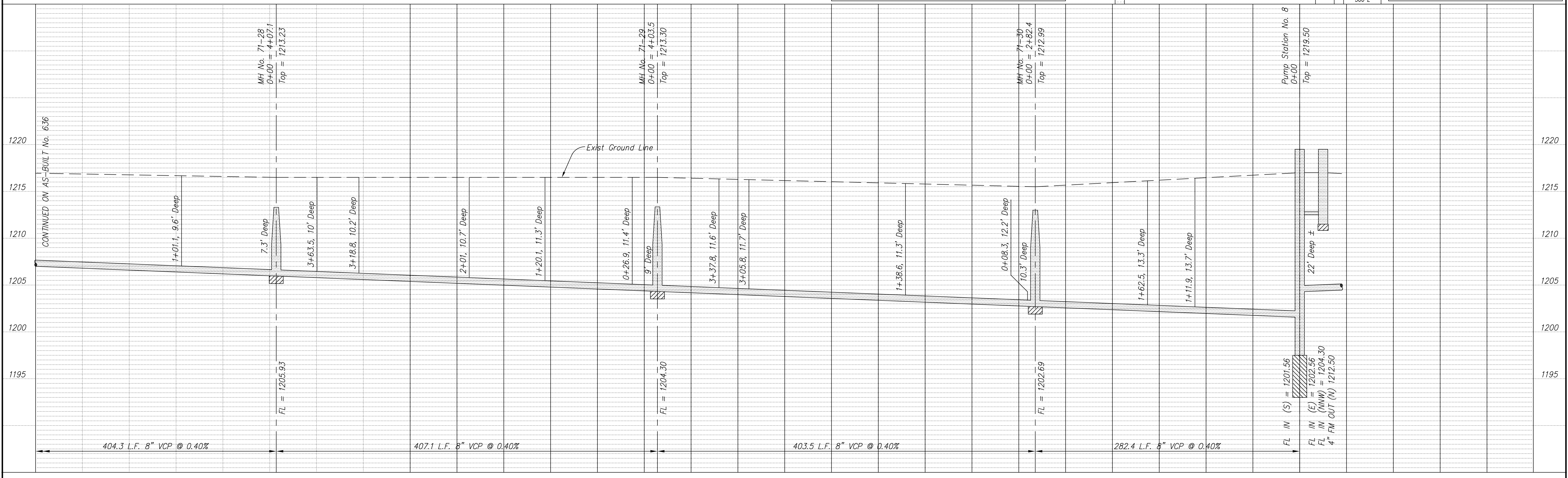


SE CORNER, W/2, SW/4, SEC 36, T-14S, R-3W TIES

1/2" Rebar, Elev = 1271.63

- Spike in N face of power pole 26.67' WNW
- Spike & Copenhagen lid in utility pole 55.42' SE
- Top center nut of fire hydrant 42.65' SW
- Top center of telephone pedestal 49.70' S
- Travelway of Stimmel Rd to West 9.84' S
- Travelway of Stimmel Rd to East 19.69' N

See As-Built No. 633 For Continuation



NO.	REVISIONS	DATE	BY

PROJECT TITLE

Sanitary Sewer As-Built Drawing

CONTRACTOR: Steven's Cont. Inc.
DESIGN: Wilson & Co.
SCALE: As Shown

CHECKED: []
APPROVED: []

CITY OF SALINA
ENGINEERING DEPARTMENT
300 WEST ASH SALINA, KANSAS 67401
PH: 785.309.5725 FAX: 785.309.5713

DATE: April 2002
FILENAME: 635.dwg
PROJ. NO.: 00-1265
SHEET: 635 OF: 635