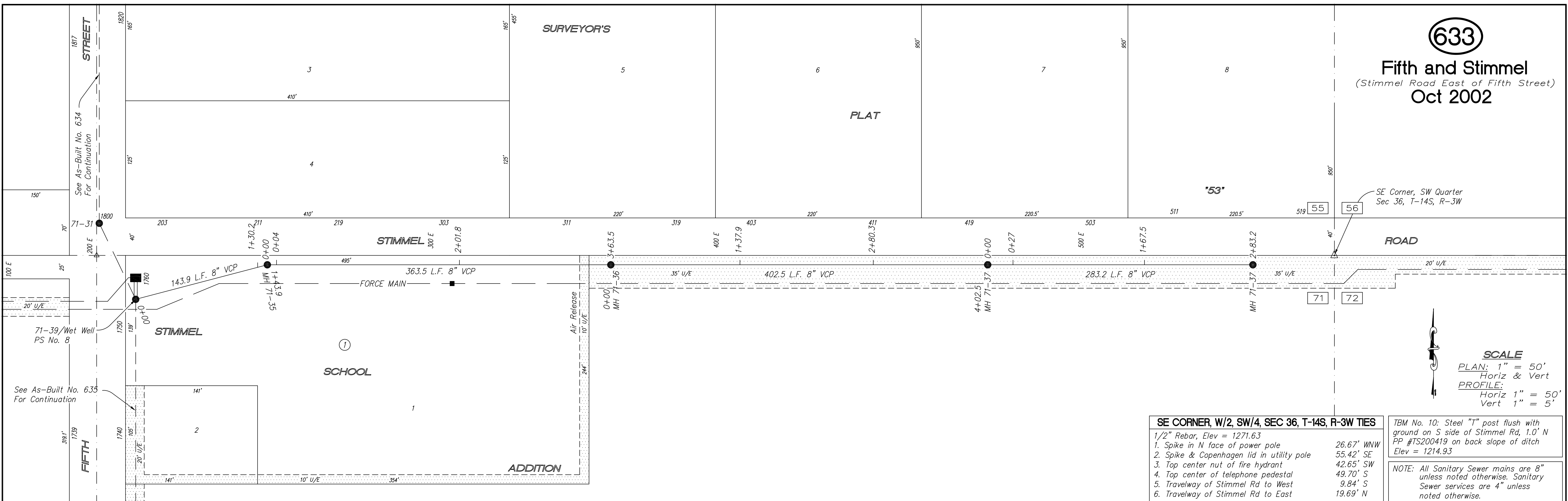


633

Fifth and Stimmel
(Stimmel Road East of Fifth Street)
Oct 2002

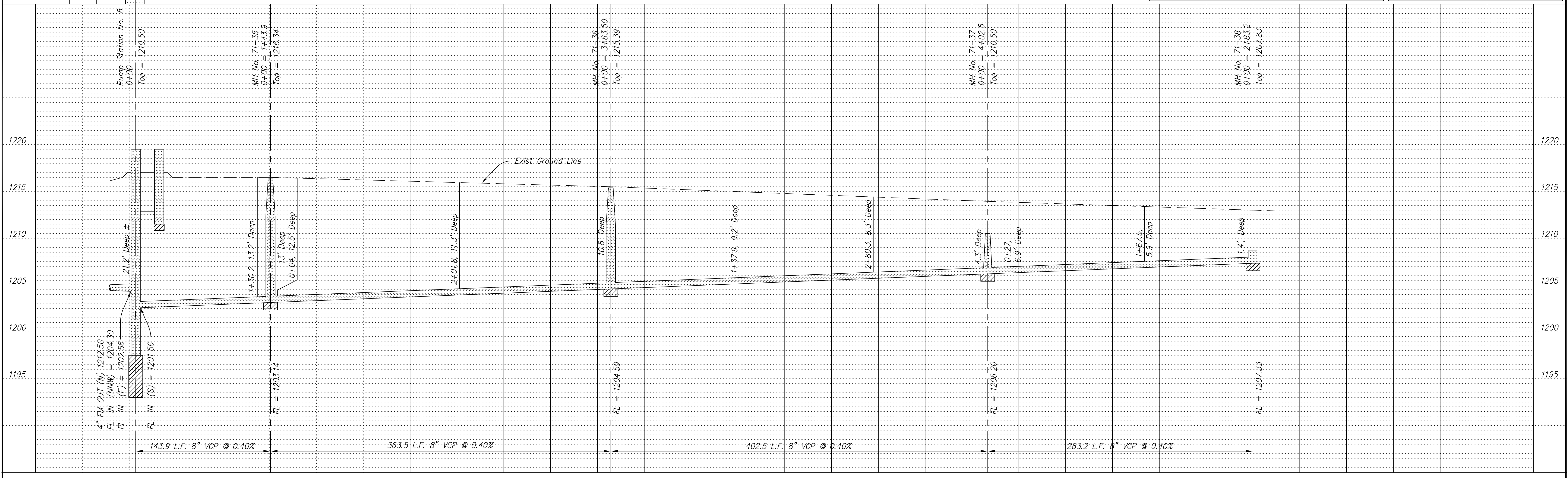


SE CORNER, W/2, SW/4, SEC 36, T-14S, R-3W TIES

1/2" Rebar, Elev = 1271.63	26.67' WNW
1. Spike in N face of power pole	55.42' SE
2. Spike & Copenhagen lid in utility pole	42.65' SW
3. Top center nut of fire hydrant	49.70' S
4. Top center of telephone pedestal	9.84' S
5. Travelway of Stimmel Rd to West	19.69' N
6. Travelway of Stimmel Rd to East	

TBM No. 10: Steel "T" post flush with ground on S side of Stimmel Rd, 1.0' N
PP #TS200419 on back slope of ditch
Elev = 1214.93

NOTE: All Sanitary Sewer mains are 8" unless noted otherwise. Sanitary Sewer services are 4" unless noted otherwise.



PROJECT TITLE						CONTRACTOR		DESIGN		CHECKED		CITY OF SALINA		DATE		PROJ. NO.	
Sanitary Sewer As-Built Drawing						Stevens Cont. Inc		Wilson & Co.				ENGINEERING DEPARTMENT		April 2002		00-1265	
						SCALE		DRAWN		APPROVED		FILENAME		SHEET		OF	
						As Shown						633.dwg		633			