

632

Holiday Addition
Sept 2000

SCALE

PLAN: 1" = 50'
Horiz & Vert
PROFILE: 1" = 50'
Horiz 1" = 50'
Vert 1" = 5'

TBM No. 1: "M" in Mueller on fire hydrant at NE corner of Chicago and Cedar Elev = 100.00

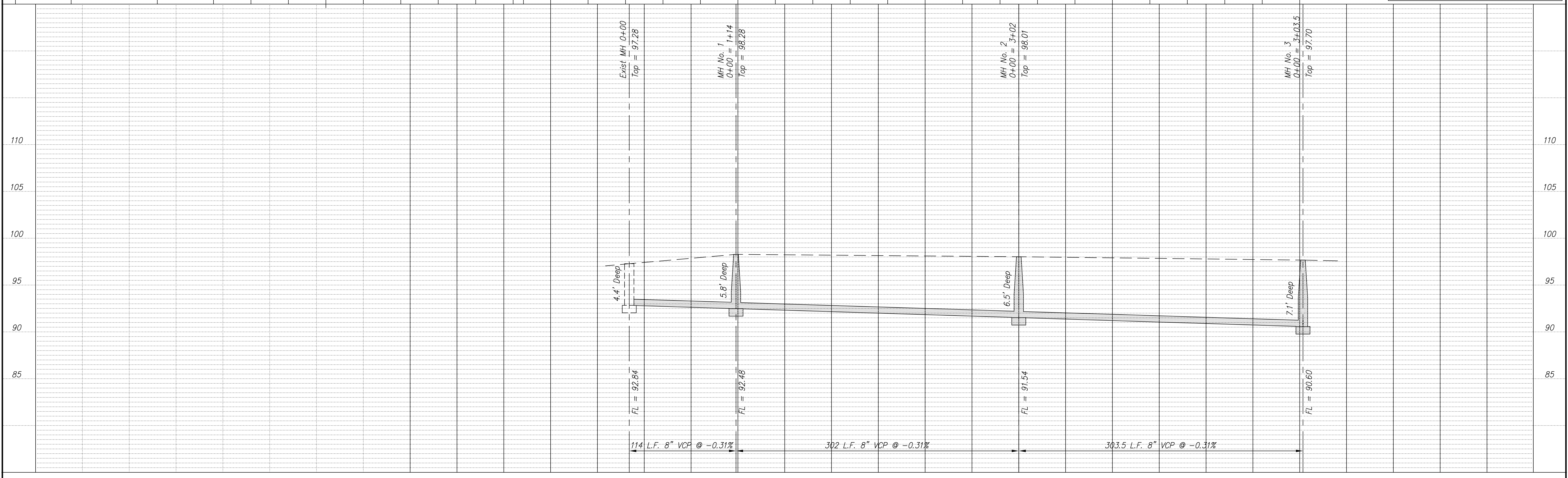
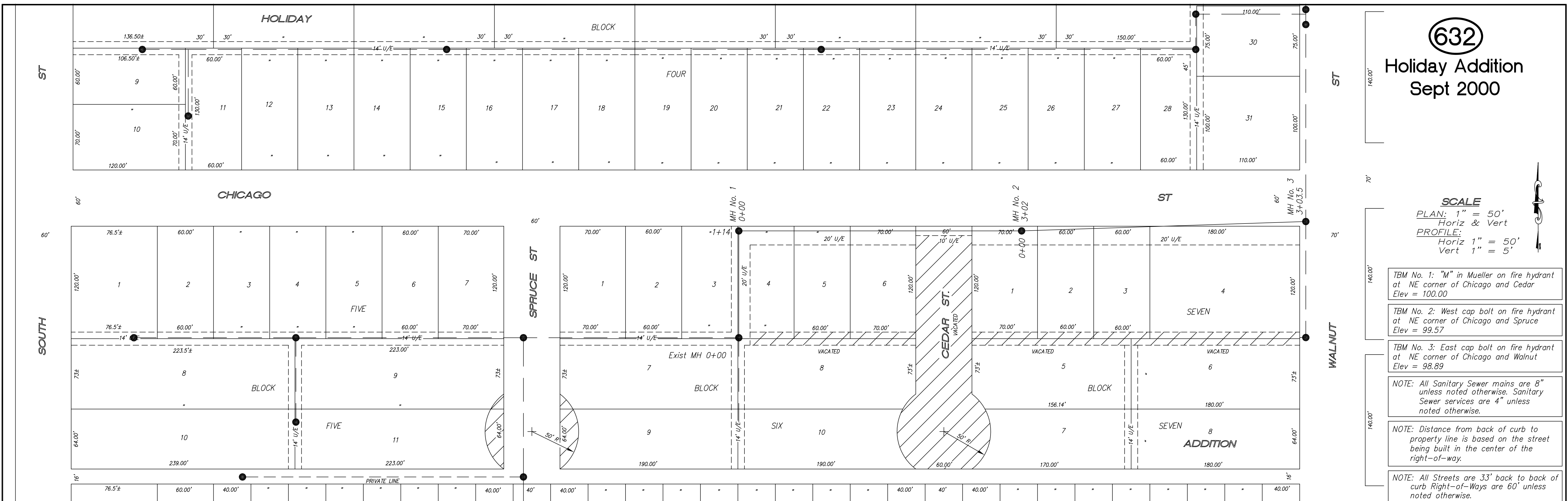
TBM No. 2: West cap bolt on fire hydrant at NE corner of Chicago and Spruce Elev = 99.57

TBM No. 3: East cap bolt on fire hydrant at NE corner of Chicago and Walnut Elev = 98.89

NOTE: All Sanitary Sewer mains are 8" unless noted otherwise. Sanitary Sewer services are 4" unless noted otherwise.

NOTE: Distance from back of curb to property line is based on the street being built in the center of the right-of-way.

NOTE: All Streets are 33' back to back of curb Right-of-Ways are 60' unless noted otherwise.



NO.	REVISIONS	DATE	BY

PROJECT TITLE:
Sanitary Sewer As-Built Drawing

CONTRACTOR:	DESIGN:	CHECKED:
SCALE: As Shown	DRAWN:	APPROVED:

CITY OF SALINA ENGINEERING DEPARTMENT 300 WEST ASH SALINA, KANSAS 67401 PH: 785.309.5725 FAX: 785.309.5713	DATE: Nov 2001	PROJ. NO.:
	FILENAME: 632.dwg	00-1247