

630

Eastview Estates Addition Sept 2000 Phase 3



SCALE

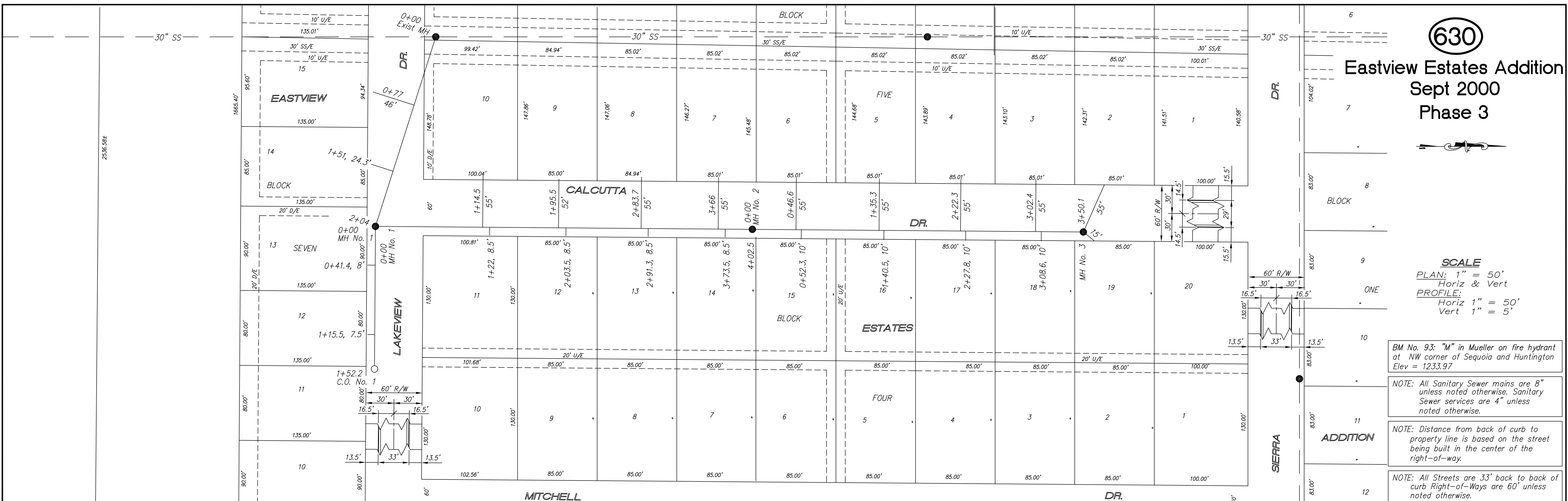
PLAN: 1" = 50'
Horiz & Vert
PROFILE: 1" = 50'
Vert 1" = 5'

BM No. 93: "M" in Mueller on fire hydrant at NW corner of Sequoia and Huntington Elev = 1233.97

NOTE: All Sanitary Sewer mains are 8" unless noted otherwise. Sanitary Sewer services are 4" unless noted otherwise.

NOTE: Distance from back of curb to property line is based on the street being built in the center of the right-of-way.

NOTE: All Streets are 33' back to back of curb Right-of-Ways are 60' unless noted otherwise.



NO.	REVISIONS	DATE	BY

PROJECT TITLE
Sanitary Sewer As-Built Drawing

CONTRACTOR Stevens Contractors	DESIGN	CHECKED
SCALE As Shown	DRAWN	APPROVED

CITY OF SALINA ENGINEERING DEPARTMENT 300 WEST ASH SALINA, KANSAS 67401 PH: 785.309.5725	DATE Nov 2001	PROJ. NO. 00-1256
	FILENAME 630.dwg	SHEET OF