

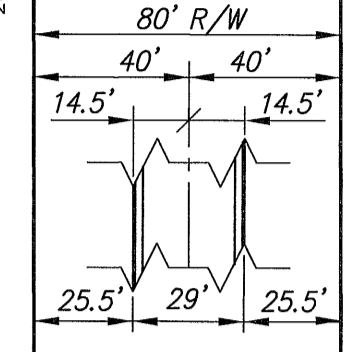
629

Airport Industrial Center Subdivision April 2001



BLOCK TWO

525.00' 20' U/E



AVE.

BLOCK FIVE

1

20' U/E

WERTZ

MH No. B-4  
0+00 = 2+80.3

MH No. B-5  
0+00 = 3+00

MH No. B-6  
4+15.2

For Continuation, See As-Built No. 629

STREET

BLOCK THREE

2

SCANLAN

Storm Water Storage

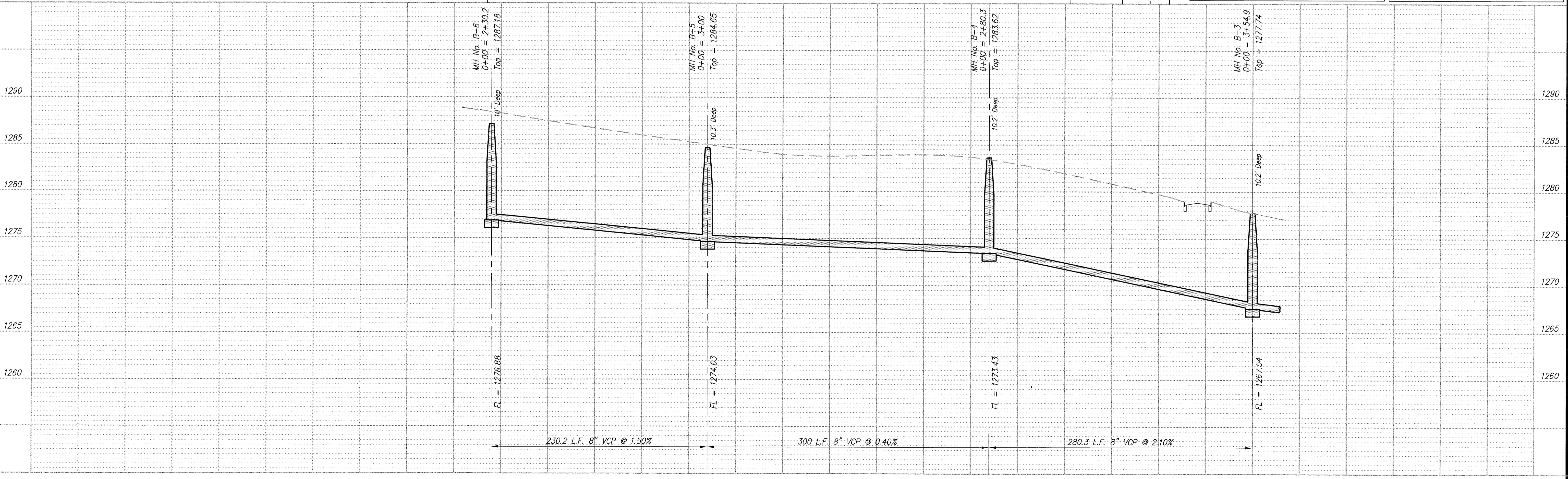
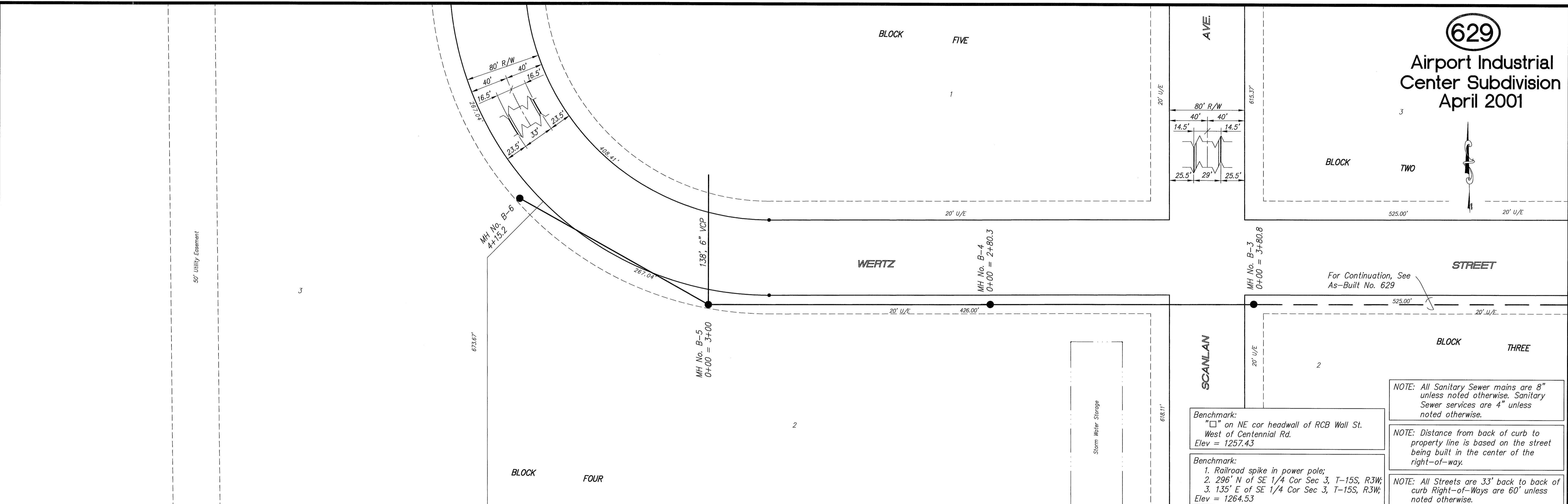
NOTE: All Sanitary Sewer mains are 8" unless noted otherwise. Sanitary Sewer services are 4" unless noted otherwise.

NOTE: Distance from back of curb to property line is based on the street being built in the center of the right-of-way.

Benchmark: "□" on NE cor headwall of RCB Wall St. West of Centennial Rd. Elev = 1257.43

Benchmark: 1. Railroad spike in power pole; 2. 296' N of SE 1/4 Cor Sec 3, T-15S, R3W; 3. 135' E of SE 1/4 Cor Sec 3, T-15S, R3W; Elev = 1264.53

NOTE: All Streets are 33' back to back of curb. Right-of-Ways are 60' unless noted otherwise.



PP2436A58.DWG Created: 12 Aug 99

NO.	REVISIONS	DATE	BY

PROJECT TITLE: **Sanitary Sewer As-Built Drawing**

CONSTRUCTED BY: *Stevens Contractors*

SCALE: Plan: 1" = 50'  
Profile: Horiz. 1" = 50'  
Vert. 1" = 5'

DESIGN: *KWD*  
CHECKED:   
APPROVED:   
DRAWN:   
DATE:   
FILENAME:   
SHEET:   
OF:

**CITY OF SALINA**  
ENGINEERING DEPARTMENT  
300 WEST ASH SALINA, KANSAS 67401  
PH: 785.309.5725 FAX: 785.309.5713

DATE: *Sept 2001*  
PROJ. NO.: *00-1256*  
FILENAME: *629.dwg*  
SHEET:   
OF: