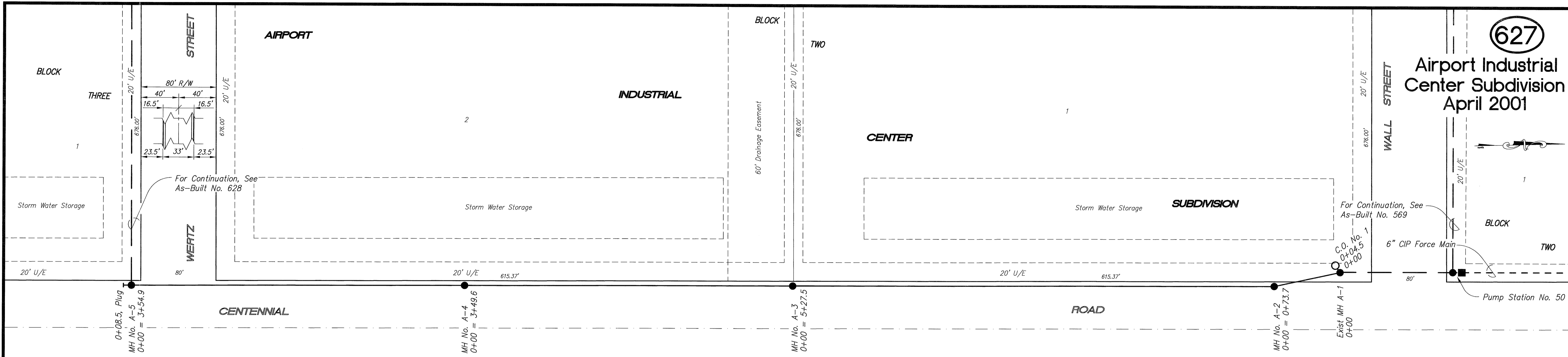


627

Airport Industrial Center Subdivision April 2001



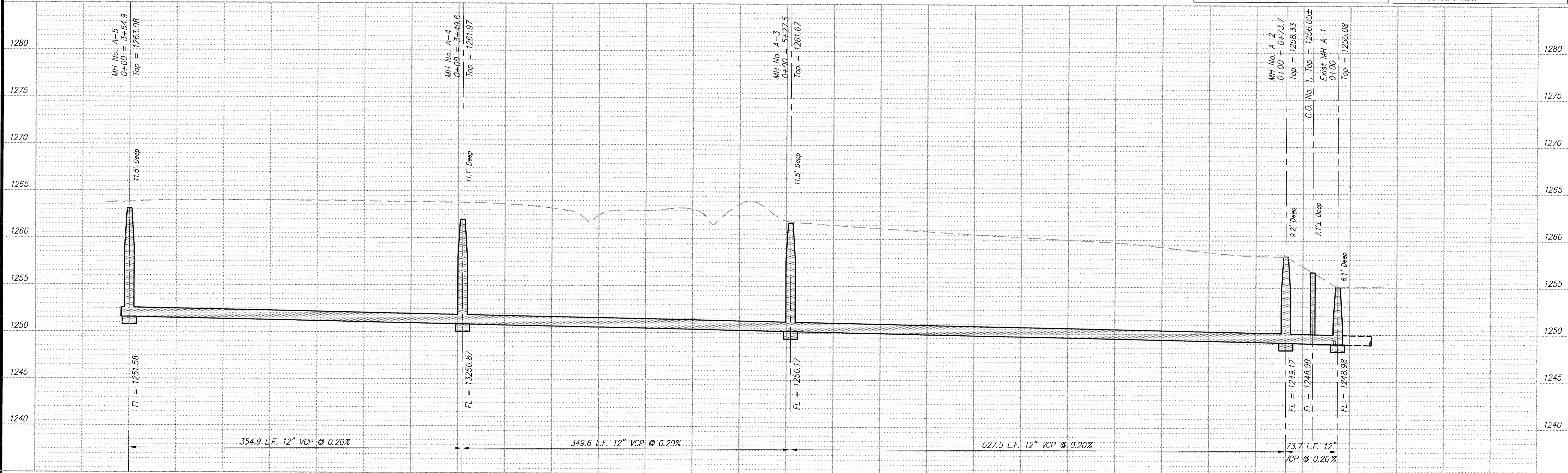
Benchmark:
 "□" on NE cor headwall of RCB Wall St.
 West of Centennial Rd.
 Elev = 1257.43

Benchmark:
 1. Railroad spike in power pole;
 2. 296' N of SE 1/4 Cor Sec 3, T-15S, R3W;
 3. 135' E of SE 1/4 Cor Sec 3, T-15S, R3W;
 Elev = 1264.53

NOTE: All Sanitary Sewer mains are 8" unless noted otherwise. Sanitary Sewer services are 4" unless noted otherwise.

NOTE: Distance from back of curb to property line is based on the street being built in the center of the right-of-way.

NOTE: All Streets are 33' back to back of curb Right-of-Ways are 60' unless noted otherwise.



NO.	REVISIONS	DATE	BY

PROJECT TITLE:
Sanitary Sewer As-Built Drawing

CONSTRUCTED BY:
 Stevens Contractors

SCALE:
 Plan: 1" = 50'
 Profile: Horiz. 1" = 50'
 Vert. 1" = 5'

DESIGN:
 DRAWN: KWD

CHECKED:
 APPROVED:

CITY OF SALINA
 ENGINEERING DEPARTMENT
 300 WEST ASH SALINA, KANSAS 67401
 785.309.5725 (Phone) 785.309.5713 (Fax)

DATE: Sept 2001
 PROJ. NO.: 00+1256
 FILENAME: 627.dwg
 SHEET: OF: