

625
Briargate Addition
Sept 2000

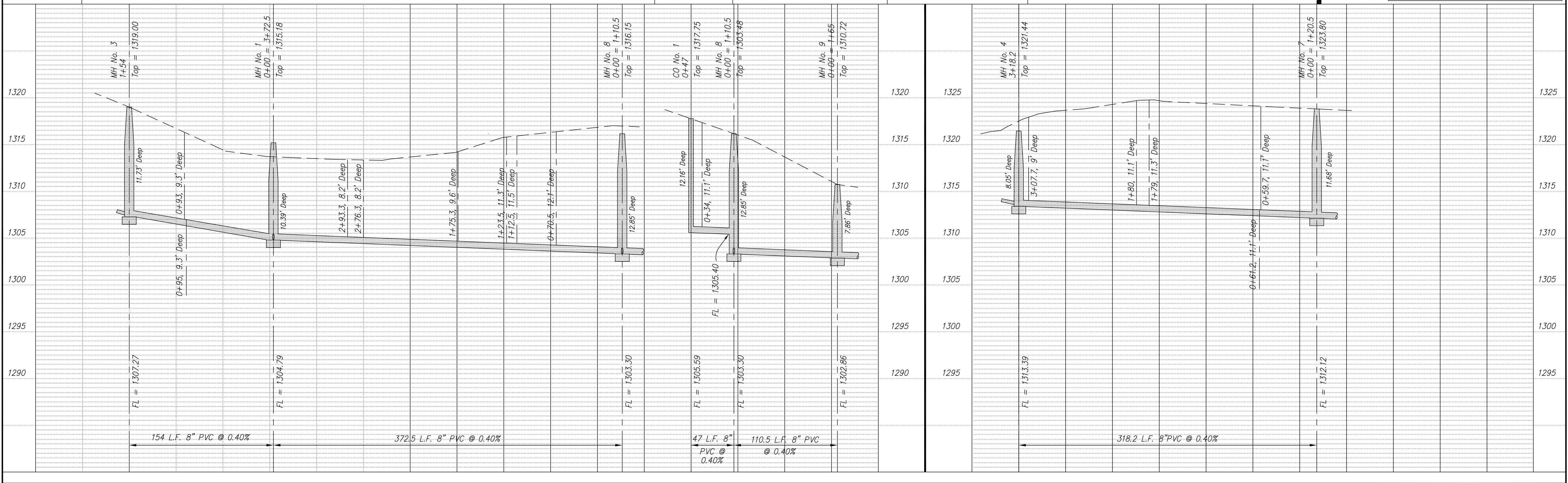
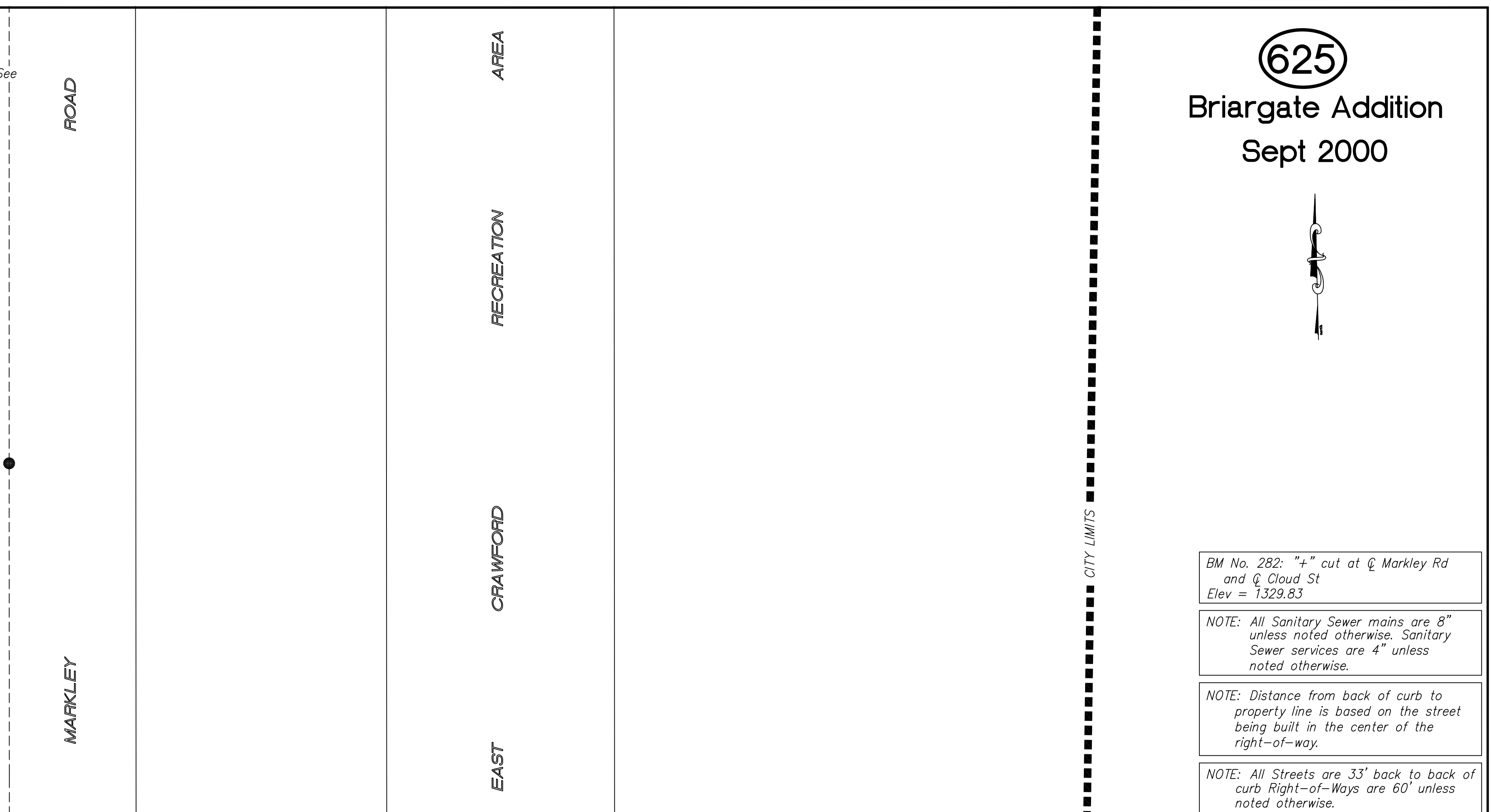
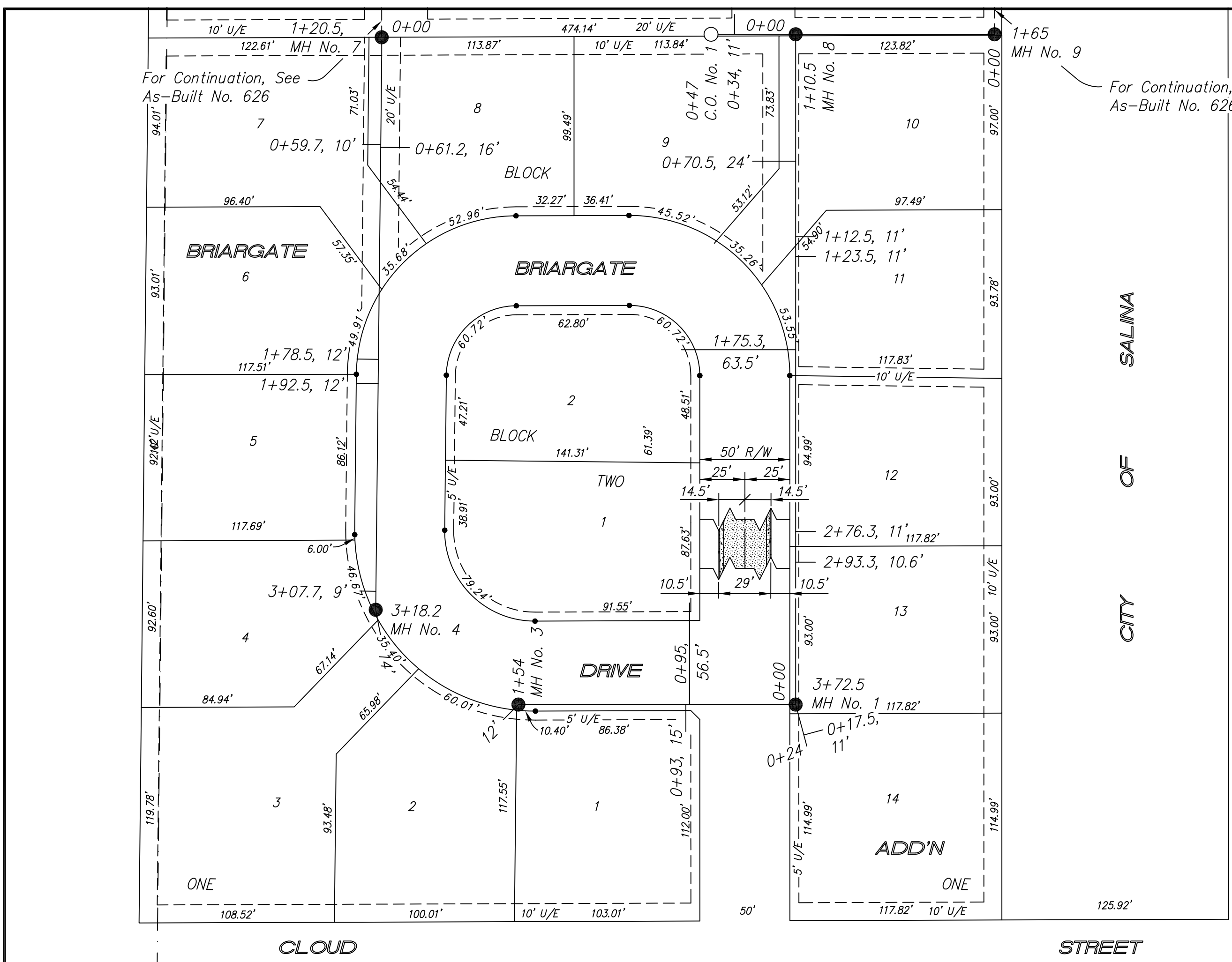


BM No. 282: "+ " cut at @ Markley Rd and @ Cloud St
 Elev = 1329.83

NOTE: All Sanitary Sewer mains are 8" unless noted otherwise. Sanitary Sewer services are 4" unless noted otherwise.

NOTE: Distance from back of curb to property line is based on the street being built in the center of the right-of-way.

NOTE: All Streets are 33' back to back of curb Right-of-Ways are 60' unless noted otherwise.



PROJECT TITLE			CONSTRUCTED BY:			SCALE:			DESIGN:			CHECKED:			CITY OF SALINA			DATE:			PROJ. NO.:		
Sanitary Sewer As-Built Drawing			Stevens Contractors			Plan: 1" = 50' Profile: Horiz. 1" = 50' Vert. 1" = 5'			KWD			APPROVED:			ENGINEERING DEPARTMENT			Aug 2001			Built Private		
NO. REVISIONS			DATE BY			FILENAME:			DRAWN:			APPROVED:			300 WEST ASH SALINA, KANSAS 67401			625.dwg			SHEET: OF:		