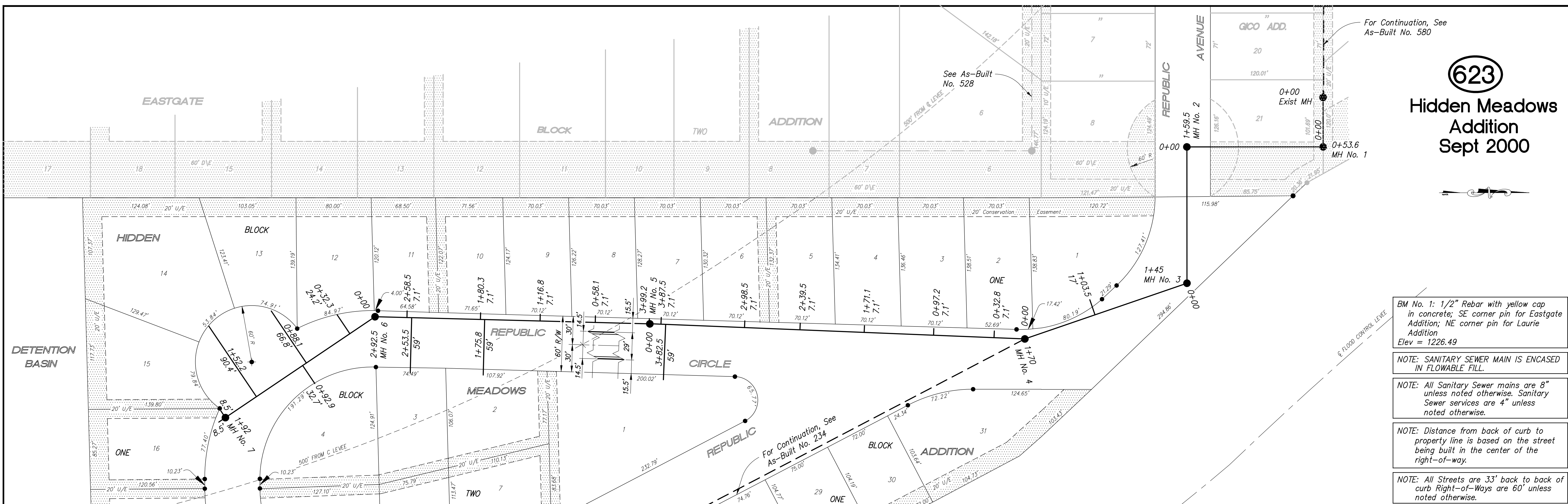
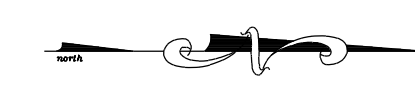


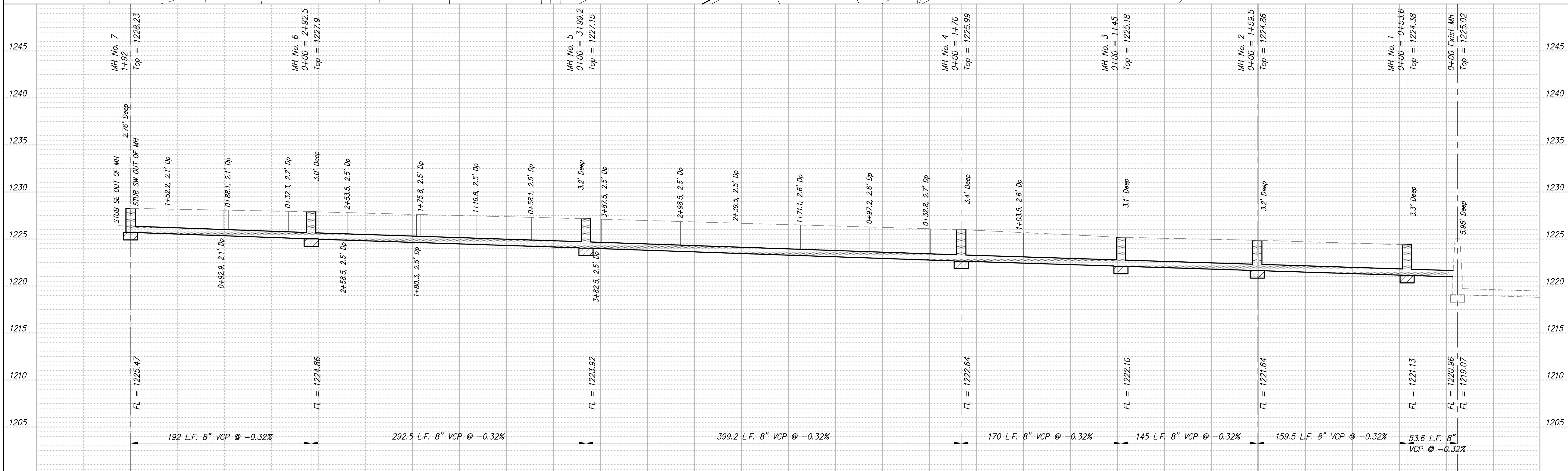
623

Hidden Meadows Addition Sept 2000

For Continuation, See As-Built No. 580



- BM No. 1: 1/2" Rebar with yellow cap in concrete; SE corner pin for Eastgate Addition; NE corner pin for Laurie Addition; Elev = 1226.49
- NOTE: SANITARY SEWER MAIN IS ENCASED IN FLOWABLE FILL.
- NOTE: All Sanitary Sewer mains are 8" unless noted otherwise. Sanitary Sewer services are 4" unless noted otherwise.
- NOTE: Distance from back of curb to property line is based on the street being built in the center of the right-of-way.
- NOTE: All Streets are 33' back to back of curb Right-of-Ways are 60' unless noted otherwise.



NO.	REVISIONS	DATE	BY

PROJECT TITLE:  
**Sanitary Sewer As-Built Drawing**

CONSTRUCTED BY:  
Stevens Contractors

SCALE:  
Plan: 1" = 50'  
Profile: Horiz. 1" = 50'  
Vert. 1" = 5'

DESIGN:  
DRAWN:  
CHECKED:  
APPROVED:

CITY OF SALINA  
ENGINEERING DEPARTMENT  
300 WEST ASH SALINA, KANSAS 67401  
(913)826-7290

DATE: Feb 2001  
PROJ. NO.: Built Private  
FILENAME: 623.dwg  
SHEET: OF: