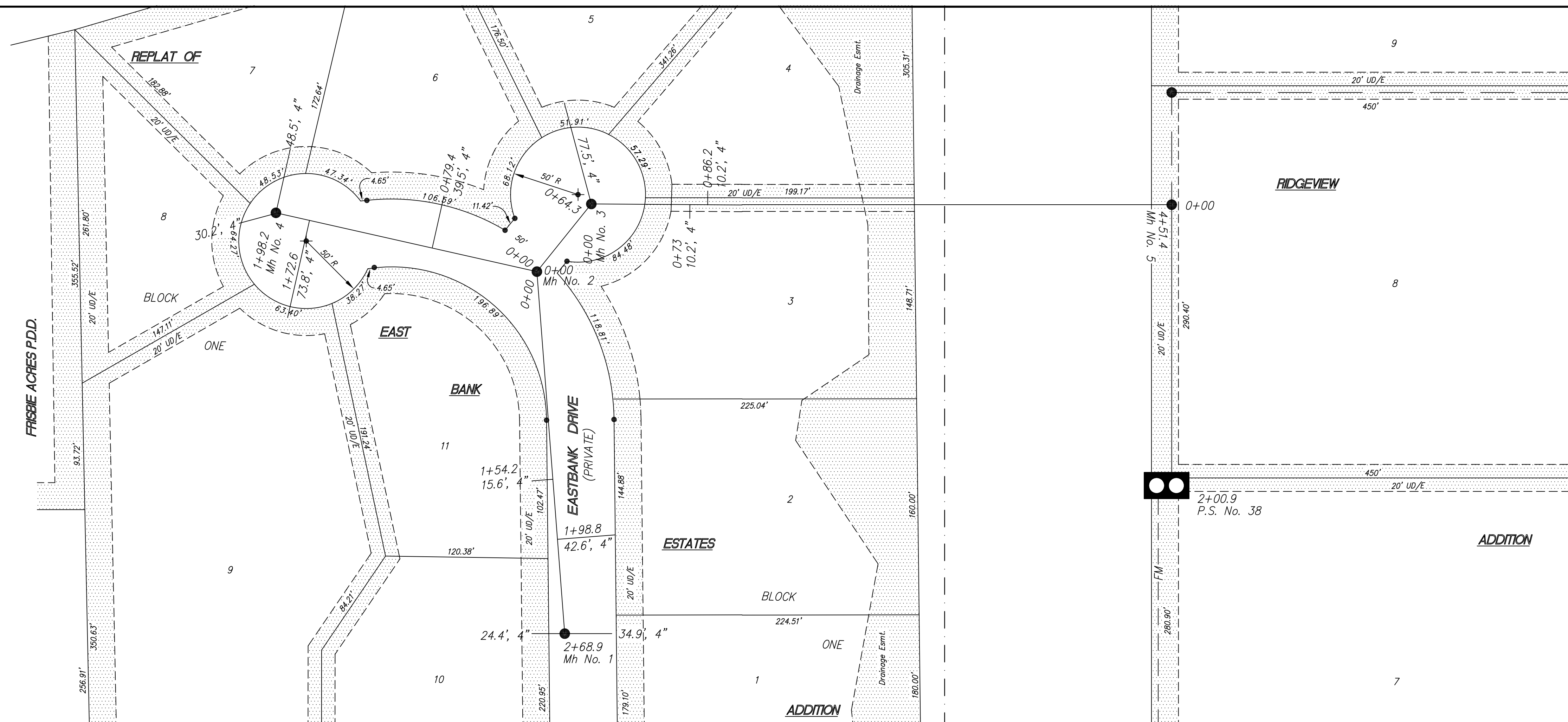


622

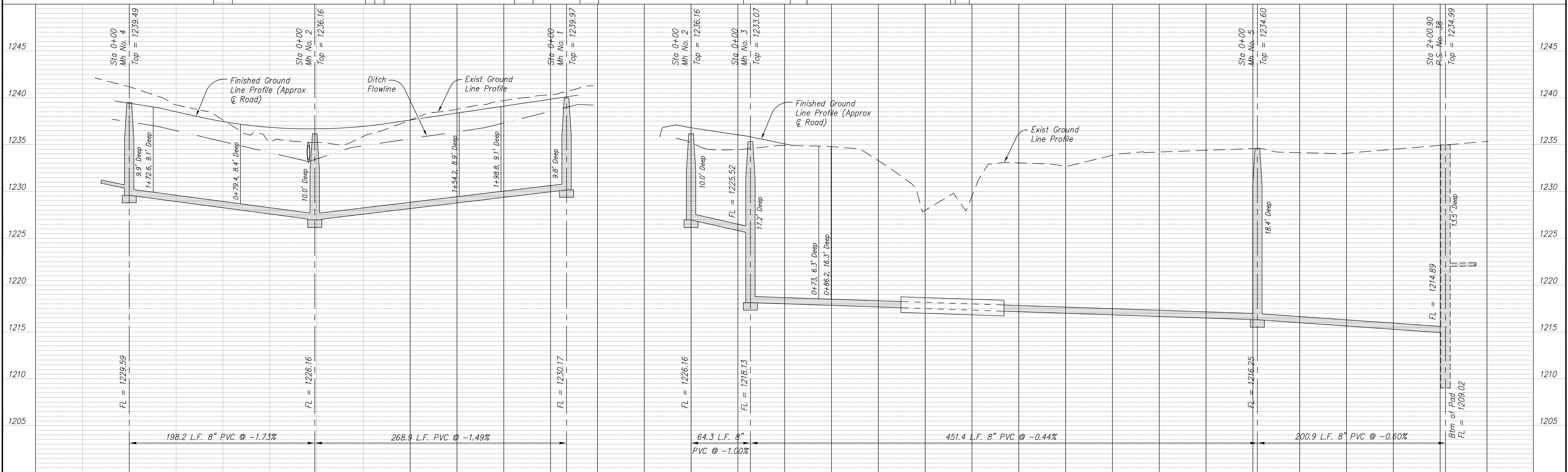
Eastbank Addition Aug 2000



City of Salina BM No. 239:
West cap bolt on fire hydrant near
bottom of hill of Marymount Rd.
Elev = 1240.50

NOTE: All Sanitary Sewer mains are 8"
unless noted otherwise.

NOTE: Distance from back of curb to
property line is based on the street
being built in the center of the
right-of-way.



NO.	REVISIONS	DATE	BY

PROJECT TITLE:
Sanitary Sewer As-Built Drawing

CONSTRUCTED BY:
Stevens Contractors

SCALE:
Plan: 1" = 50'
Profile: Horiz. 1" = 50'
Vert. 1" = 5'

DESIGN: KWD
DRAWN: KWD

CHECKED:
APPROVED:

CITY OF SALINA
ENGINEERING DEPARTMENT
300 WEST ASH SALINA, KANSAS 67401
(913)826-7290

DATE: Jan 2001
FILENAME: 622r13.dwg

PROJ. NO.: 00-1217
SHEET: OF: