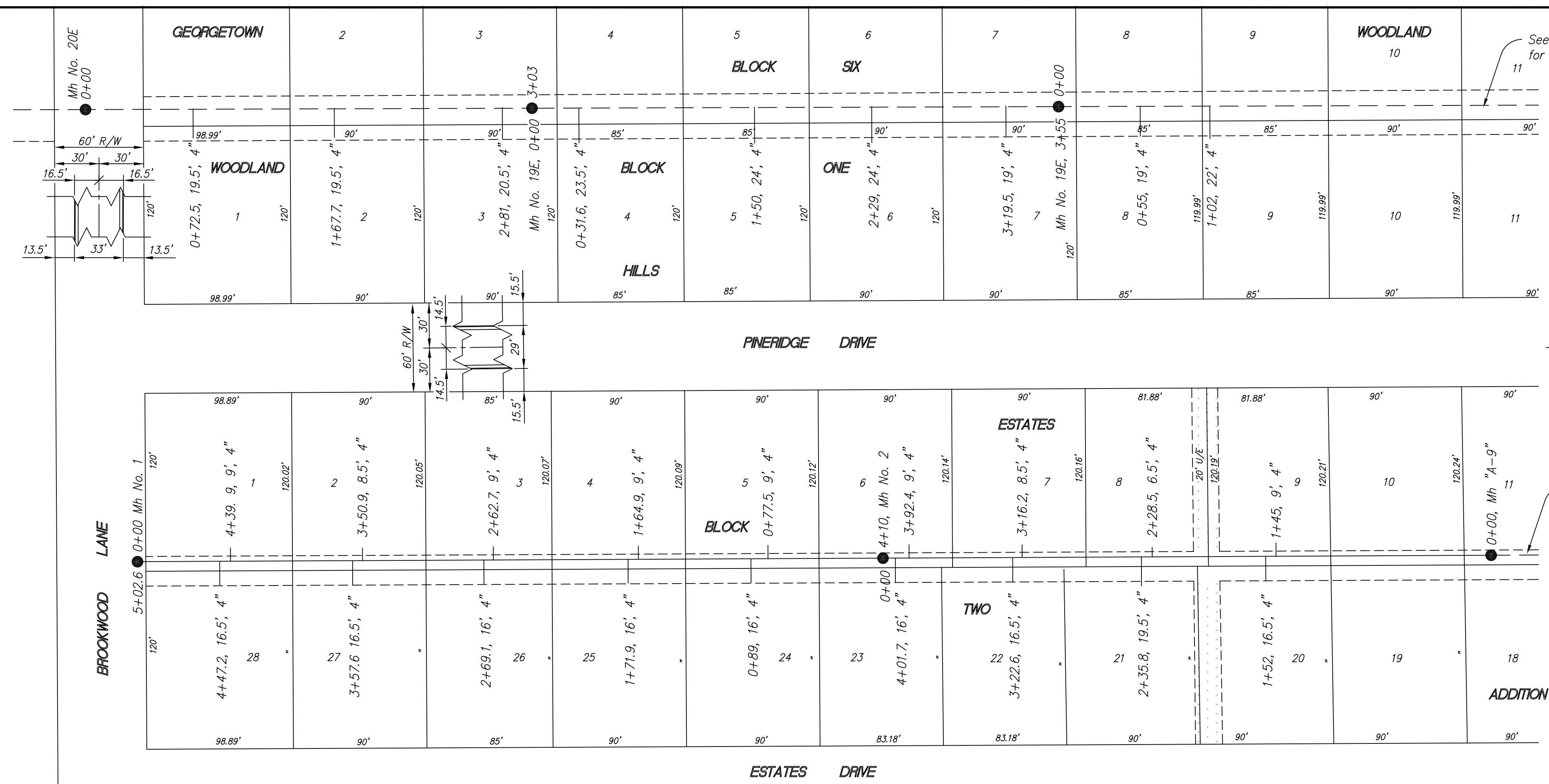
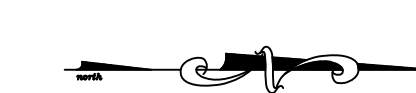


620
Woodland Hills
Estates Addition
Phase 3
Aug 2000



See As-built No. 381
for Depths of 21" Main



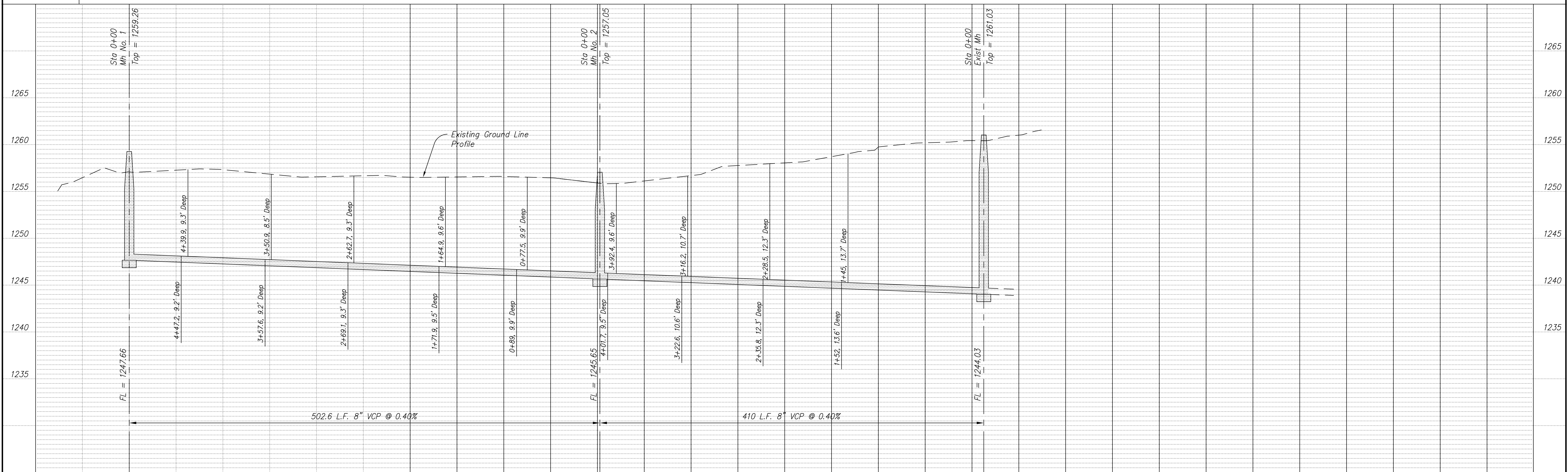
See As-built No. 580
for Continuation

BM #: "M" in Mueller on fire hydrant at
Lot 10, Block One, or 418 Pine
Ridge Drive
Elev = 12362.59

NOTE: All Sanitary Sewer mains are 8"
unless noted otherwise.

NOTE: Distance from back of curb to
property line is based on the street
being built in the center of the
right-of-way.

NOTE: All Streets are 33' back of
curb Right-of-Ways are 60' unless
noted otherwise.



| NO. | REVISIONS | DATE | BY |
|-----|-----------|------|----|
| | | | |

PROJECT TITLE:
Sanitary Sewer As-Built Drawing

CONSTRUCTED BY:
 Stevens Contractors

SCALE:
 Plan: 1" = 50'
 Profile: Horiz. 1" = 50'
 Vert. 1" = 5'

DESIGN: KWD
 CHECKED: KWD
 DRAWN: KWD
 APPROVED: KWD

CITY OF SALINA
 ENGINEERING DEPARTMENT
 300 WEST ASH SALINA, KANSAS 67401
 (913)826-7290

DATE: Jan 2001
 FILENAME: 619r13.dwg
 PROJ. NO.: KWD
 SHEET: OF: