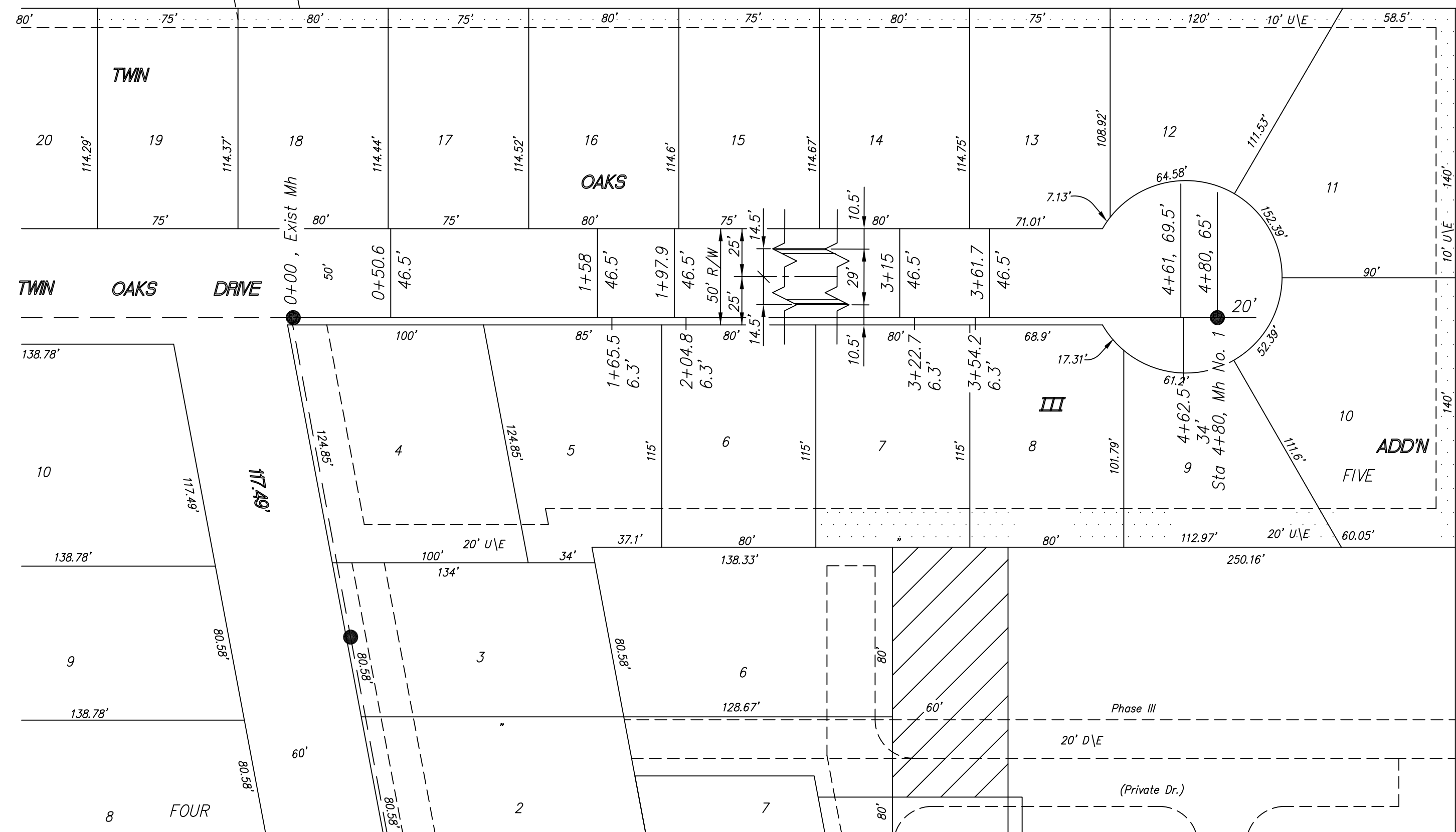


619

Twin Oaks Addition
Phase 3
Mar. 2000

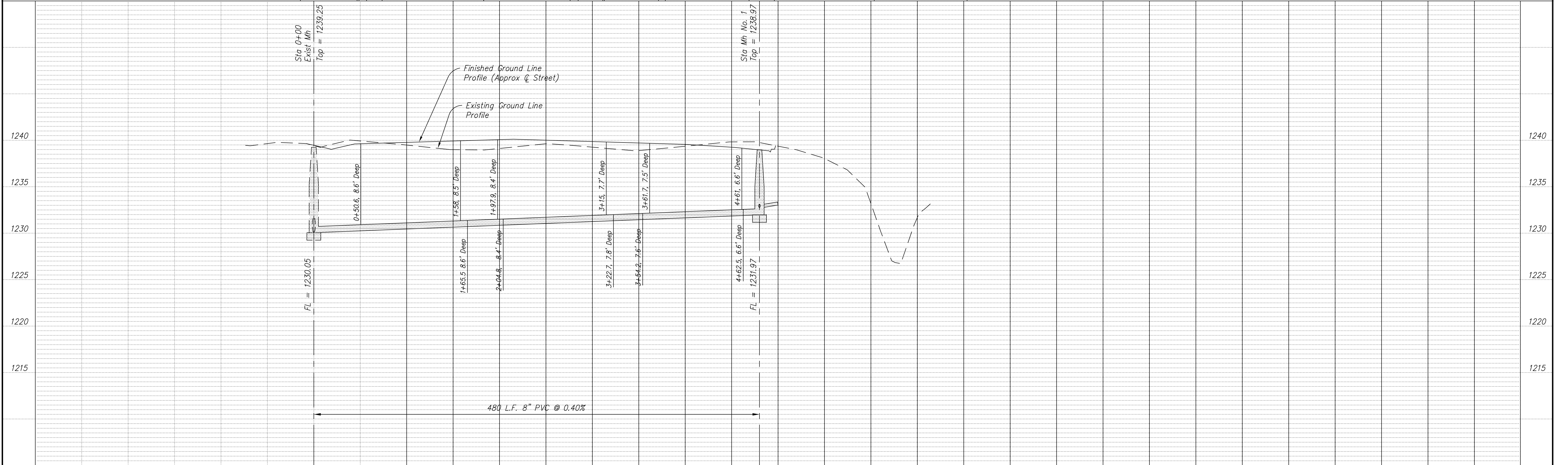


BM #93: NW corner of First Baptist Church sign & flower planter in the SE quadrant Ohio & Magnolia intersection
Elev = 1231.37

NOTE: All Sanitary Sewer mains are 8" unless noted otherwise.

NOTE: Distance from back of curb to property line is based on the street being built in the center of the right-of-way.

NOTE: All Streets are 33' back to back of curb Right-of-Ways are 60' unless noted otherwise.



NO.	REVISIONS	DATE	BY

PROJECT TITLE:
Sanitary Sewer As-Built Drawing

CONSTRUCTED BY:
Stevens Contractors

SCALE:
Plan: 1" = 50'
Profile: Horiz. 1" = 50'
Vert. 1" = 5'

DESIGN: KWD
CHECKED: KWD
DRAWN: KWD
APPROVED: KWD

CITY OF SALINA
ENGINEERING DEPARTMENT
300 WEST ASH SALINA, KANSAS 67401
(913)826-7290

DATE: Jan 2001
FILENAME: 619r13.dwg
PROJ. NO.: KWD
SHEET: OF: