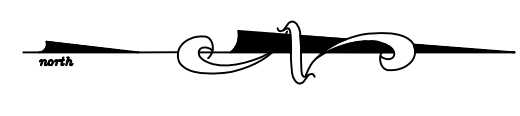


BM #93: "m" in Mueller on Fire Hydrant NW cor Sequoia and Huntington. Elev = 1233.97

NOTE: All Sanitary Sewer mains are 8" unless noted otherwise.

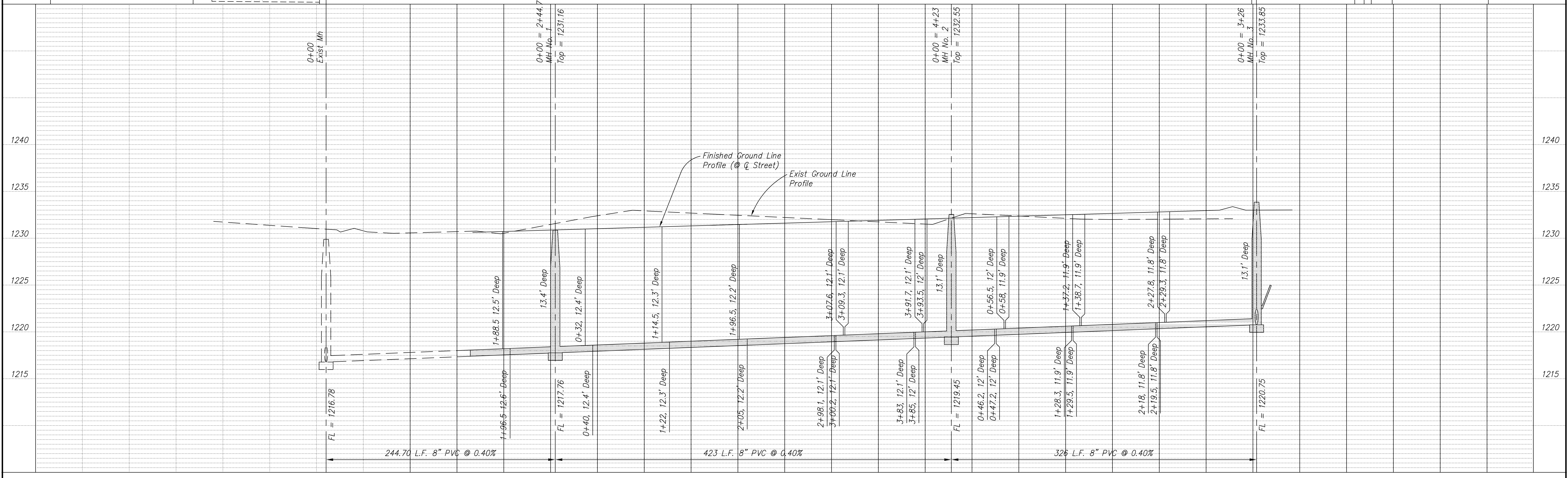
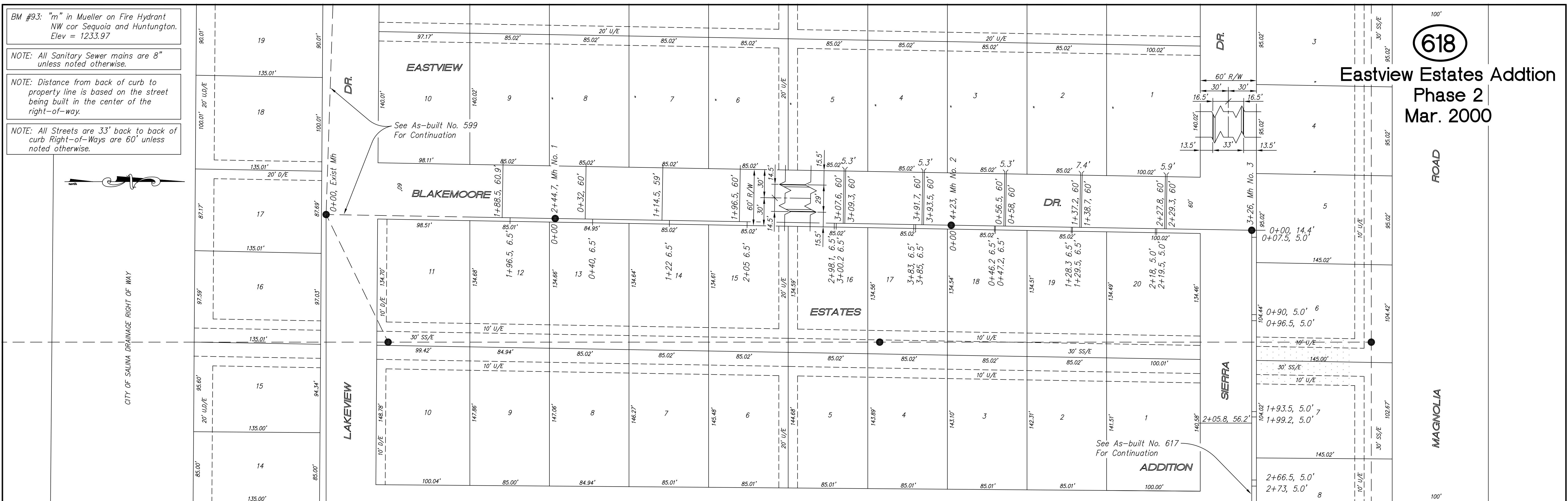
NOTE: Distance from back of curb to property line is based on the street being built in the center of the right-of-way.

NOTE: All Streets are 33' back to back of curb Right-of-Ways are 60' unless noted otherwise.



618

Eastview Estates Addition  
Phase 2  
Mar. 2000



PROJECT TITLE <b>Sanitary Sewer As-Built Drawing</b>						CONSTRUCTED BY: Stevens Contractors		SCALE: Plan: 1" = 50' Profile: Horiz. 1" = 50' Vert. 1" = 5'		DESIGN: KWD		CHECKED: APPROVED:		CITY OF SALINA ENGINEERING DEPARTMENT 300 WEST ASH SALINA, KANSAS 67401 (913)826-7290		DATE: Dec 2000		PROJ. NO.: 99-1198	
NO.	REVISIONS	DATE	BY	NO.	REVISIONS	DATE	BY							FILENAME: 617r13.dwg		SHEET: OF:			