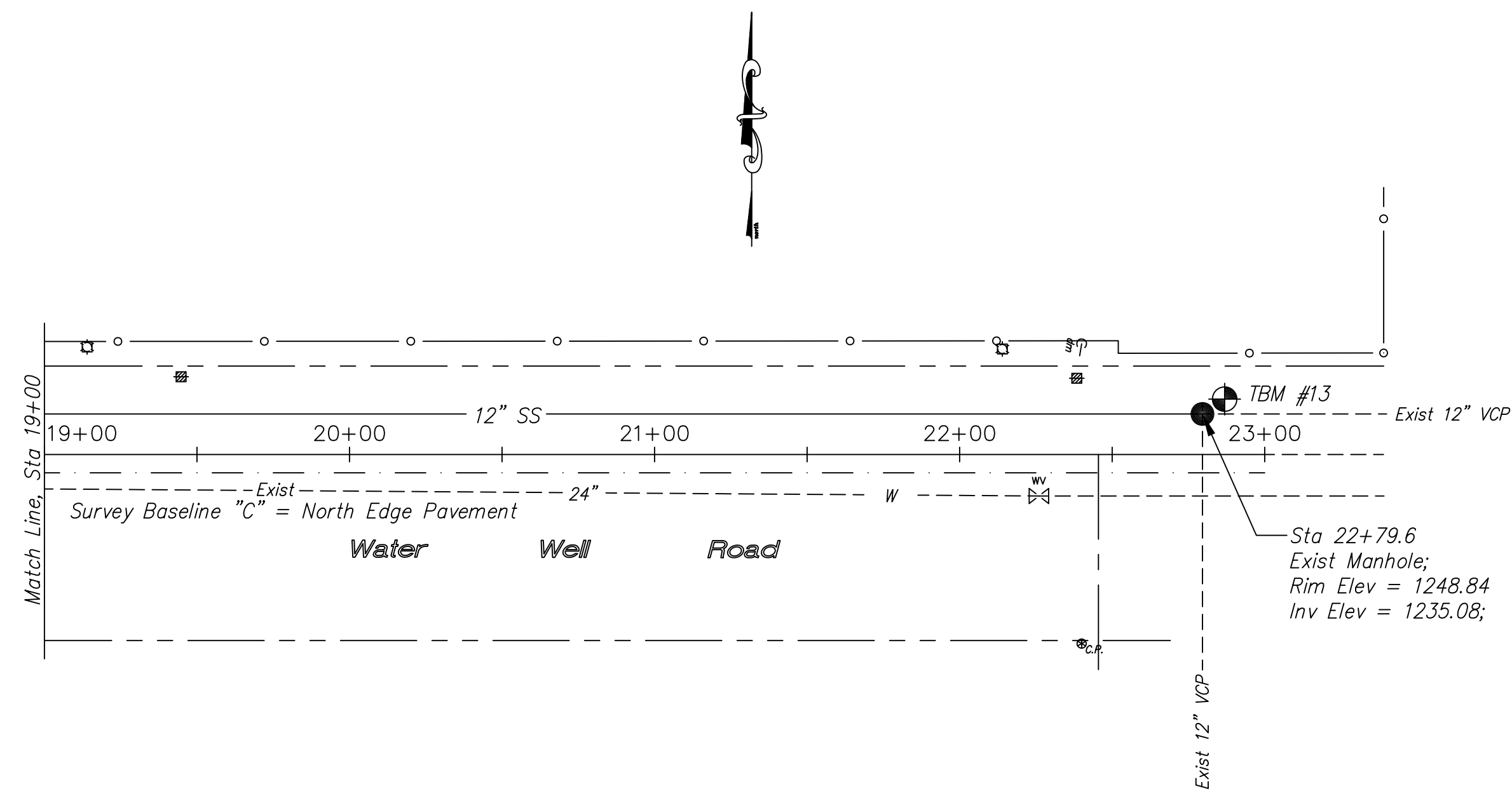


616

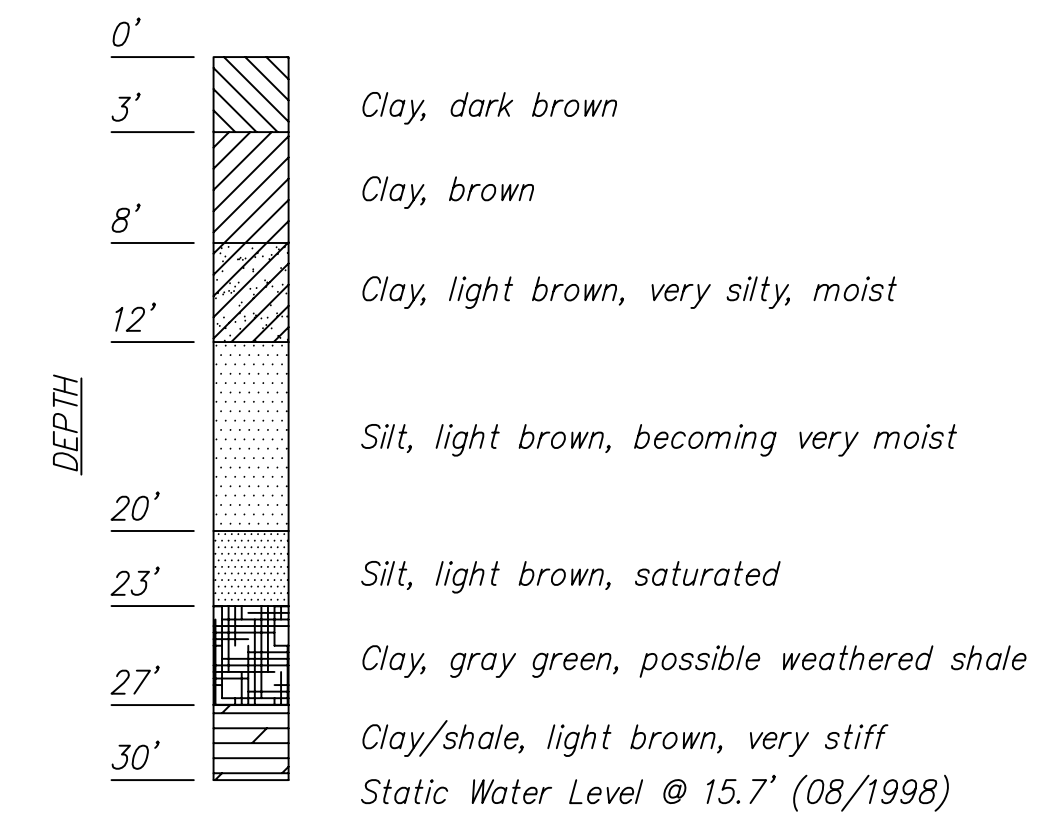
South Ninth Street
Utility Improvements
Aug. 1999

TBM #13: Top manhole ring
13.3' Left of Sta 22+78;
Elev = 1248.75



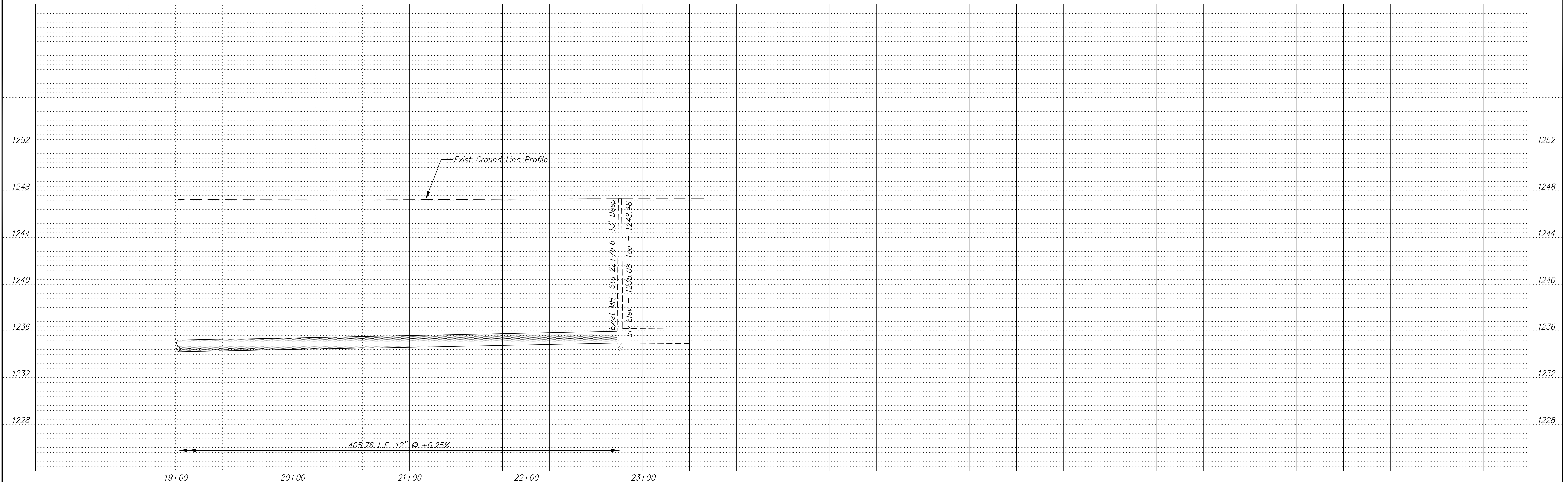
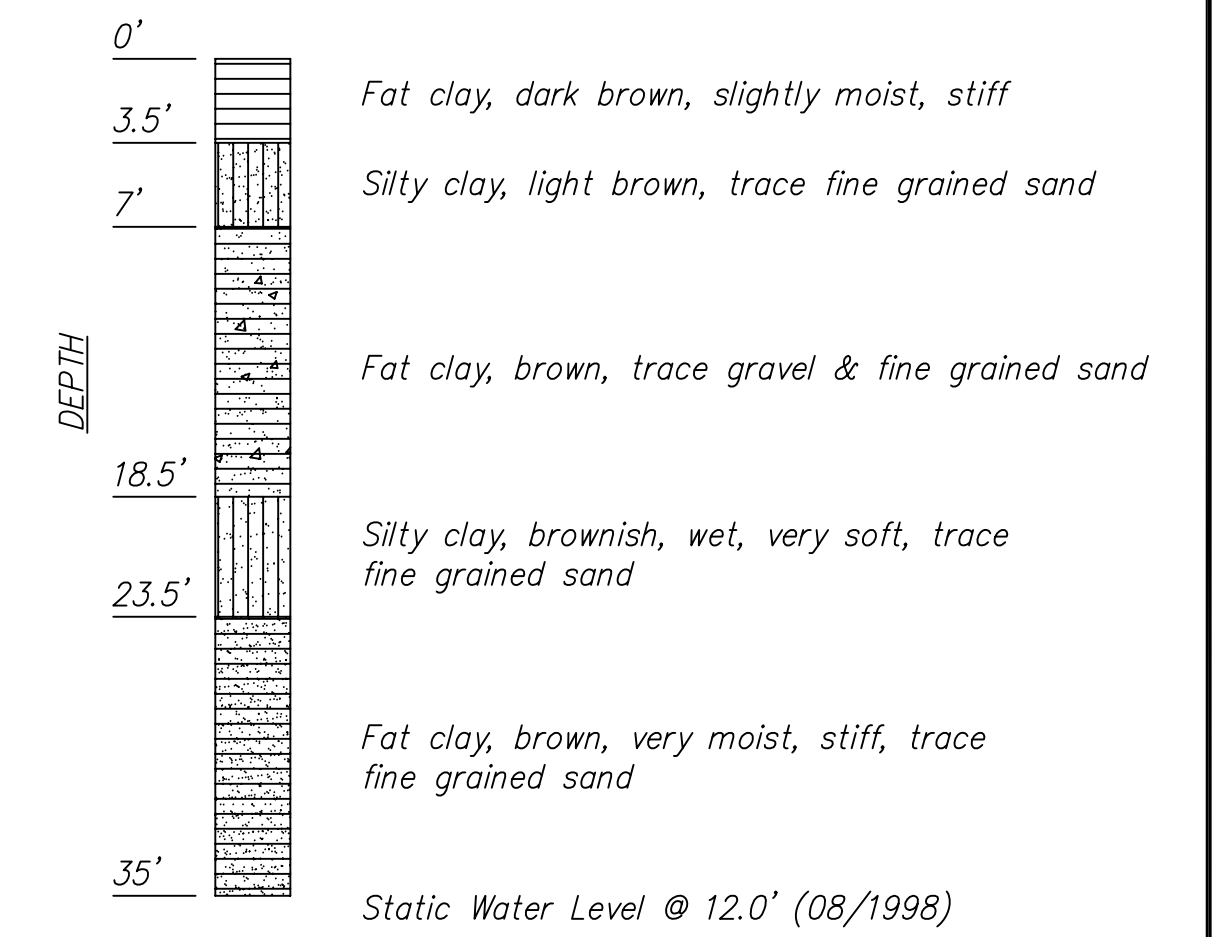
SOUTH NINTH ST. & WATER WELL RD.

Test Hole No. 2 is located 230' West of @ South Ninth Street & 8' North of North edge of pavement of Water Well Road



SOUTH NINTH ST. & SCHILLING RD.

Test Hole No. 1 is located 80' South of South curb of Schilling Road & 80' West of West edge of South Ninth Street pavement



PROJECT TITLE				CONSTRUCTED BY:		SCALE:		DESIGN:		CHECKED:		CITY OF SALINA		DATE:		PROJ. NO.:	
Sanitary Sewer As-Built Drawing				Stevens Contractors		Plan: 1" = 40' Profile: Horiz, 1" = 40' Vert, 1" = 4'		KWD		KWD		ENGINEERING DEPARTMENT		Aug 99		98-1134	
NO. REVISIONS DATE BY				NO. REVISIONS DATE BY		DRAWN:		KWD		APPROVED:		300 WEST ASH SALINA, KANSAS 67401		FILENAME:		SHEET: OF:	
						616r13.dwg						(913)826-7290					