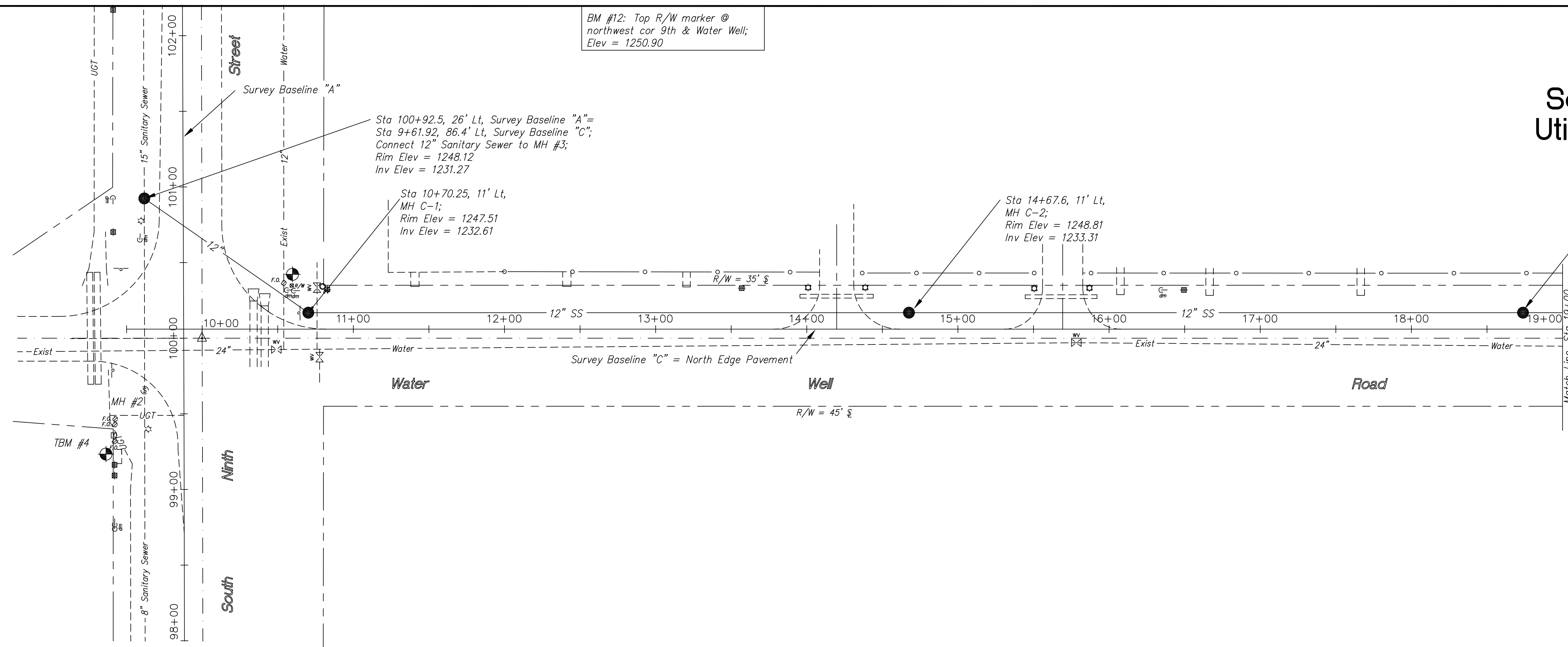


TEST HOLE #2:
230' West of C Ninth St. &
8' North of the North edge
of pavement of Water Well Rd.

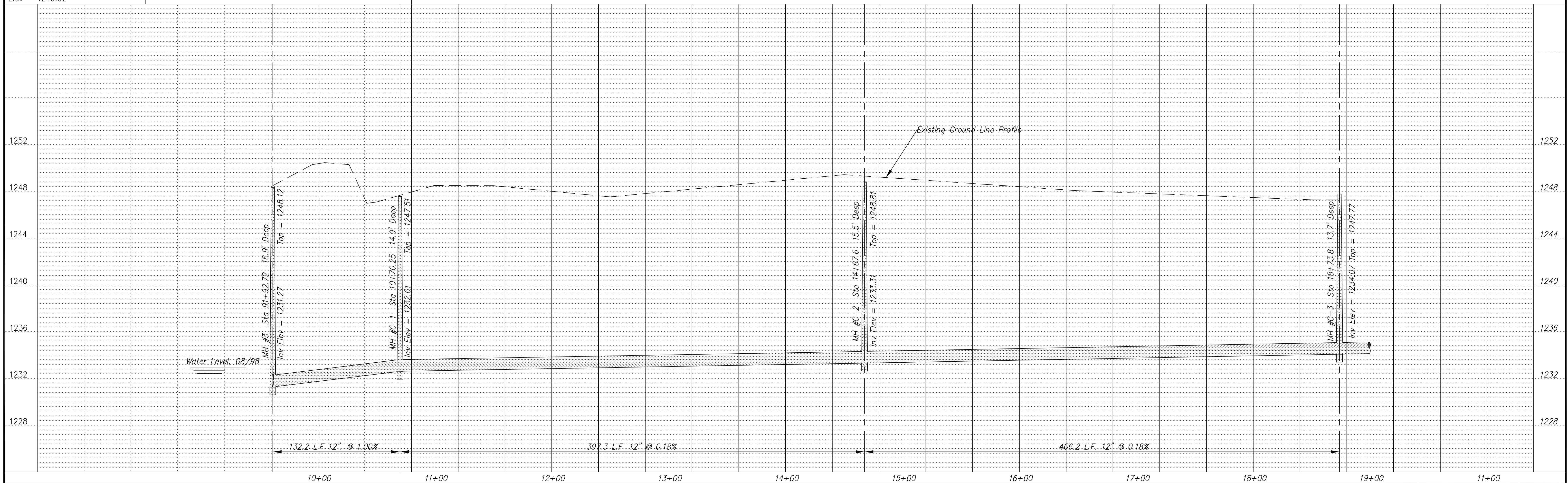
BM #12: Top R/W marker @
northwest cor 9th & Water Well;
Elev = 1250.90

615

South Ninth Street
Utility Improvements
Aug. 1999



TBM #4: Southwest cor conc slab
@ southwest cor 9th & Water Well;
Elev = 1249.62



NO.	REVISIONS	DATE	BY

PROJECT TITLE:
Sanitary Sewer As-Built Drawing

CONSTRUCTED BY:
Stevens Cont.

SCALE:
Plan: 1" = 40'
Profile: Horiz, 1" = 40'
Vert, 1" = 4'

DESIGN: KWD
CHECKED: KWD
DRAWN: KWD
APPROVED: KWD

CITY OF SALINA
ENGINEERING DEPARTMENT
300 WEST ASH SALINA, KANSAS 67401
(913)826-7290

DATE: Aug 99
FILENAME: 615r13.dwg
PROJ. NO.: 98-1134
SHEET: OF: