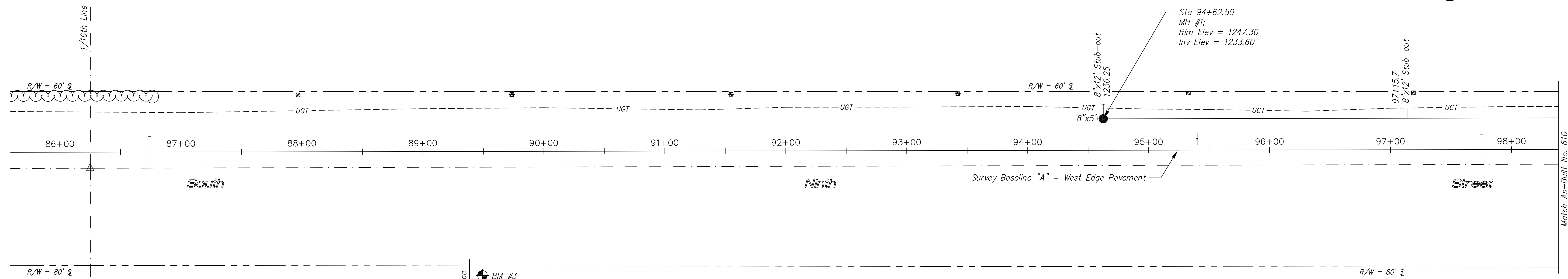


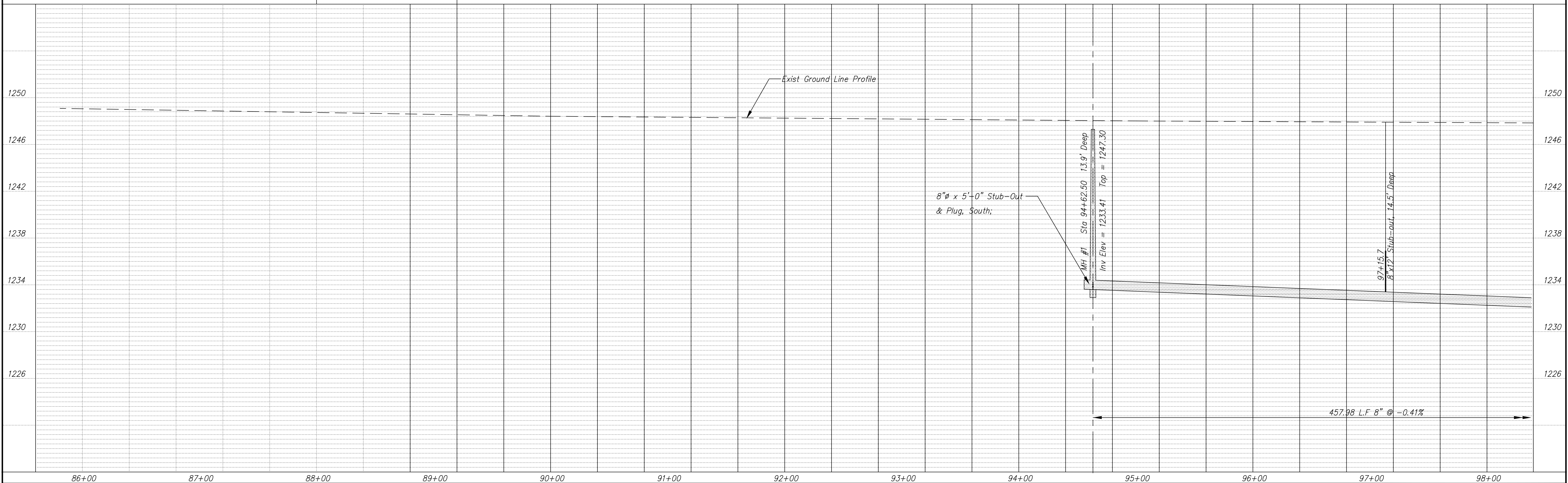
614

South Ninth Street Utility Improvements Aug. 2000

NE 1/4 NE 1/4, Sec 11, T-15S, R-3W



TBM #3: NW cor conc base on light pole north side Phillips E. entrance, Rt. 89+00±
Elev = 1251.73



NO.	REVISIONS	DATE	BY

PROJECT TITLE:
Sanitary Sewer As-Built Drawing

CONSTRUCTED BY:
Stevens Contractors

SCALE:
Plan: 1" = 40'
Profile: Horiz, 1" = 40'
Vert, 1" = 4'

DESIGN: KWD
CHECKED: KWD
DRAWN: KWD
APPROVED:

CITY OF SALINA
ENGINEERING DEPARTMENT
300 WEST ASH SALINA, KANSAS 67401
(913)826-7290

DATE: Aug 99
PROJ. NO.: 98-1134
FILENAME: 614r13.dwg
SHEET: OF: