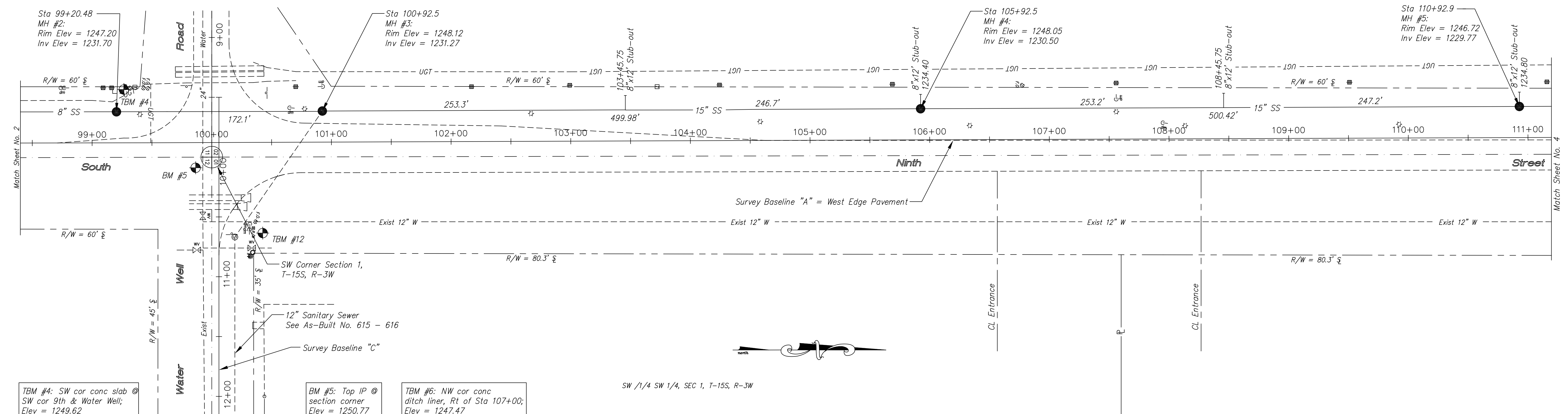


South Ninth Street
Utility Improvements
Aug. 1999

613

SE 1/4 SE 1/4, SEC 2, T-15S, R-3W

TEST HOLE #2:
230' West of C_LNinth St. &
8' North of the North edge
of pavement of Water Well Rd.

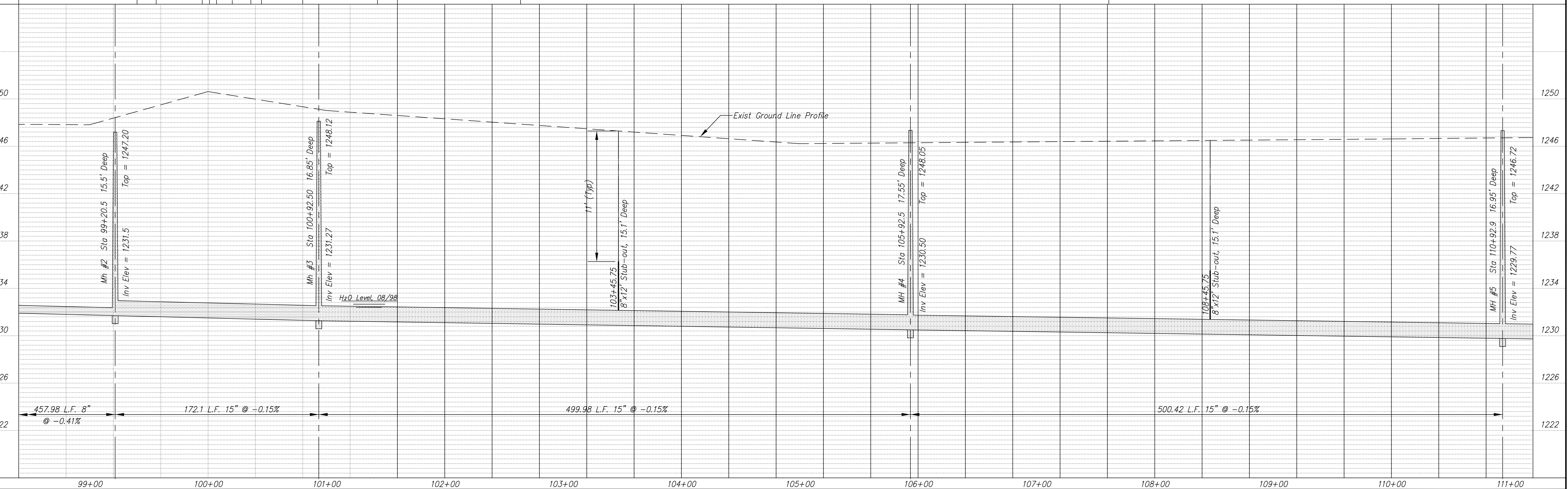


TBM #4: SW cor conc slab @ SW cor 9th & Water Well; Elev = 1249.62

BM #5: Top IP @ section corner Elev = 1250.77

TBM #6: NW cor conc ditch liner, Rt of Sta 107+00; Elev = 1247.47

SW 1/4 SW 1/4, SEC 1, T-15S, R-3W



Sanitary Sewer As-Built Drawing

PROJECT TITLE				CONSTRUCTED BY				SCALE				DESIGN				CHECKED				CITY OF SALINA				DATE				PROJ NO:															
				Stevens Contractors				Plan: 1" = 40' Profile: Horiz, 1" = 40' Vert, 1" = 4'				KWD				KWD				ENGINEERING DEPARTMENT				Dec 2000				98-1134															
NO.				REVISIONS				DATE				BY				NO.				REVISIONS				DATE				BY				FILENAME				SHEET				OF			
																								613r13.dwg																			