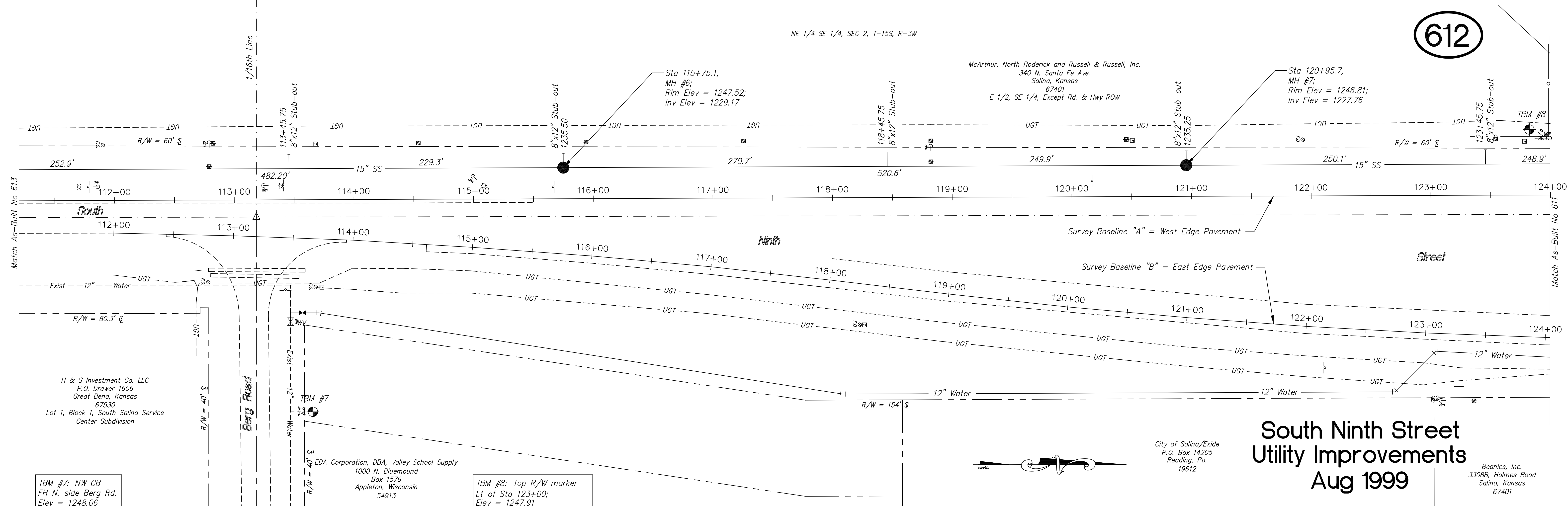


NE 1/4 SE 1/4, SEC 2, T-15S, R-3W

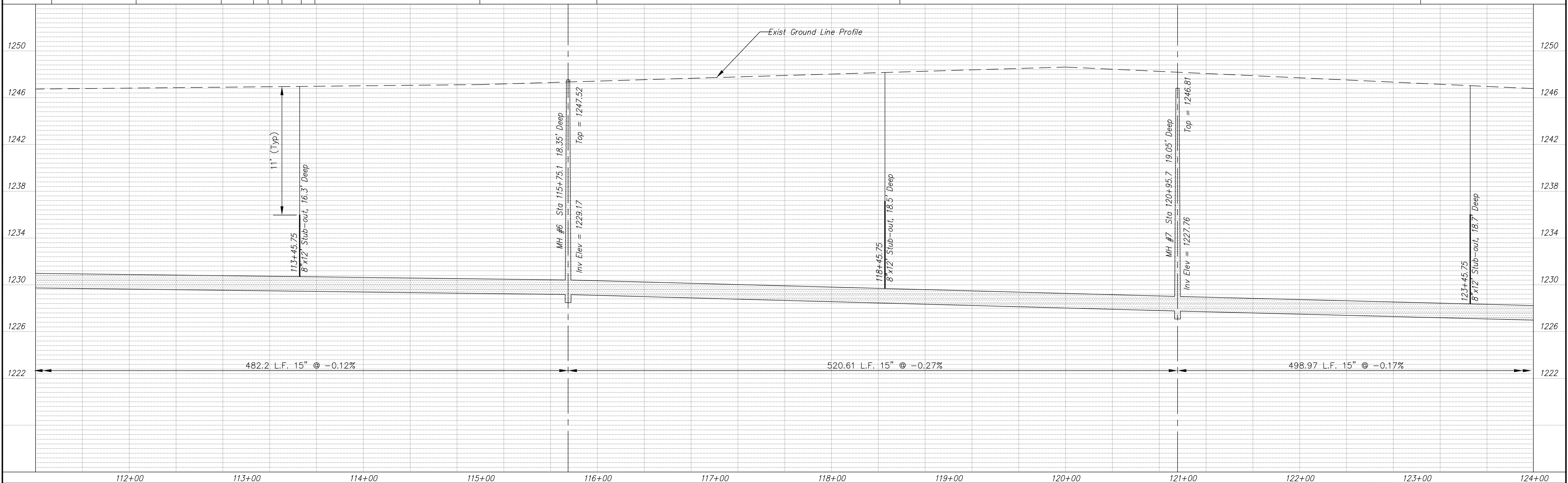
McArthur, North Roderick and Russell & Russell, Inc.  
340 N. Santa Fe Ave.  
Salina, Kansas  
67401  
E 1/2, SE 1/4, Except Rd. & Hwy ROW

Sta 120+95.7,  
MH #7;  
Rim Elev = 1246.81;  
Inv Elev = 1227.76

Sta 115+75.1,  
MH #6;  
Rim Elev = 1247.52;  
Inv Elev = 1229.17



**South Ninth Street  
Utility Improvements  
Aug 1999**



PROJECT TITLE: <b>Sanitary Sewer As-Built Drawing</b>										CONSTRUCTED BY: Stevens Contractors		SCALE: Plan: 1" = 40' Profile: Horiz, 1" = 40' Vert, 1" = 4'		DESIGN: KWD		CHECKED: KWD		CITY OF SALINA ENGINEERING DEPARTMENT 300 WEST ASH SALINA, KANSAS 67401 (913)826-7290		DATE: Aug 99		PROJ. NO.: 98-1134	
NO. REVISIONS										DATE		BY		NO. REVISIONS		DATE		BY		FILENAME: 612.dwg		SHEET: OF	