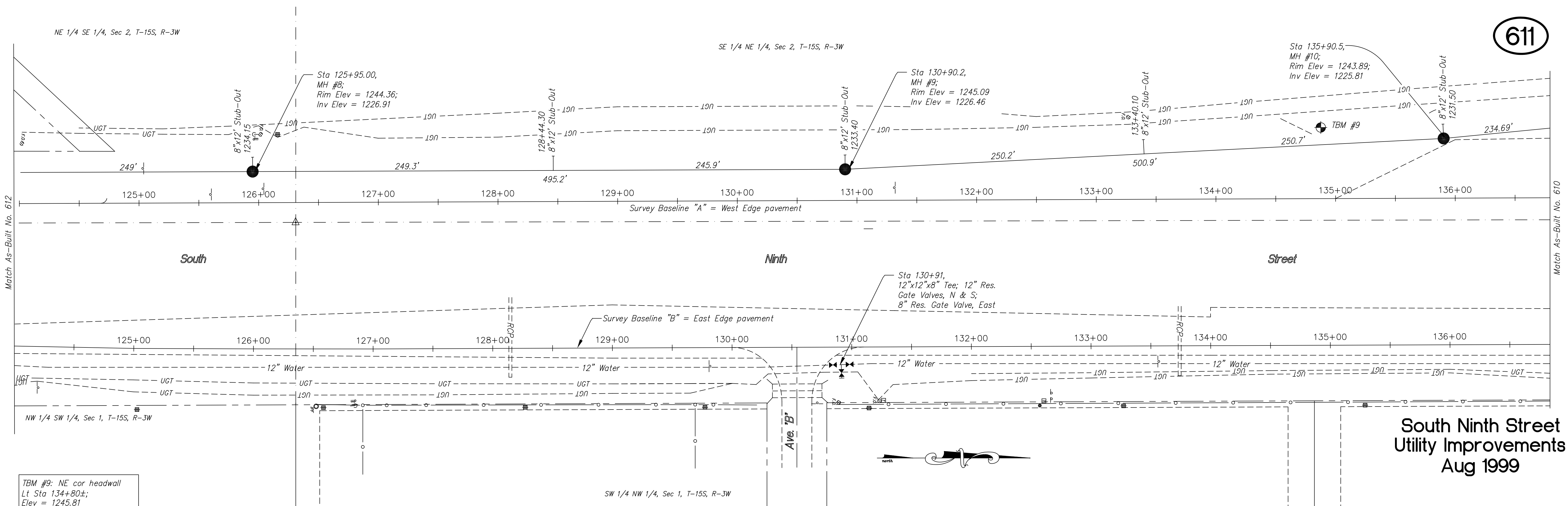


NE 1/4 SE 1/4, Sec 2, T-15S, R-3W

SE 1/4 NE 1/4, Sec 2, T-15S, R-3W

611



TBM #9: NE cor headwall  
Lt Sta 134+80±;  
Elev = 1245.81

South Ninth Street  
Utility Improvements  
Aug 1999



NO.	REVISIONS	DATE	BY

PROJECT TITLE  
**Sanitary Sewer As-Built Drawing**

CONSTRUCTED BY:  
Stevens Contractors

SCALE:  
Plan: 1" = 40'  
Profile: Horiz, 1" = 40'  
Vert, 1" = 4'

DESIGN: KWD  
CHECKED: KWD  
DRAWN: KWD  
APPROVED: KWD

CITY OF SALINA  
ENGINEERING DEPARTMENT  
300 WEST ASH SALINA, KANSAS 67401  
(913)826-7290

DATE: Aug 99  
PROJ. NO.: 98-1134  
FILENAME: 611r13.dwg  
SHEET: OF