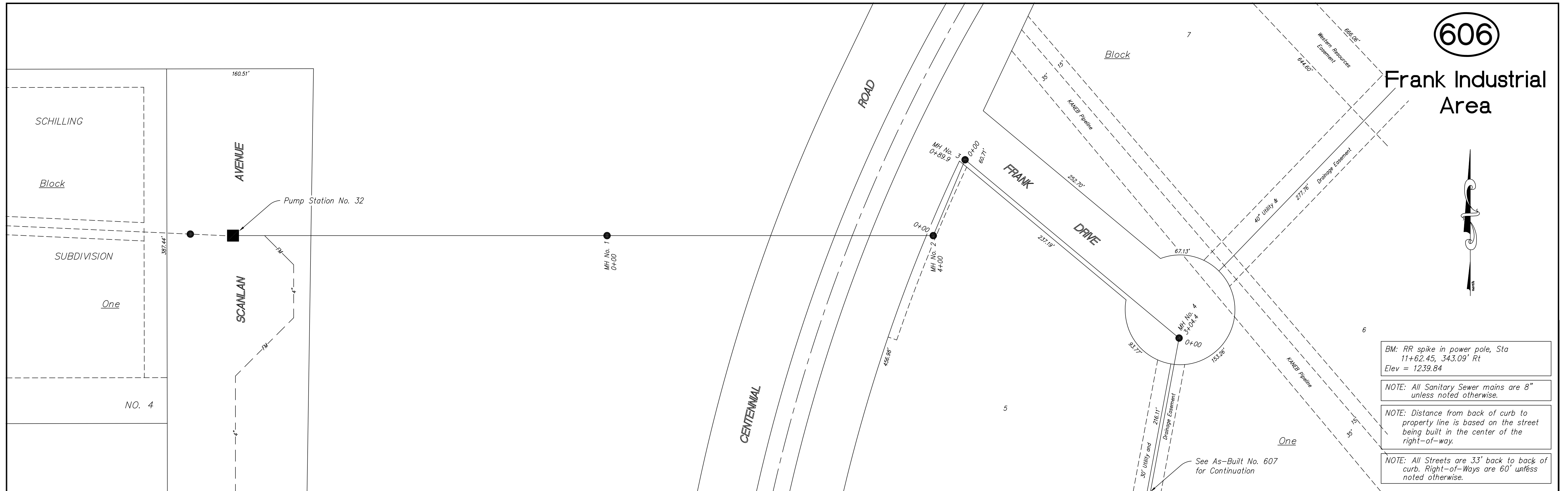
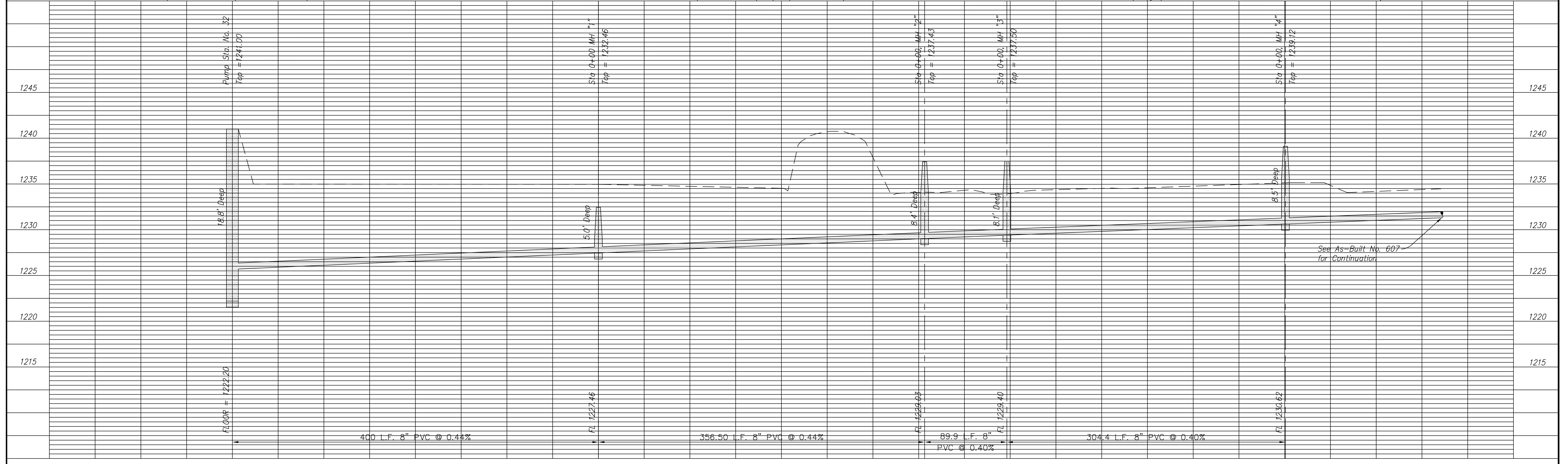


606

Frank Industrial Area



- BM: RR spike in power pole, Sta 11+62.45, 343.09' Rt
Elev = 1239.84
- NOTE: All Sanitary Sewer mains are 8" unless noted otherwise.
- NOTE: Distance from back of curb to property line is based on the street being built in the center of the right-of-way.
- NOTE: All Streets are 33' back to back of curb. Right-of-Ways are 60' unless noted otherwise.



PROJECT TITLE				CONSTRUCTED BY				SCALE				DESIGN				CHECKED				CITY OF SALINA				DATE				PROJ. NO.			
Sanitary Sewer As-Built Drawing				Smoky Hill Contractors				Plan: 1" = 50' Profile - Horizontal: 1" = 50' Vertical: 1" = 5'												ENGINEERING DEPARTMENT				Jan 2000				99-1192			
NO. REVISIONS				DATE BY				DRAWN				APPROVED				300 WEST ASH SALINA KANSAS 67401				FILENAME: 606.dwg				SHEET: OF:							