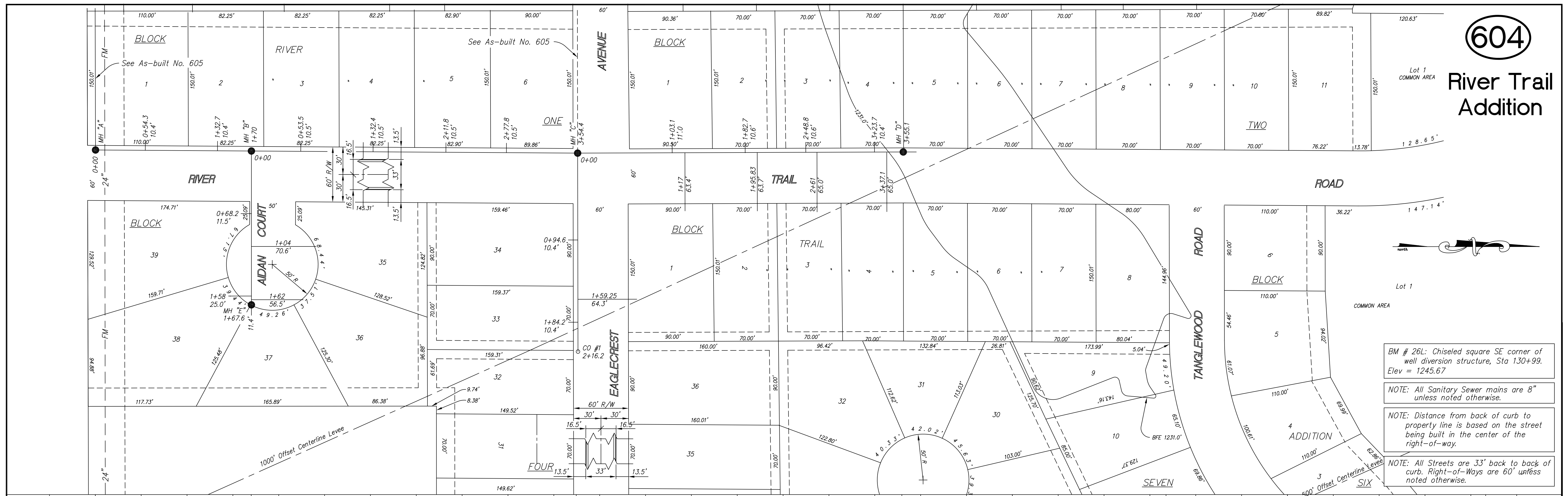


604

# River Trail Addition

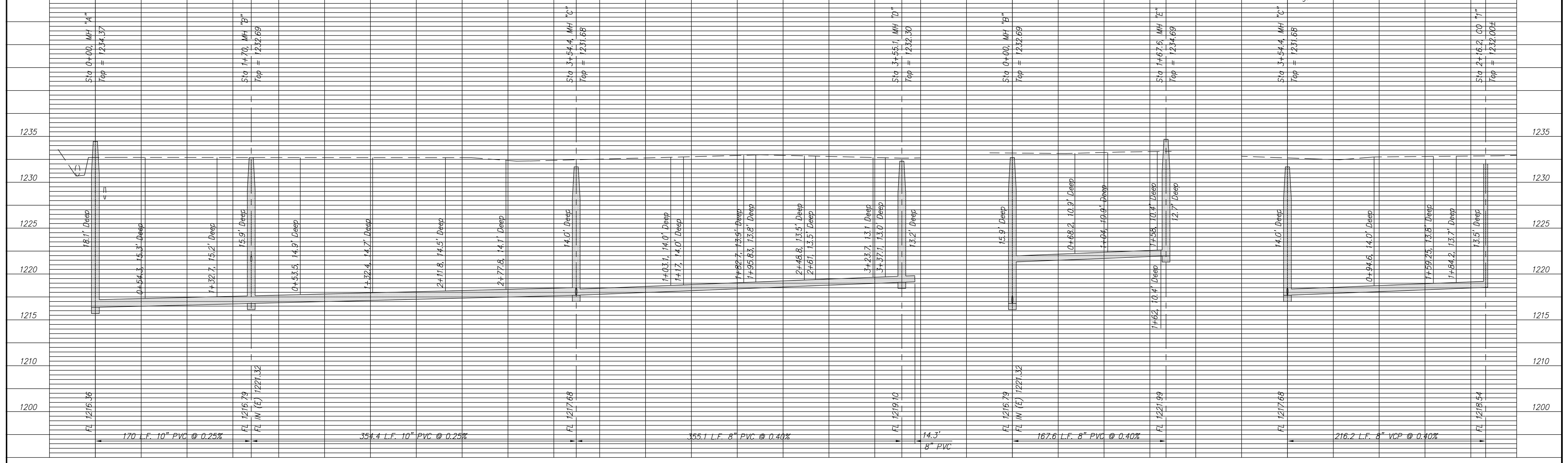


BM # 26L: Chiseled square SE corner of well diversion structure, Sta 130+99. Elev = 1245.67

NOTE: All Sanitary Sewer mains are 8" unless noted otherwise.

NOTE: Distance from back of curb to property line is based on the street being built in the center of the right-of-way.

NOTE: All Streets are 33' back to back of curb. Right-of-Ways are 60' unless noted otherwise.



PROJECT TITLE			CONSTRUCTED BY			SCALE			DESIGN			CHECKED			CITY OF SALINA			DATE			PROJ. NO.		
Sanitary Sewer As-Built Drawing			Smoky Hill Contractors			Plan: 1" = 50' Profile - Horizontal: 1" = 50' Vertical: 1" = 5'									ENGINEERING DEPARTMENT			Dec 99			99-1180		
NO. REVISIONS			DATE BY			DRAWN			APPROVED			FILENAME			SHEET			OF					
												604.dwg											