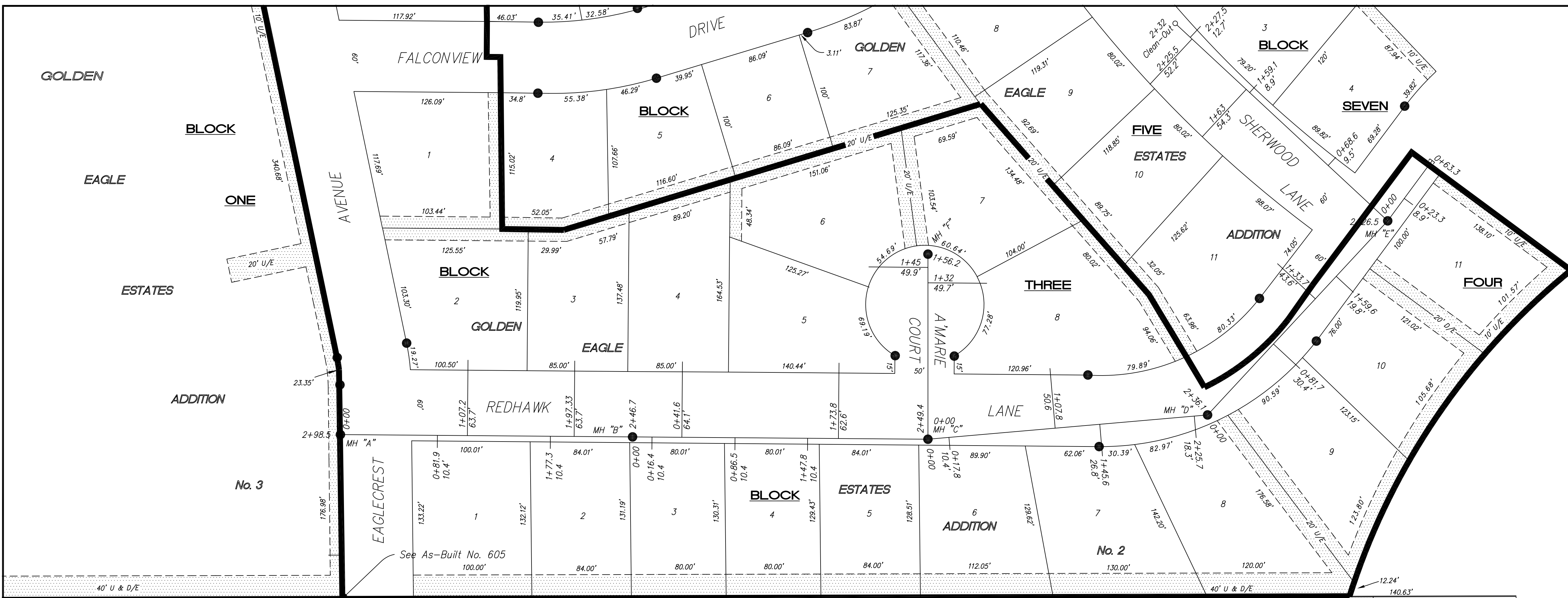
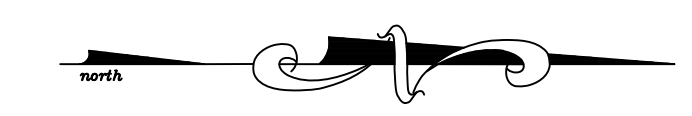
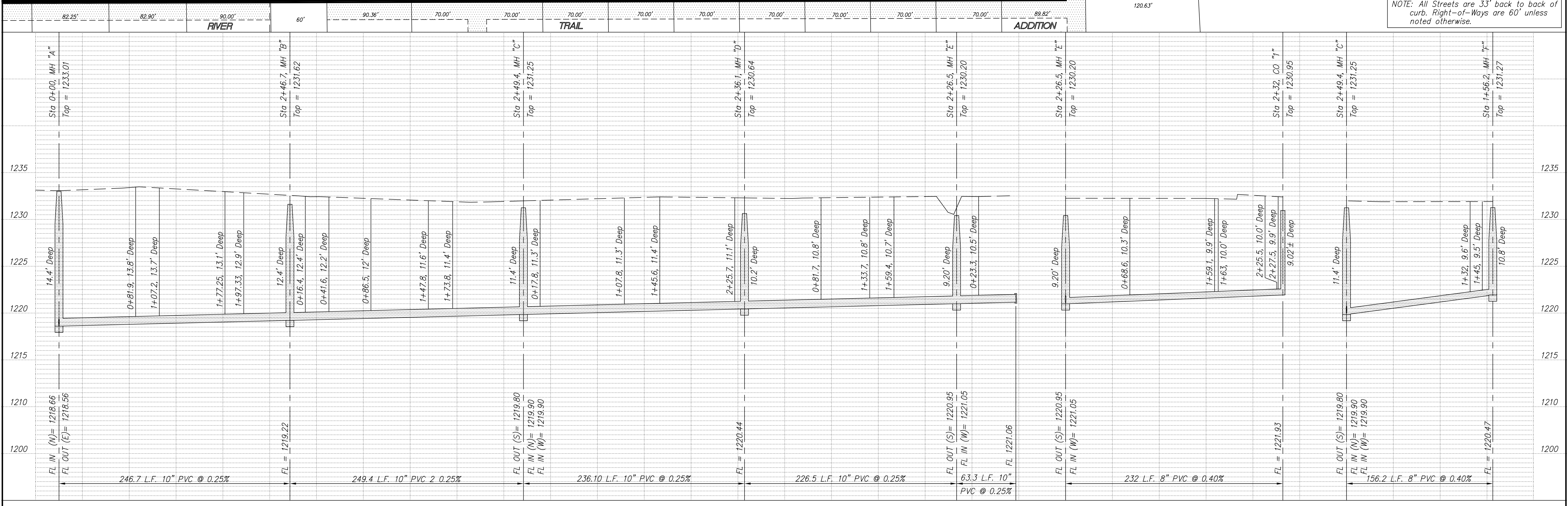


603

Golden Eagle Estates Addition



- BM : North nut @ top flange of fire hydrant @ Sw cor Falconview & Sherwood; Elev = 1234.37
- BM #93: "M" in Mueller, top fire hydrant at the NW cor Sequoia & Huntington; Elev = 1233.97
- NOTE: All Sanitary Sewer mains are 8" unless noted otherwise.
- NOTE: Distance from back of curb to property line is based on the street being built in the center of the right-of-way.
- NOTE: All Streets are 33' back to back of curb. Right-of-Ways are 60' unless noted otherwise.



NO.	REVISIONS	DATE	BY
1	Replat of Golden Eagle	Sept 04	KWD

PROJECT TITLE
Sanitary Sewer As-Built Drawing

CONTRACTOR Smoky Hill Contractors	DESIGN	CHECKED	CITY OF SALINA Dept. of Public Works Engineering Division	DATE	PROJ. NO.
SCALE As Shown	DRAWN	APPROVED		1 Dec 99	99-1180
			300 WEST ASH SALINA, KANSAS 67401 PH: 785.309.5725	FILENAME 603.dwg	SHEET OF