

600

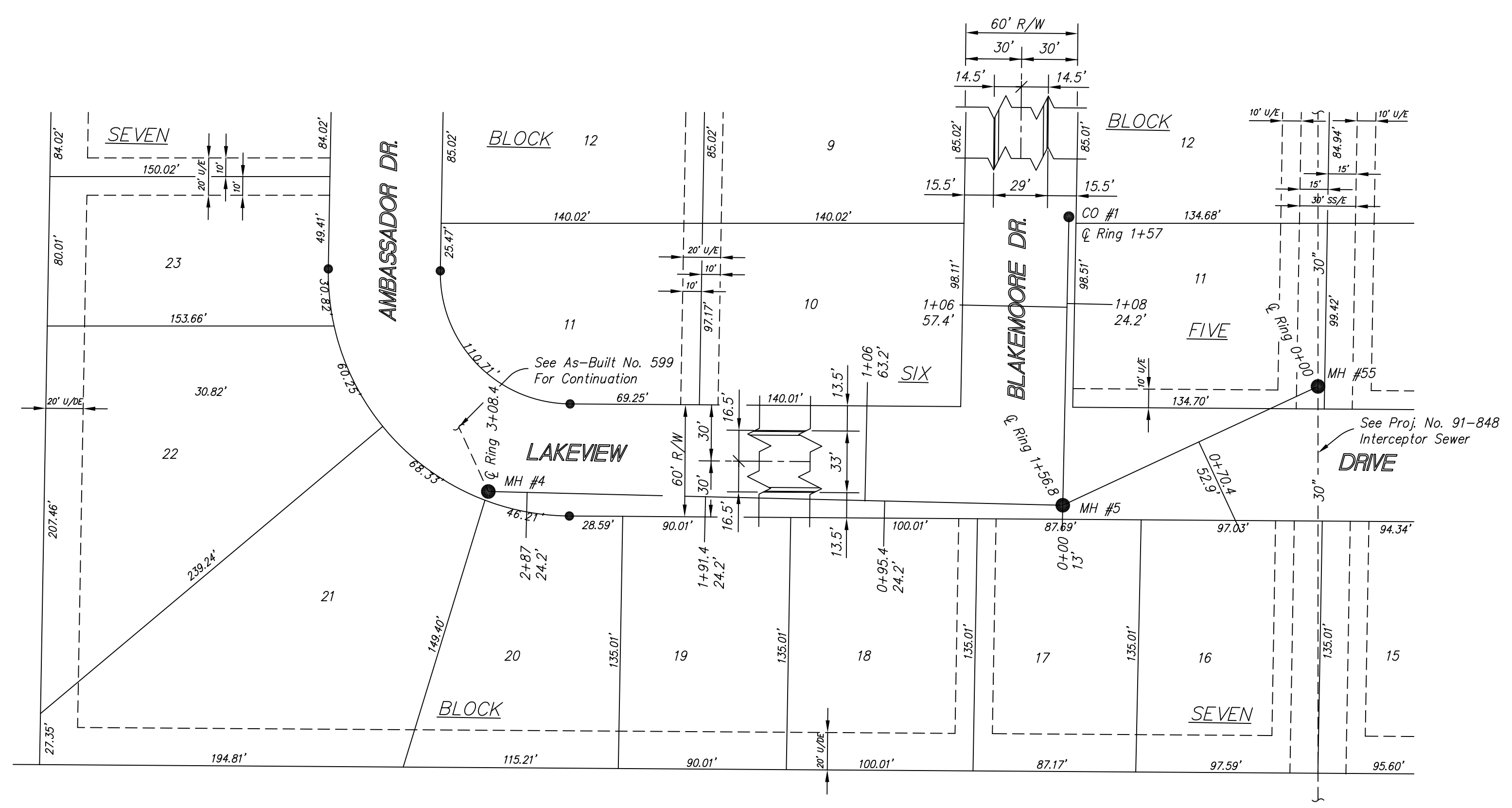
Eastview Addition - July 1999

BM #93: "m" in Mueller on Fire Hydrant NW cor Sequoia and Huntungton. Elev = 1233.97

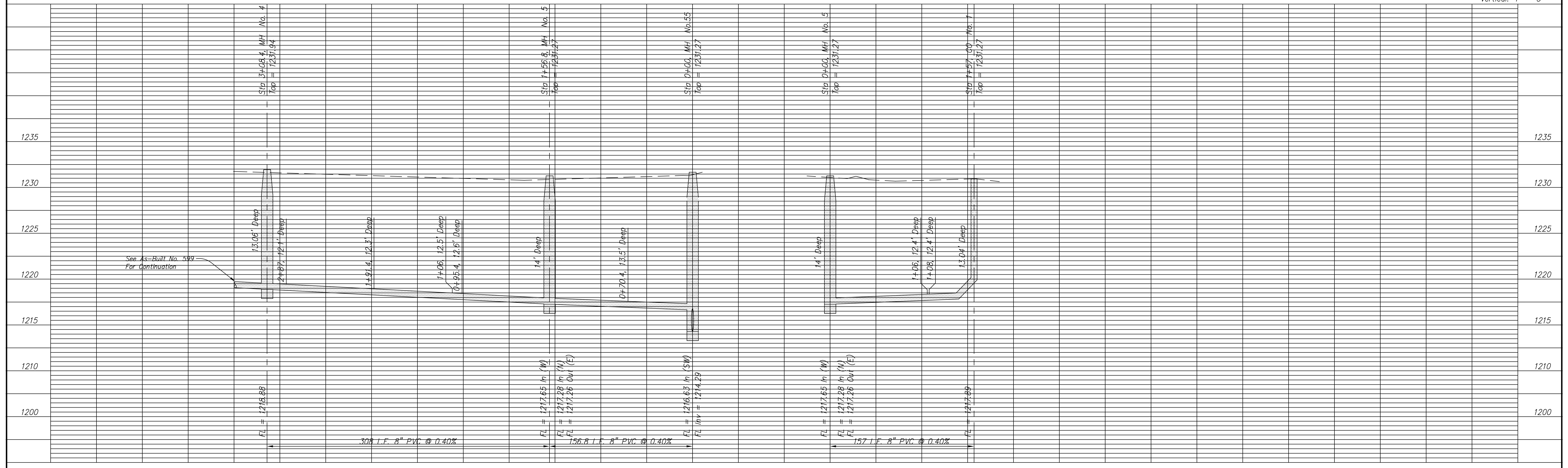
NOTE: All Sanitary Sewer mains are 8" unless noted otherwise.

NOTE: Distance from back of curb to property line is based on the street being built in the center of the right-of-way.

NOTE: All Streets are 33' back of curb Right-of-Ways are 60' unless noted otherwise.



SCALE:  
Plan: 1" = 50'  
Profile: -  
Horizontal: 1" = 50'  
Vertical: 1" = 5'



PROJECT TITLE: <b>Sanitary Sewer As-Built Drawing</b>				CONSTRUCTED BY: Smoky Hill Contractors		SCALE: As Shown		DESIGN: DRAWN:		CHECKED: APPROVED:		CITY OF SALINA ENGINEERING DEPARTMENT 300 WEST ASH SALINA, KANSAS 67401 (913)826-7290		DATE: 02 Aug 99		PROJ. NO.:			
NO.		REVISIONS		DATE		BY		NO.		REVISIONS		DATE		BY		SHEET:		OF:	
																600.dwg			