

599

Eastview Addition - July 1999



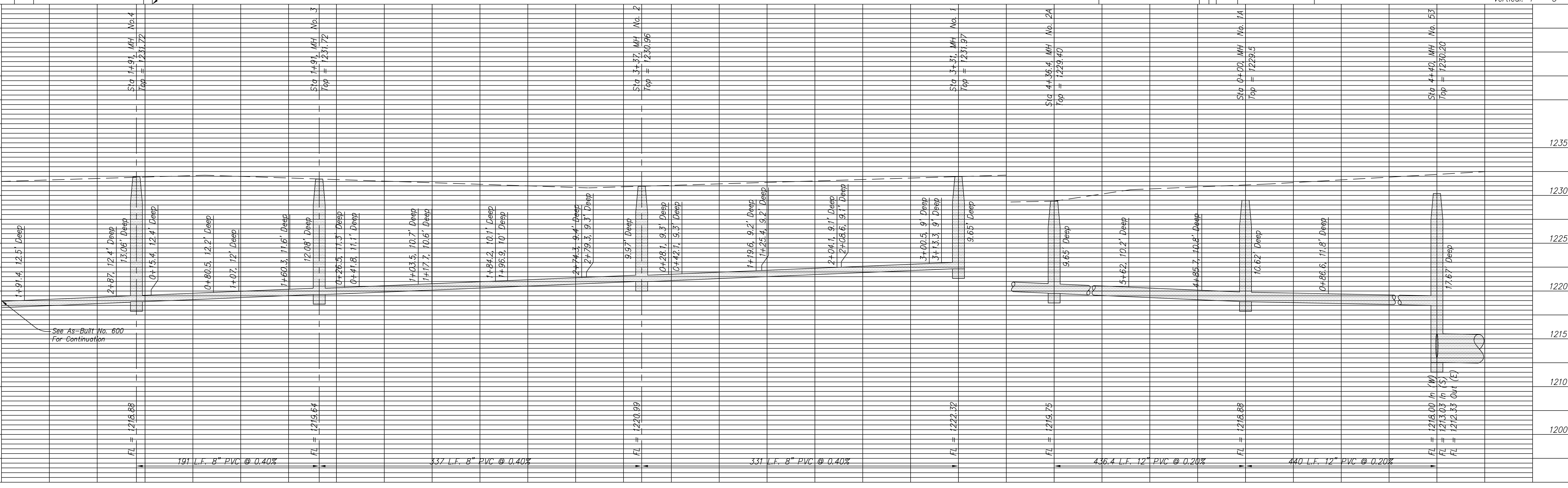
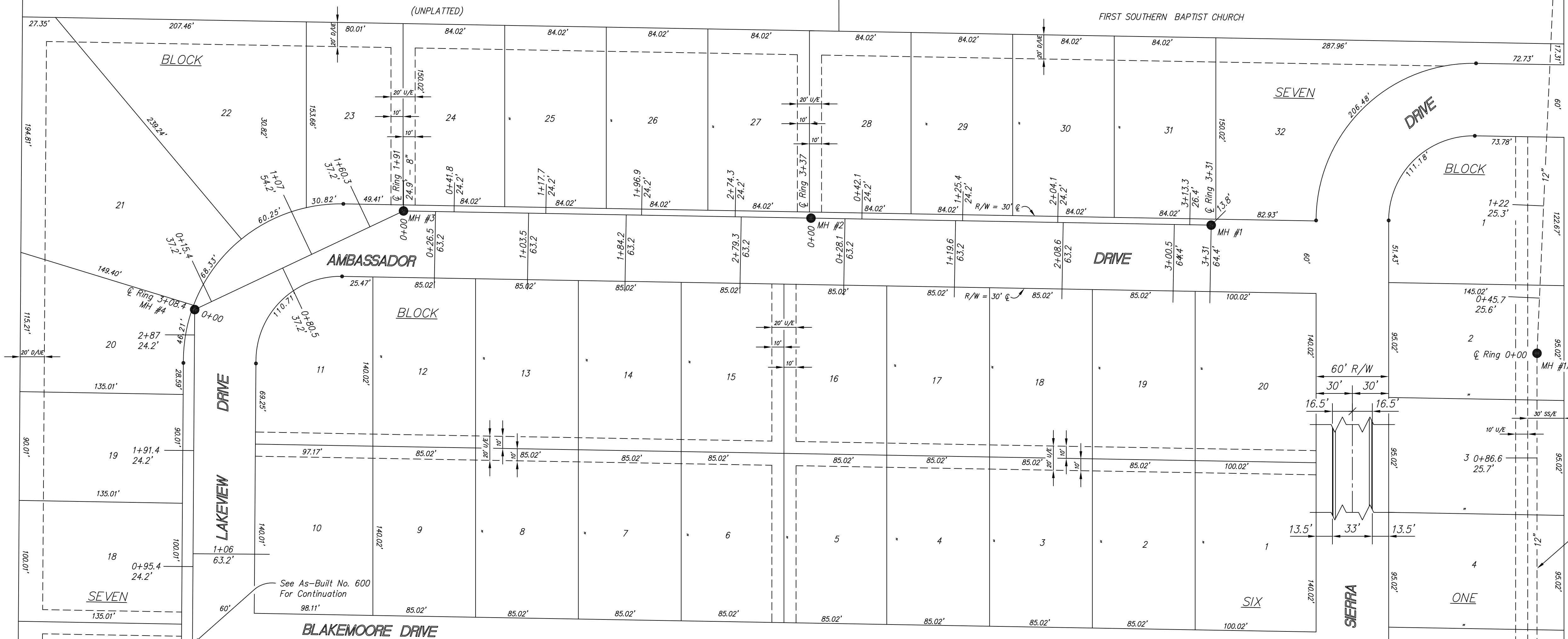
BM #93: "m" in Mueller on Fire Hydrant NW cor Sequoia and Huntungton. Elev = 1233.97

NOTE: All Sanitary Sewer mains are 8" unless noted otherwise.

NOTE: Distance from back of curb to property line is based on the street being built in the center of the right-of-way.

NOTE: All Streets are 33' back to back of curb Right-of-Ways are 60' unless noted otherwise.

SCALE:
Plan: 1" = 50'
Profile: -
Horizontal: 1" = 50'
Vertical: 1" = 5'



NO.	REVISIONS	DATE	BY

PROJECT TITLE:
Sanitary Sewer As-Built Drawing

CONSTRUCTED BY:
Smoky Hill Contractors

SCALE:
As Shown

DESIGN:
DRAWN:

CHECKED:
APPROVED:

CITY OF SALINA
ENGINEERING DEPARTMENT
300 WEST ASH SALINA, KANSAS 67401
(913)826-7290

DATE: 29 July 99
FILENAME: 599.dwg
PROJ. NO: 98-1139
SHEET: OF: