

597

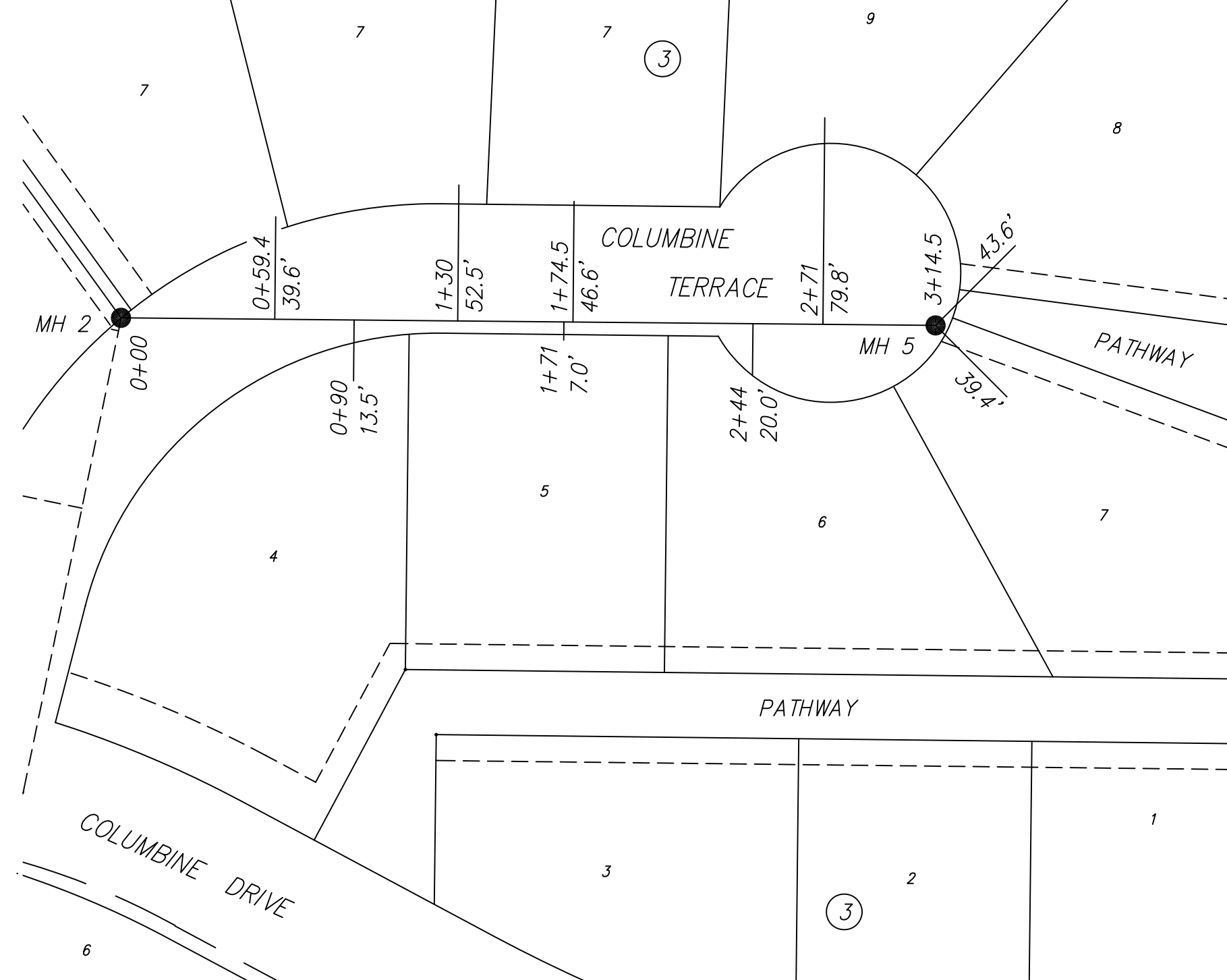
Mariposa Addition -
Phase II
Dec 1998



MARYMOUNT

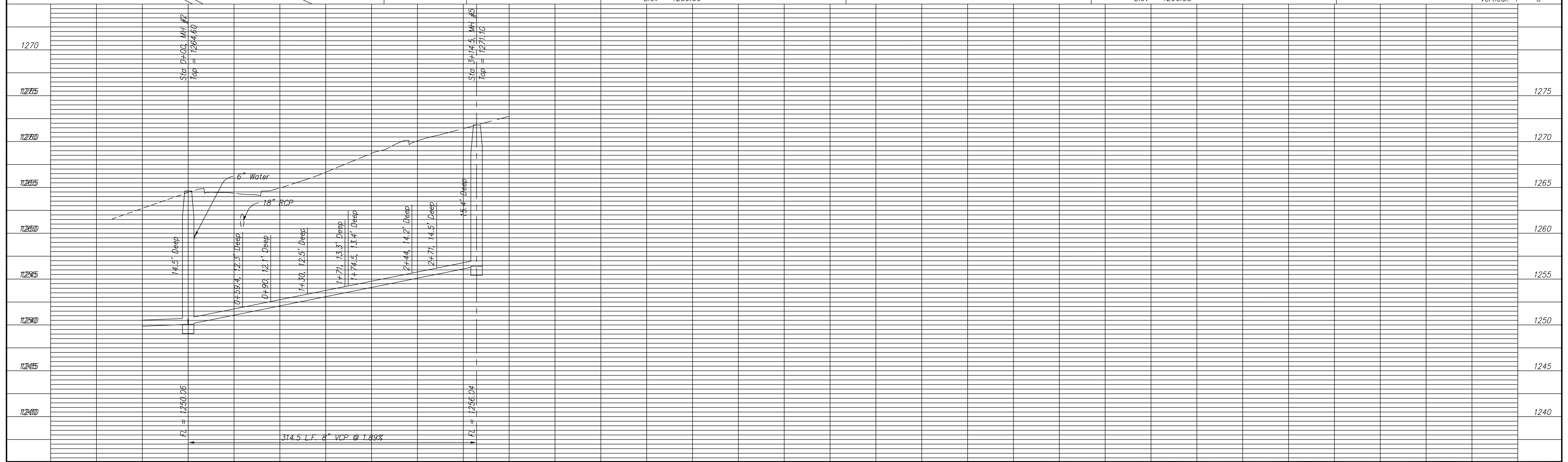
ROAD

PATHWAY



BM #369: "□" cut on SE corner of N headwall of driveway on W side of Marymount Rd. S of River Oaks limestone sign and N of driveway with stone headwall Elev = 1259.36
 BM #370: "□" cut on top of curb on E side of Columbine Cr. across fro C driveway at 1370 Columbine Cr Elev = 1281.56
 BM #371: Flange bolt in the middle of the word "Mueller" on W the E side of F.H., E side of Marymount Rd. 140' S of entrance to Mariposa Elev = 1260.55

SCALE:
Plan: 1" = 50'
Profile -
Horizontal: 1" = 50'
Vertical: 1" = 5'



PROJECT TITLE:					SCALE:		DESIGN:	CHECKED:	CITY OF SALINA ENGINEERING DEPARTMENT		DATE: 18 Feb 98	PROJ. NO: 98-11137
NO. REVISIONS DATE BY NO. REVISIONS DATE BY					DRAWN:		APPROVED:	300 WEST ASH SALINA, KANSAS 67401 (913)826-7290		FILENAME: 597.dwg	SHEET: OF:	