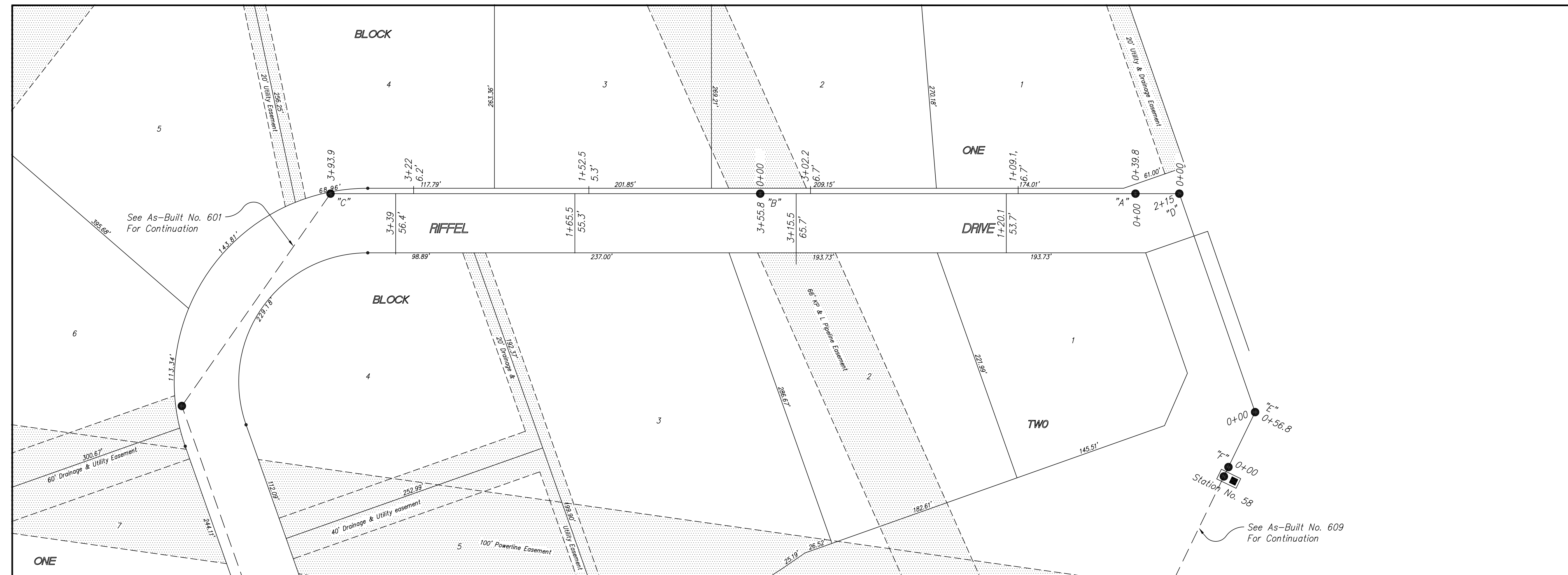
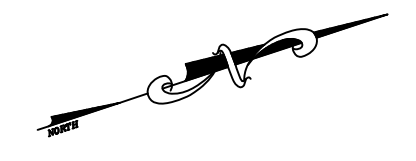


594

Riffel Addition
Oct 1977



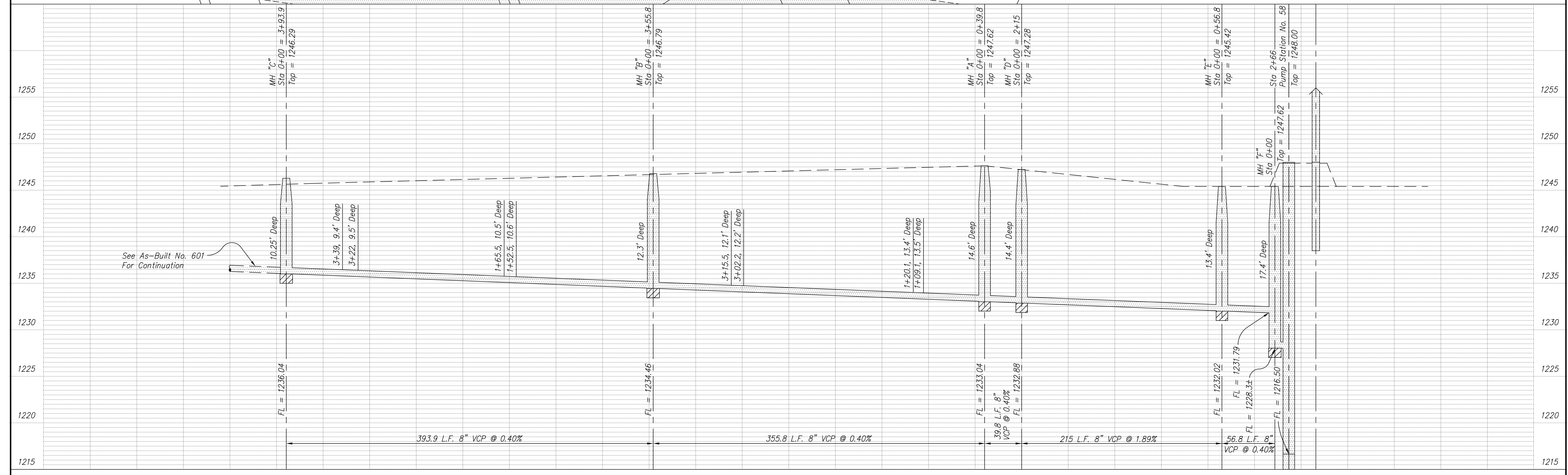
SCALE
 PLAN: 1" = 50'
 Horiz & Vert
 PROFILE: 1" = 50'
 Vert 1" = 10'

NOTE: Distance from back of curb to property line is based on the street being built in the center of the right-of-way.

NOTE: All Streets are 33' back to back of curb. Right-of-Ways are 60' unless noted otherwise.

BM: "M" in Mueller on FH west side of Huehl Circle, approximately 190' south of Dustin Rd. Elev = 1247.52

City of Salina BM #26: A chiseled square NW corner Schilling Road over Dry Creek; Elev = 1251.81



NO.	REVISIONS	DATE	BY
1	added Mh's A1 - A3	6/10/04	kwd

PROJECT TITLE
Sanitary Sewer As-Built Drawing

CONTRACTOR Stevens Cont.	DESIGN	CHECKED	CITY OF SALINA Dept. of Public Works Engineering Division 300 WEST ASH SALINA, KANSAS 67401 PH: 785.309.5725 FAX: 785.309.5713	DATE April 15, 1999	PROJ. NO.
SCALE As Shown	DRAWN	APPROVED		FILENAME 594.dwg	SHEET