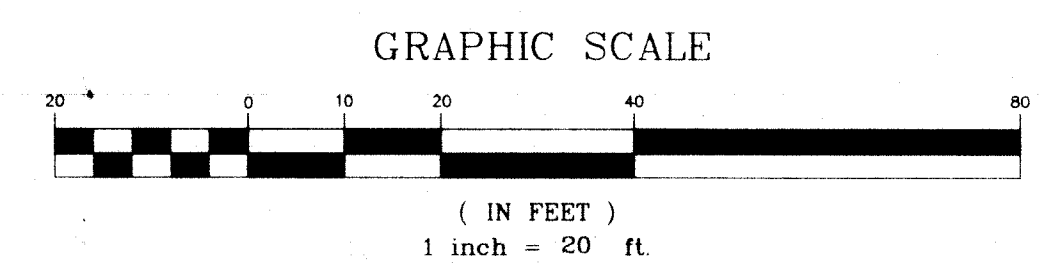
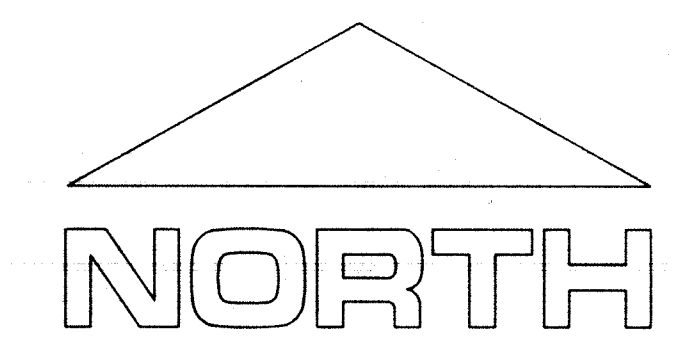


STREET
NINTH



NOTES:
All Sanitary Sewer Line shall be special trench Compacted.
BM # 1 - Square Cut on NE Corner Of Concrete of Existing Wet Well (Elev. - 1247.87)

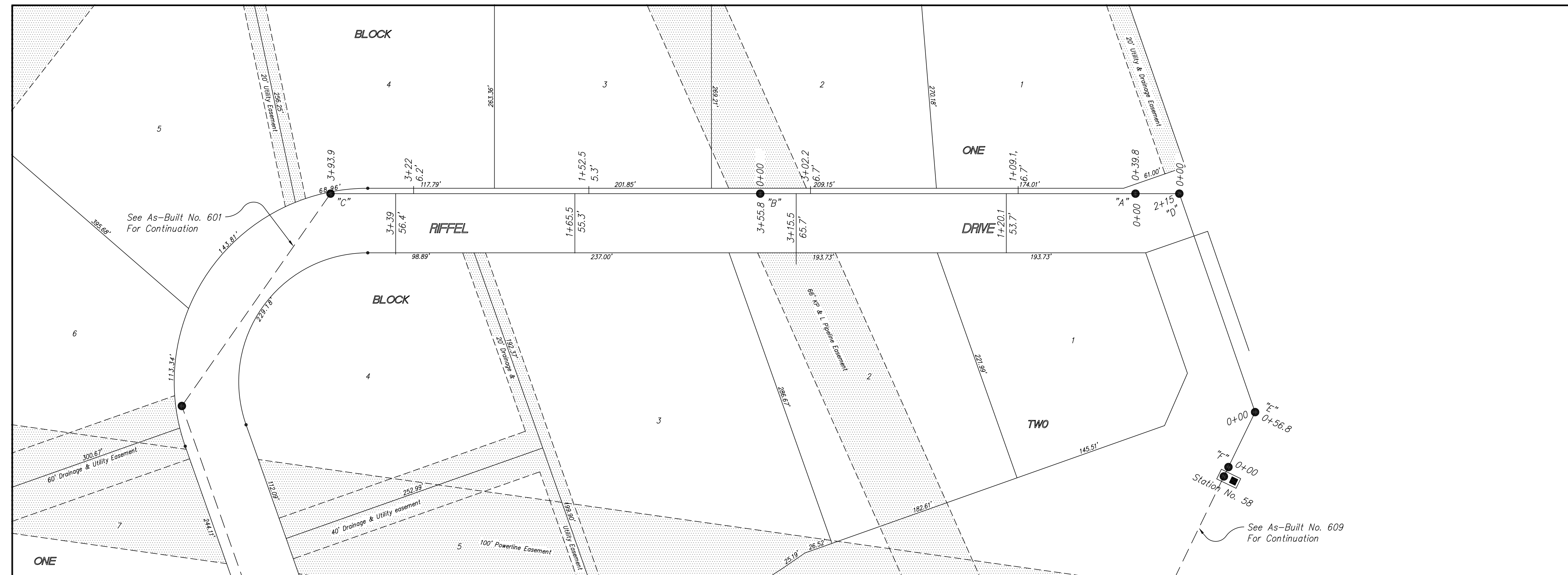
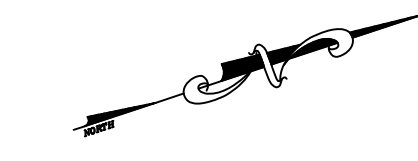
Quantities
8" Sanitary Sewer Pipeline - 309.10 l.f.
Type I Manholes - 3 ea.
Extra Manhole Depth - 27.53 l.f.
8" Pavement Removal & Replacement - 73.20 s.y.
Curb & Gutter Removal & Replacement - 20 l.f.
Trench & Backfill (14' - 16') - 309.1 l.f.
Connect to Exist. Manhole - 1 ea.
Traffic Control - 1 l.s.
Special Trench Compaction - 309.10 l.f.

c:\44362.dwg 10/19/98

PROJECT TITLE						SCALE		DESIGN	CHECKED	CITY OF SALINA		DATE	PROJ. NO.	
RELOCATION OF EXISTING SEWER LINE AT SCHILLING & RIFFEL						As Shown		DRAWN	APPROVED	ENGINEERING DEPARTMENT		March 2001	Private	
NO.	REVISIONS	DATE	BY	NO.	REVISIONS	DATE	BY			300 WEST ASH SALINA, KANSAS 67401		FILENAME	SHEET	OF
										(913)826-7290		Sch9thSSr13.dwg	1	1

594

Riffel Addition Oct 1977



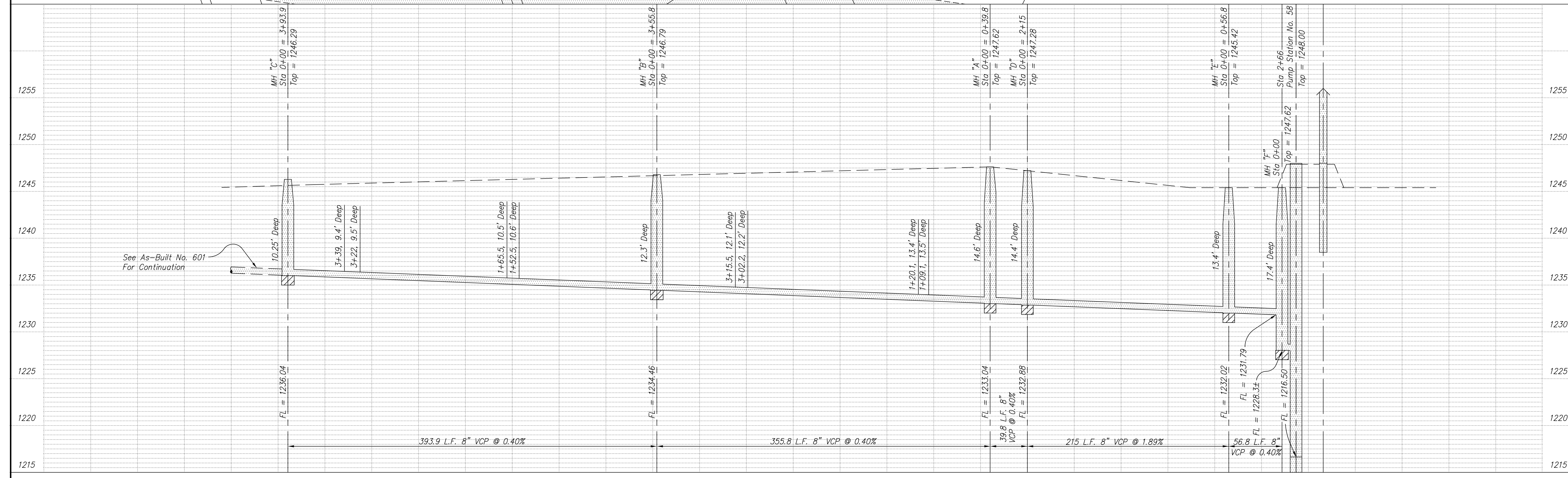
SCALE
 PLAN: 1" = 50'
 Horiz & Vert
 PROFILE: 1" = 50'
 Vert 1" = 10'

NOTE: Distance from back of curb to property line is based on the street being built in the center of the right-of-way.

NOTE: All Streets are 33' back to back of curb. Right-of-Ways are 60' unless noted otherwise.

BM: "M" in Mueller on FH west side of Huehl Circle, approximately 190' south of Dustin Rd. Elev = 1247.52

City of Salina BM #26: A chiseled square NW corner Schilling Road over Dry Creek; Elev = 1251.81



NO.	REVISIONS	DATE	BY
1	added Mh's A1 - A3	6/10/04	kwd

PROJECT TITLE
Sanitary Sewer As-Built Drawing

CONTRACTOR Stevens Cont.	DESIGN	CHECKED	CITY OF SALINA Dept. of Public Works Engineering Division	DATE April 15, 1999	PROJ. NO.
SCALE As Shown	DRAWN	APPROVED		FILENAME 594.dwg	SHEET: OF