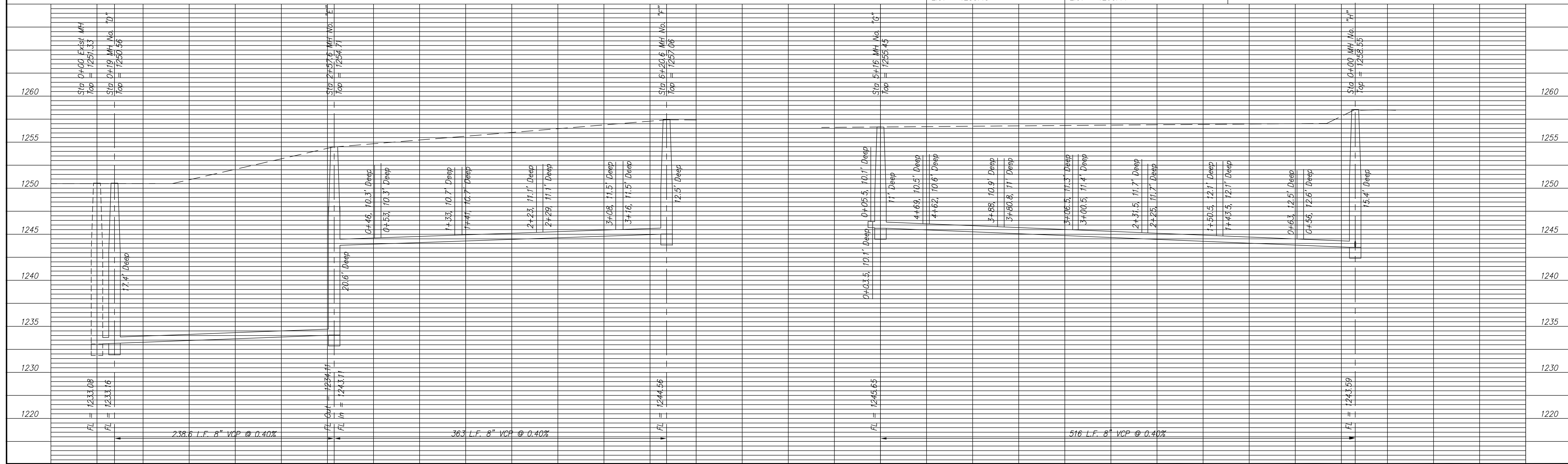


Woodland Hills
Estates Addition
Phase 11
Oct 1997

City of Salina Benchmark No. 194
Center cap bolt on fire hydrant
Southwest corner of Glen & Seitz;
Elev = 1253.45

City of Salina Benchmark No. 291
West/SW cap bolt on fire hydrant
Northeast corner of Deborah & Bradley;
Elev = 1260.44

SCALE:
Plan: 1" = 50'
Profile: -
Horizontal: 1" = 50'
Vertical: 1" = 5'



PROJECT TITLE:						SCALE:		DESIGN:		CHECKED:		CITY OF SALINA ENGINEERING DEPARTMENT		DATE:		PROJ. NO.:	
NO. REVISIONS						DRAWN:		APPROVED:		SALINA, KANSAS 67401		FILENAME:		SHEET:		OF:	
DATE BY NO. REVISIONS										300 WEST ASH							
										(913)826-7290							