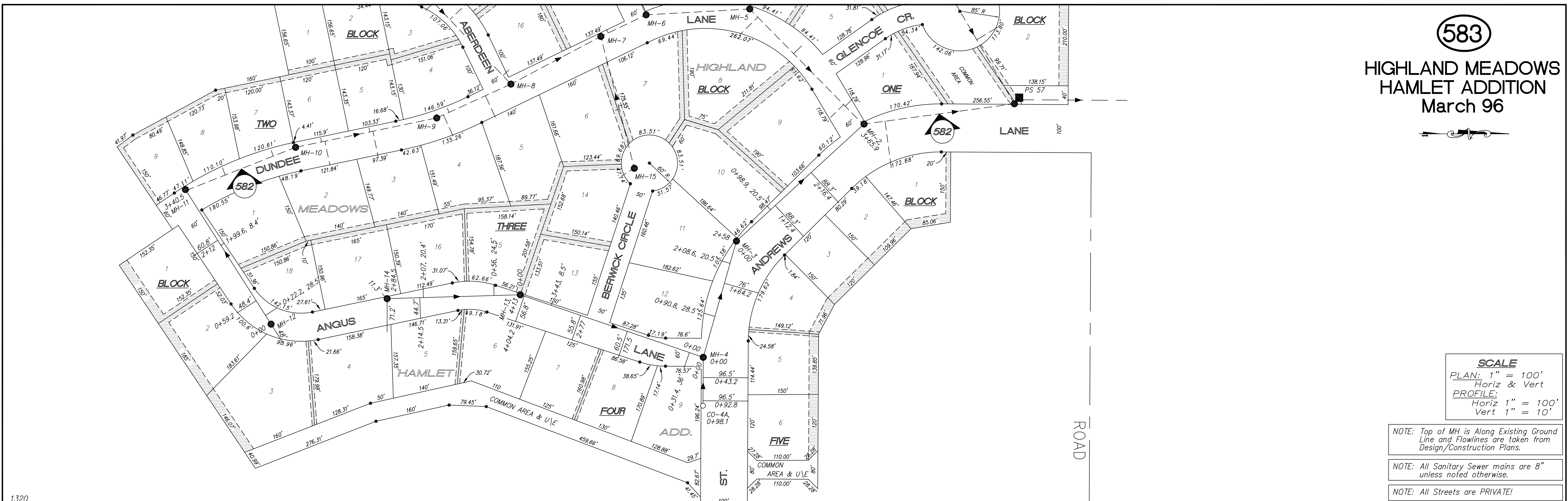
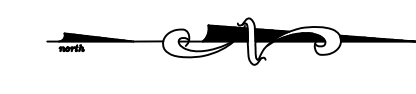


583

HIGHLAND MEADOWS HAMLET ADDITION March 96

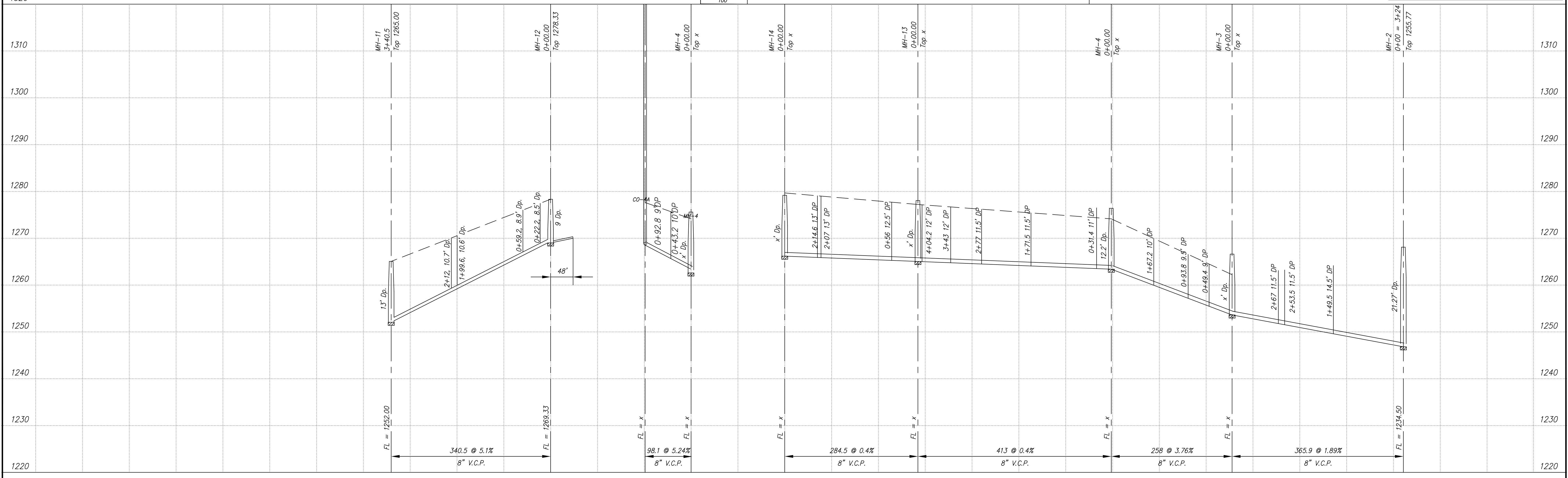


SCALE
 PLAN: 1" = 100'
 Horiz & Vert
 PROFILE:
 Horiz 1" = 100'
 Vert 1" = 10'

NOTE: Top of MH is Along Existing Ground Line and Flowlines are taken from Design/Construction Plans.

NOTE: All Sanitary Sewer mains are 8" unless noted otherwise.

NOTE: All Streets are PRIVATE!



| NO. | REVISIONS | DATE | BY |
|-----|-----------|------|----|
| | | | |

PROJECT TITLE:
Sanitary Sewer As-Built Drawing

| | | | | | |
|------------------------------|-------------|---------------|---|----------------------|---------------|
| CONTRACTOR: Stevens Cont. | DESIGN: | CHECKED: | CITY OF SALINA ENGINEERING DEPARTMENT 300 WEST ASH SALINA, KANSAS 67401 PH: 785.309.5725 FAX: 785.309.5713 | DATE: Dec 96 | PROJ. NO.: |
| SCALE: As Shown | DRAWN: | APPROVED: | | FILENAME: 583.dwg | SHEET: OF: |