

581

VALLEY VIEW ESTATES ADDITION July 1996

SCALE
 PLAN: 1" = 100'
 Horiz & Vert
 PROFILE: 1" = 100'
 Horiz 1" = 100'
 Vert 1" = 10'

NOTE: All Streets are 29' back to back of curb. Right-of-Ways are 60' unless noted otherwise.

NOTE: Distance from back of curb to property line is based on the street being built in the center of the right-of-way.

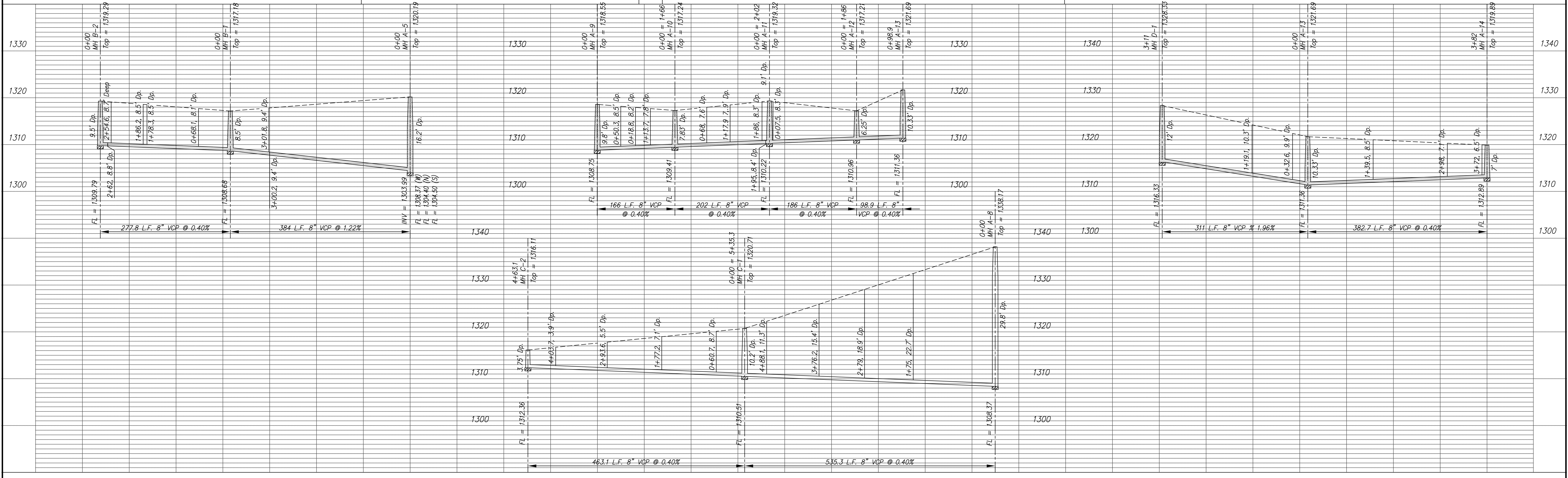
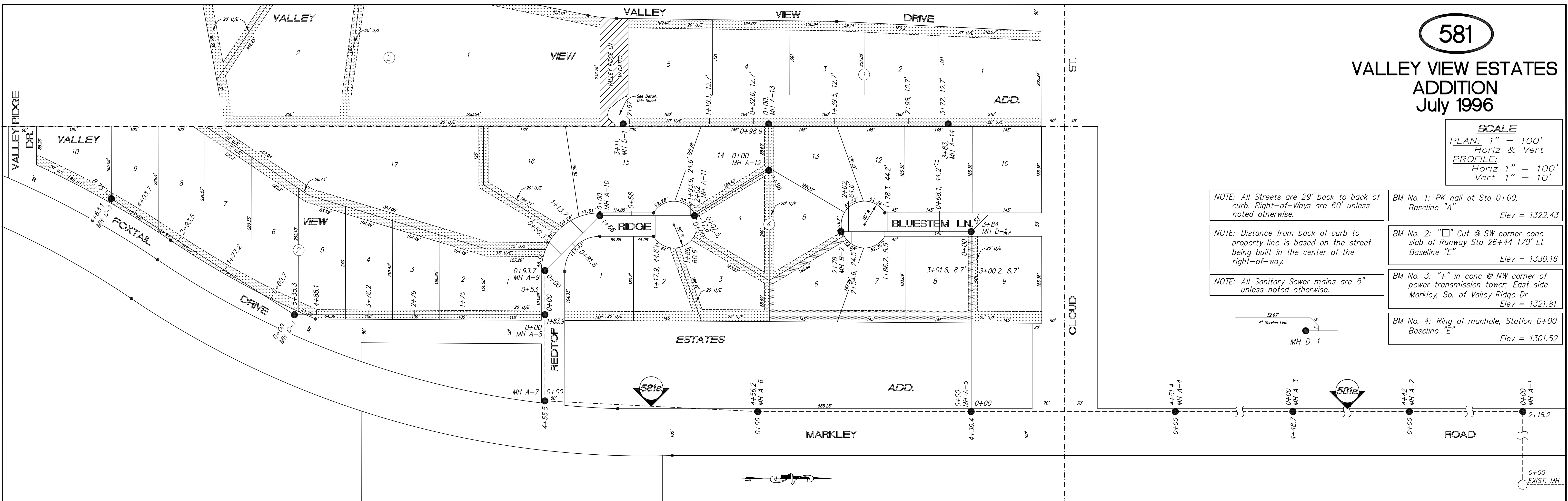
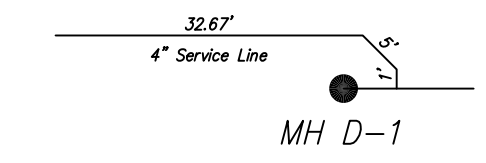
NOTE: All Sanitary Sewer mains are 8" unless noted otherwise.

BM No. 1: PK nail at Sta 0+00, Baseline "A" Elev = 1322.43

BM No. 2: "□" Cut @ SW corner conc slab of Runway Sta 26+44 170' Lt Baseline "E" Elev = 1330.16

BM No. 3: "+" in conc @ NW corner of power transmission tower; East side Markley, So. of Valley Ridge Dr Elev = 1321.81

BM No. 4: Ring of manhole, Station 0+00 Baseline "E" Elev = 1301.52



NO.	REVISIONS	DATE	BY
1	Added info left off on original p/p	7/9/03	KWD

PROJECT TITLE: **Sanitary Sewer As-Built Drawing**

CONTRACTOR: Stevens Const, Inc	DESIGN: [Blank]	CHECKED: [Blank]	CITY OF SALINA ENGINEERING DEPARTMENT 300 WEST ASH SALINA, KANSAS 67401 PH: 785.309.5725 FAX: 785.309.5713	DATE: May 96	PROJ. NO.: 95-938
SCALE: As Shown	DRAWN: [Blank]	APPROVED: [Blank]		FILENAME: 581	SHEET: 581