

580b

GICO ADDITION  
Phase 1  
MAY 1996



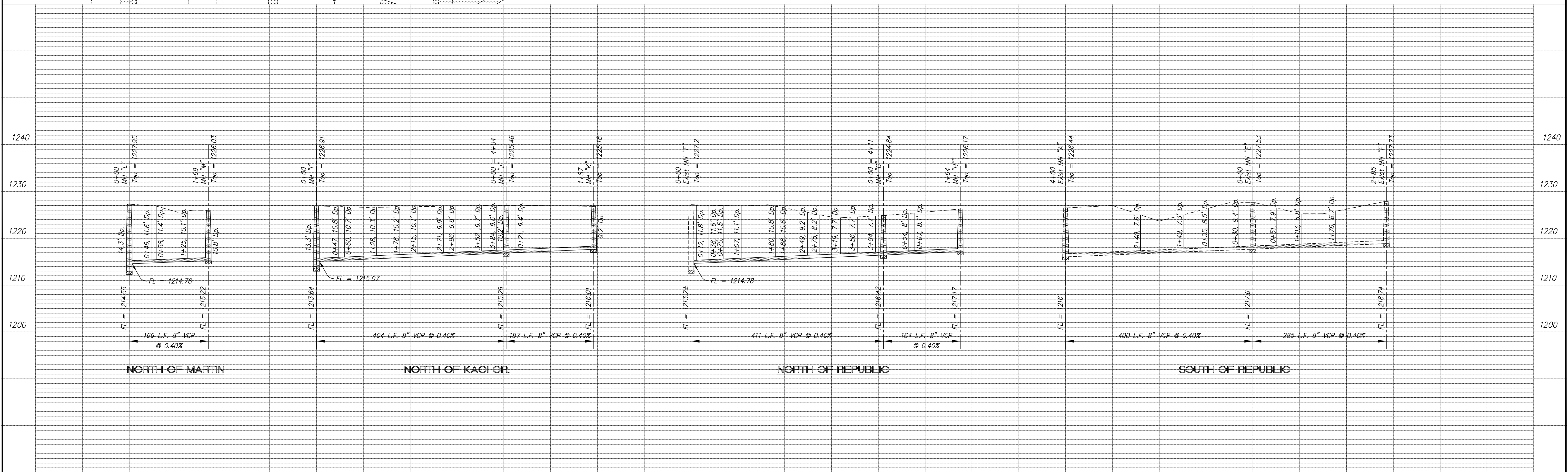
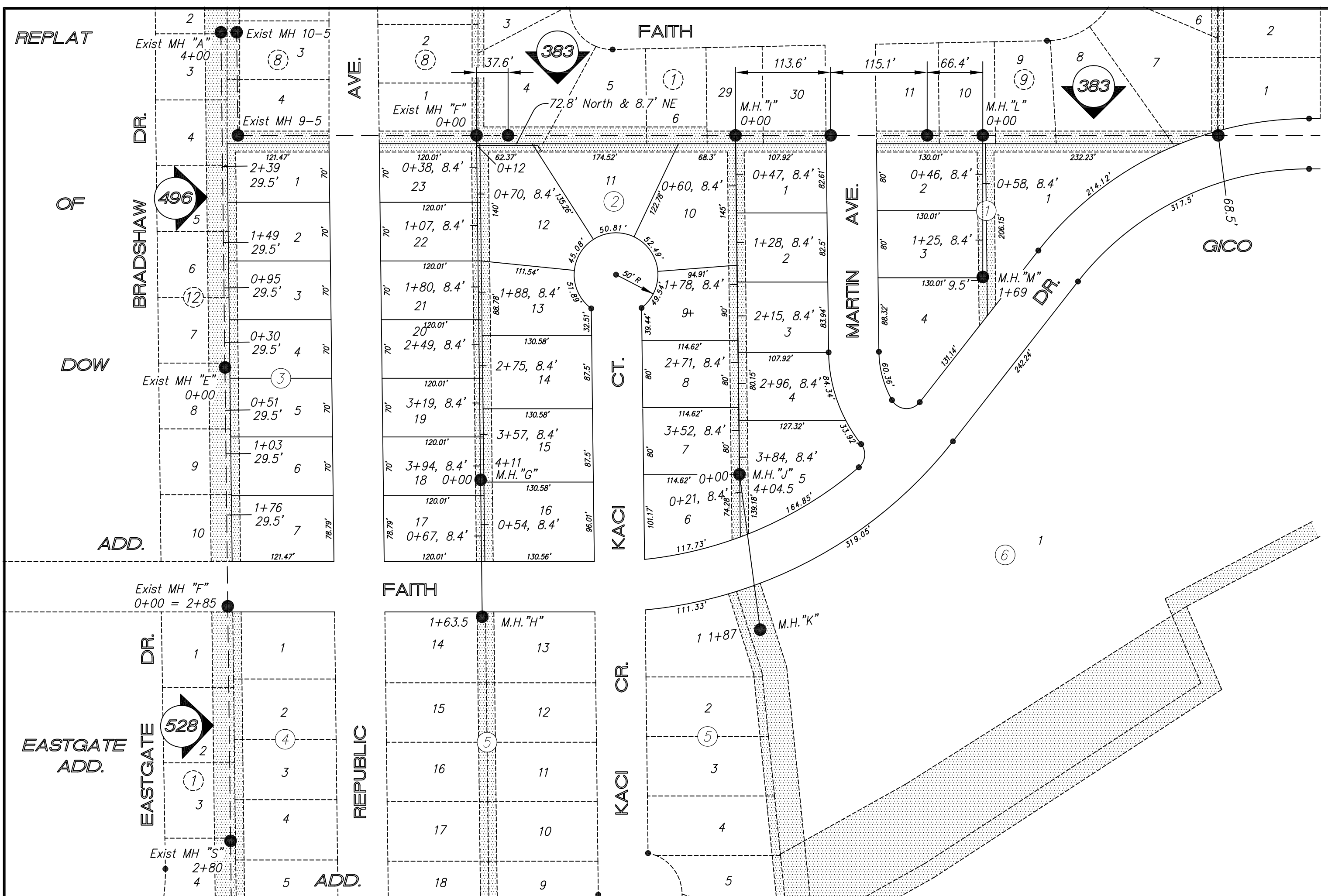
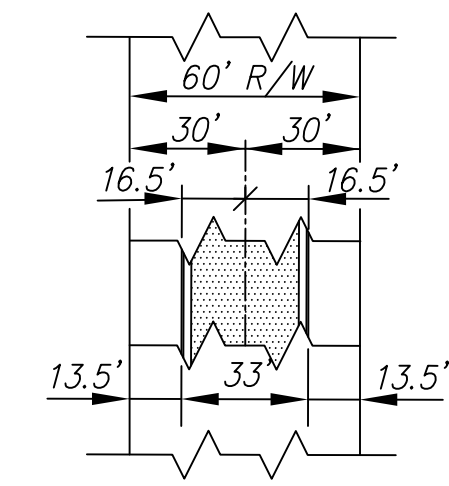
**SCALE**  
PLAN: 1" = 100'  
Horiz & Vert  
PROFILE:  
Horiz 1" = 100'  
Vert 1" = 10'

Survey BM No. 1: South cap bolt on fire hydrant NW corner Faith & McAdams streets.  
Elev = 1229.43

NOTE: All Sanitary Sewer mains are 8" unless noted otherwise.

NOTE: Distance from back of curb to property line is based on the street being built in the center of the right-of-way.

NOTE: All Streets are 33' back to back of curb. Right-of-Ways are 60' unless noted otherwise.



NO.	REVISIONS	DATE	BY
1	Added info left off on original p/p	7/9/03	KWD

PROJECT TITLE:  
**Sanitary Sewer As-Built Drawing**

CONTRACTOR:  
Stevens Const, Inc

SCALE:  
As Shown

DESIGN:  
CHECKED:  
APPROVED:

**CITY OF SALINA**  
ENGINEERING DEPARTMENT  
300 WEST ASH SALINA, KANSAS 67401  
PH: 785.309.5725 FAX: 785.309.5713

DATE:  
May 96

PROJ. NO.:  
95-938

FILENAME:  
580b.dwg

SHEET:  
580b