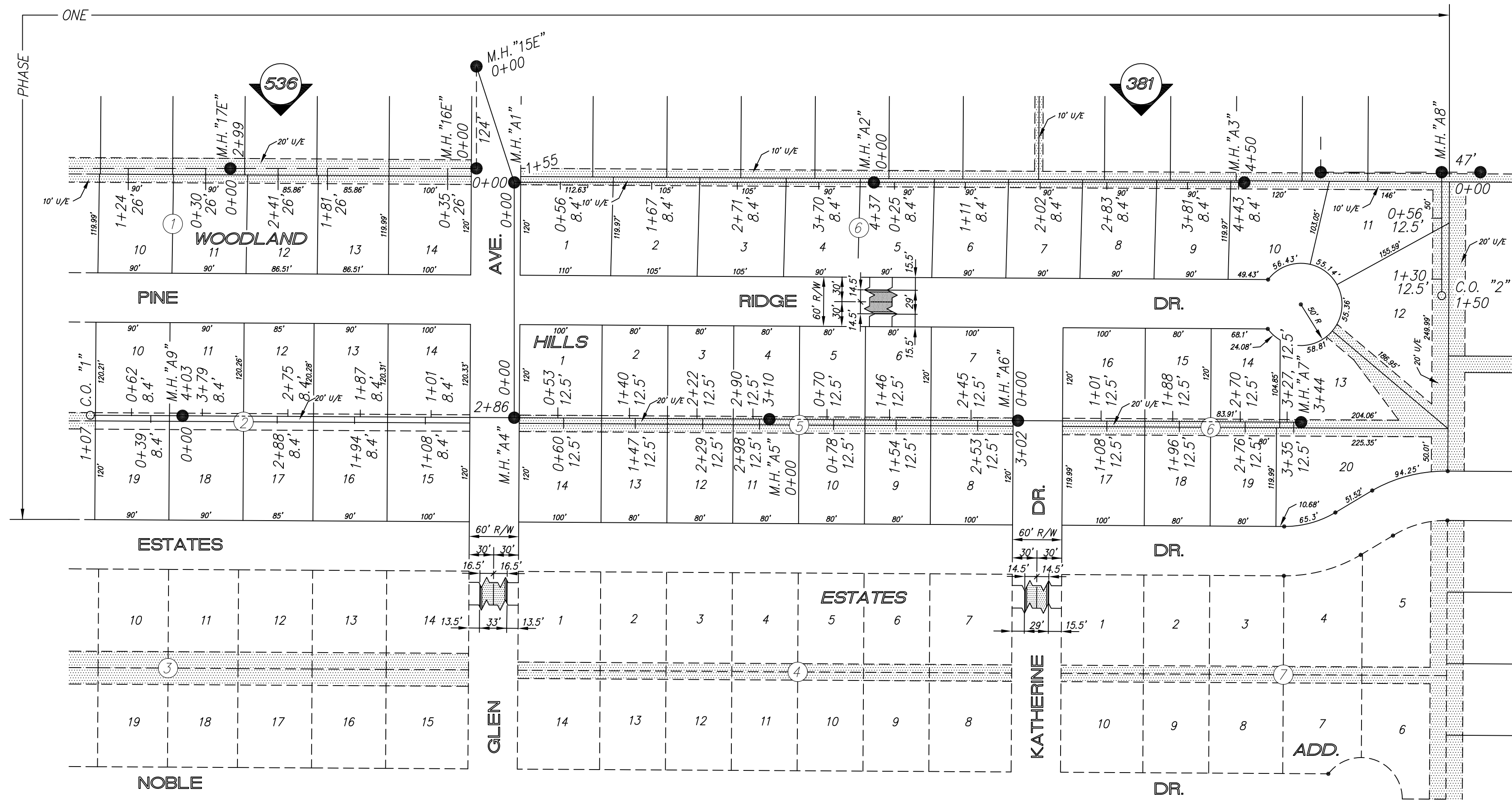


580a

WOODLAND HILLS ESTATES  
ADDITION - Phase 1  
MAY 1996



**SCALE**  
PLAN: 1" = 100'  
Horiz & Vert  
PROFILE: 1" = 100'  
Vert 1" = 10'

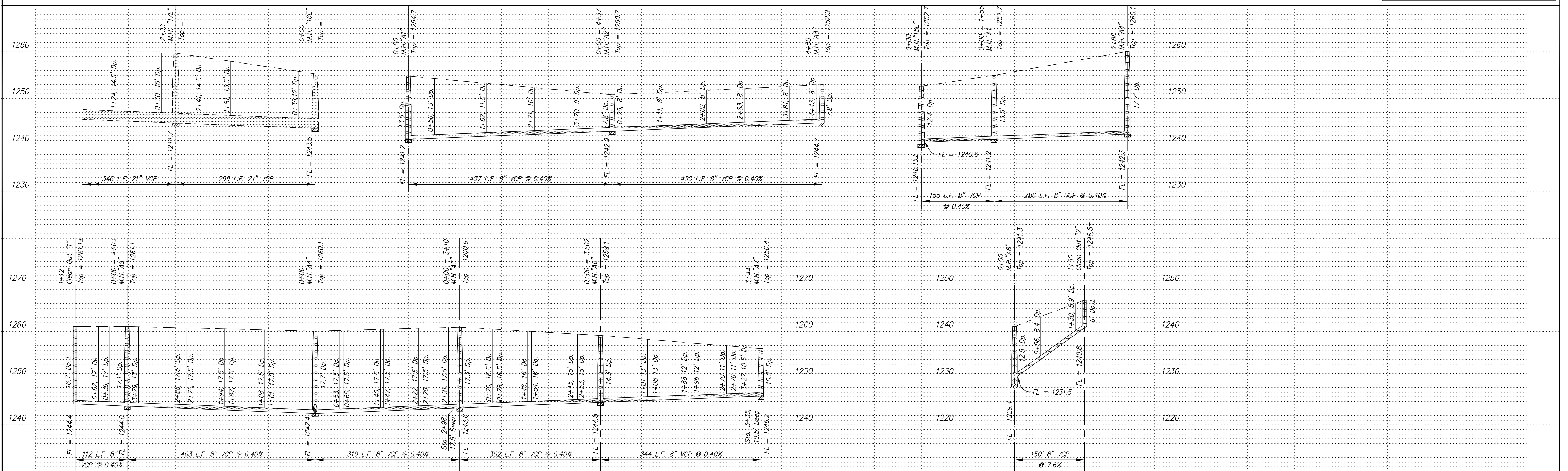
City BM No. 164: Center cap bolt on fire hydrant SW corner Glen & Seitz streets.  
Elev = 1253.45

City BM No. 291: W/SW cap bolt on fire hydrant NE corner Deborah & Bradley streets.  
Elev = 1260.44

NOTE: All Sanitary Sewer mains are 8" unless noted otherwise.

NOTE: Distance from back of curb to property line is based on the street being built in the center of the right-of-way.

NOTE: All Streets are 33' back to back of curb. Right-of-Ways are 60' unless noted otherwise.



NO.	REVISIONS	DATE	BY
1	Added info left off on original d/p	7/9/03	KWD

PROJECT TITLE  
**Sanitary Sewer As-Built Drawing**

CONTRACTOR Stevens Const, Inc	DESIGN	CHECKED	CITY OF SALINA ENGINEERING DEPARTMENT 300 WEST ASH SALINA, KANSAS 67401 PH: 785.309.5725 FAX: 785.309.5713	DATE May 96	PROJ. NO. 95-938
SCALE As Shown	DRAWN	APPROVED		FILENAME 580a	SHEET OF