

577

HOLIDAY RESORT ADDITION
Feb 1995



SCALE

PLAN: 1" = 50'
Horiz & Vert
PROFILE: 1" = 50'
Horiz 1" = 50'
Vert 1" = 10'

NOTE: Distance from back of curb to property line is based on the street being built in the center of the right-of-way.

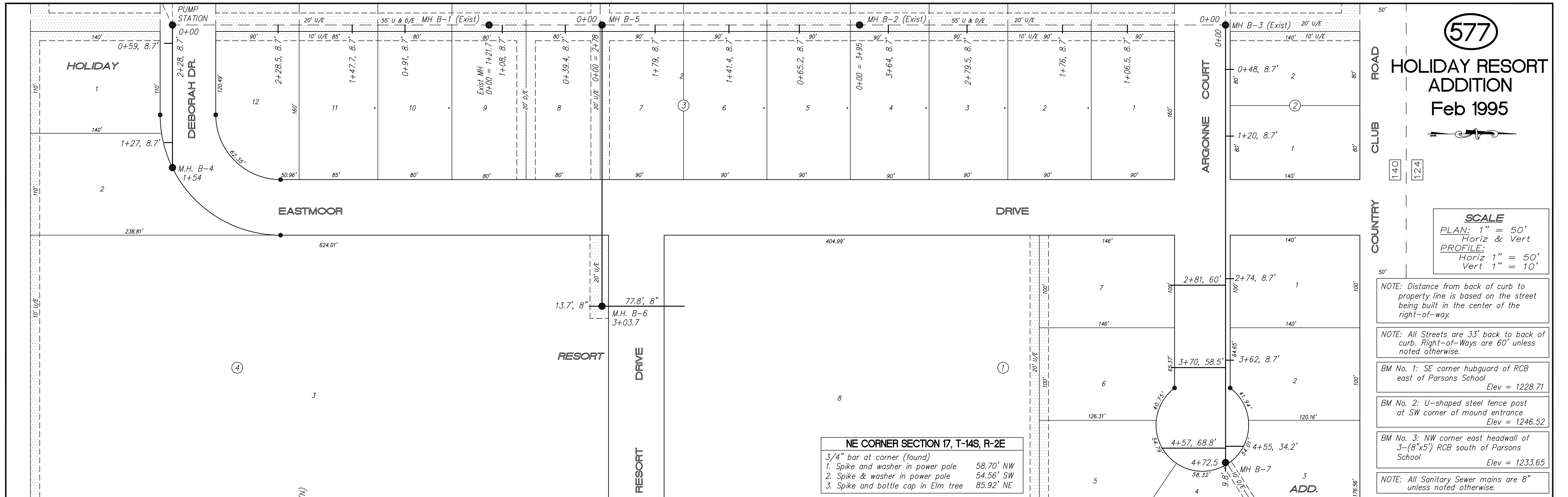
NOTE: All Streets are 33' back to back of curb. Right-of-Ways are 60' unless noted otherwise.

BM No. 1: SE corner hubguard of RCB east of Parsons School
Elev = 1228.71

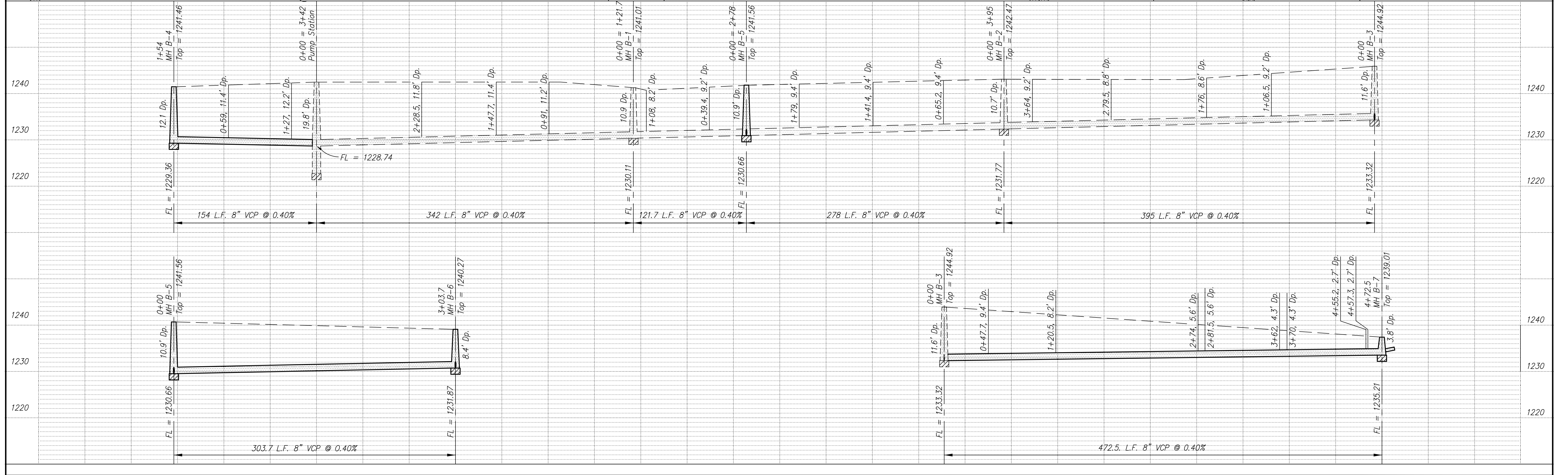
BM No. 2: U-shaped steel fence post at SW corner of mound entrance
Elev = 1246.52

BM No. 3: NW corner east headwall of 3-(8"x5") RCB south of Parsons School
Elev = 1233.65

NOTE: All Sanitary Sewer mains are 8" unless noted otherwise.



NE CORNER SECTION 17, T-14S, R-2E
3/4" bar at corner (found)
1. Spike and washer in power pole 58.70° NW
2. Spike & washer in power pole 54.56° SW
3. Spike and bottle cap in Elm tree 85.92° NE



NO.	REVISIONS	DATE	BY

PROJECT TITLE:
Sanitary Sewer As-Built Drawing

CONTRACTOR:	DESIGN:	CHECKED:
SCALE: As Shown	DRAWN:	APPROVED:

CITY OF SALINA
ENGINEERING DEPARTMENT
300 WEST ASH SALINA, KANSAS 67401
PH: 785.309.5725 FAX: 785.309.5713

DATE: Rev: July 2003
FILENAME: 577.dwg
PROJ. NO.: 94-907
SHEET: 577 OF: