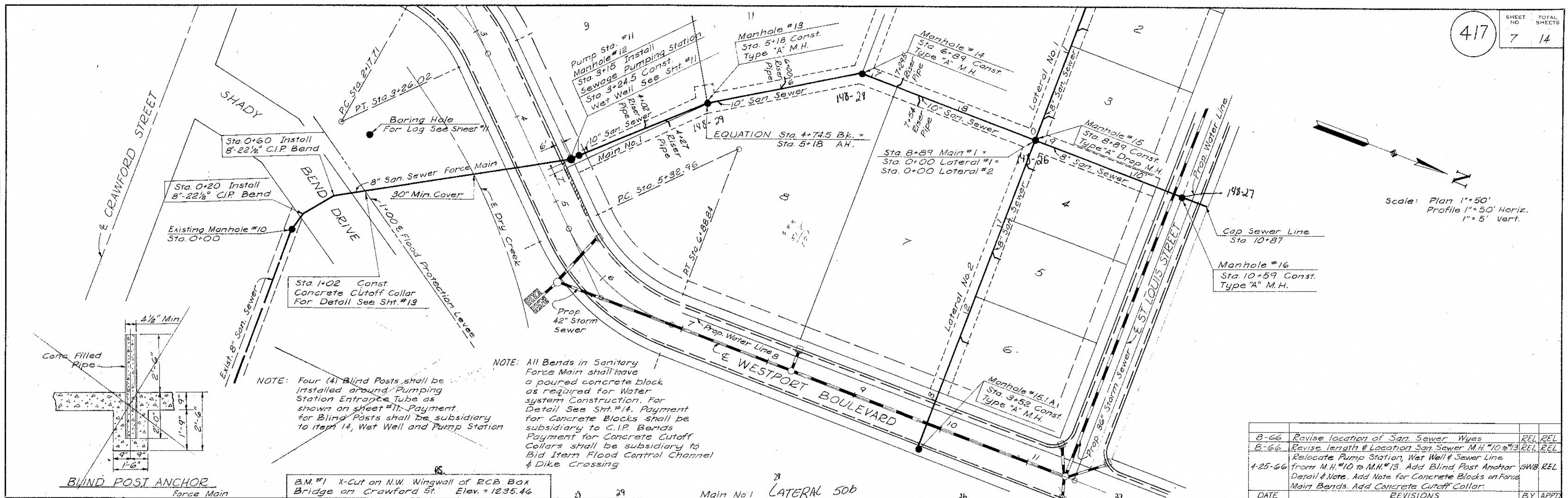
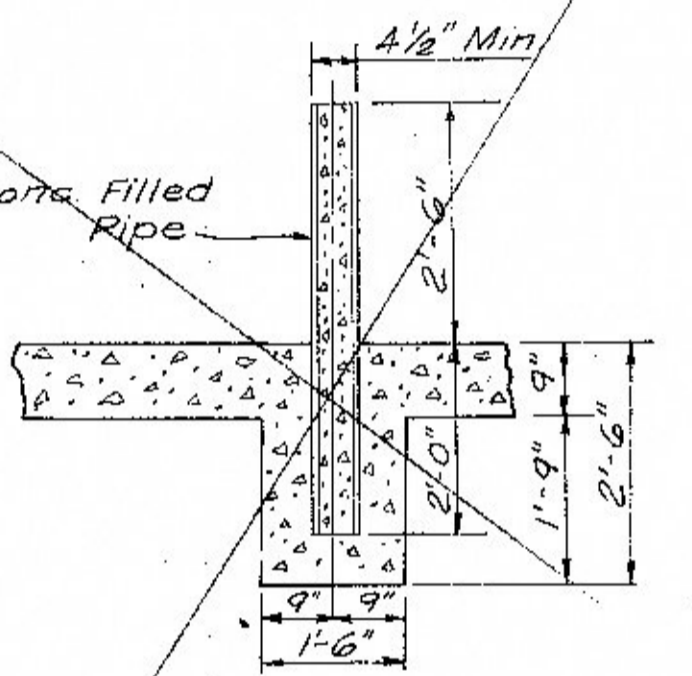


DATE	BY
2-16-66	A.M.D.
2-1-66	D.W.A.
SURVEYED	
ALIGNMENT CHECKED	
RT. OF WAY CHECKED	
PLAN	
NOTE BOOK	
NO.	



NOTE: All Bends in Sanitary Force Main shall have a poured concrete block as required for Water system Construction. For Detail See Sht. #14. Payment for Concrete Blocks shall be subsidiary to C.I.P. Bends. Payment for Concrete Cutoff Collars shall be subsidiary to Bid Item Flood Control Channel & Dike Crossing.

NOTE: Four (4) Blind Posts shall be installed around Pumping Station Entrance Tube as shown on sheet #11. Payment for Blind Posts shall be subsidiary to item 14, Wet Well and Pump Station.



B.M. #1 X-cut on N.W. Wingwall of RCB Box Bridge on Crawford St. Elev. = 1235.46

DATE	REVISIONS	BY	APP'D
8-66	Revise location of San. Sewer Wyes	REL	REL
8-66	Revise length & location San. Sewer M.H. #10 to #13	REL	REL
4-25-66	Relocate Pump Station, Wet Well & Sewer Line from M.H. #10 to M.H. #13. Add Blind Post Anchor Detail & Note. Add Note for Concrete Blocks on Force Main Bends. Add Concrete Cutoff Collar.	GWB	REL

DATE	BY
2-1-66	D.W.A.
SURVEYED	
GRADES CHECKED	
R. M. S. NOTED	
STRUCTURE NOTING CHK'D	
PROFILE	
NOTE BOOK	
NO.	

