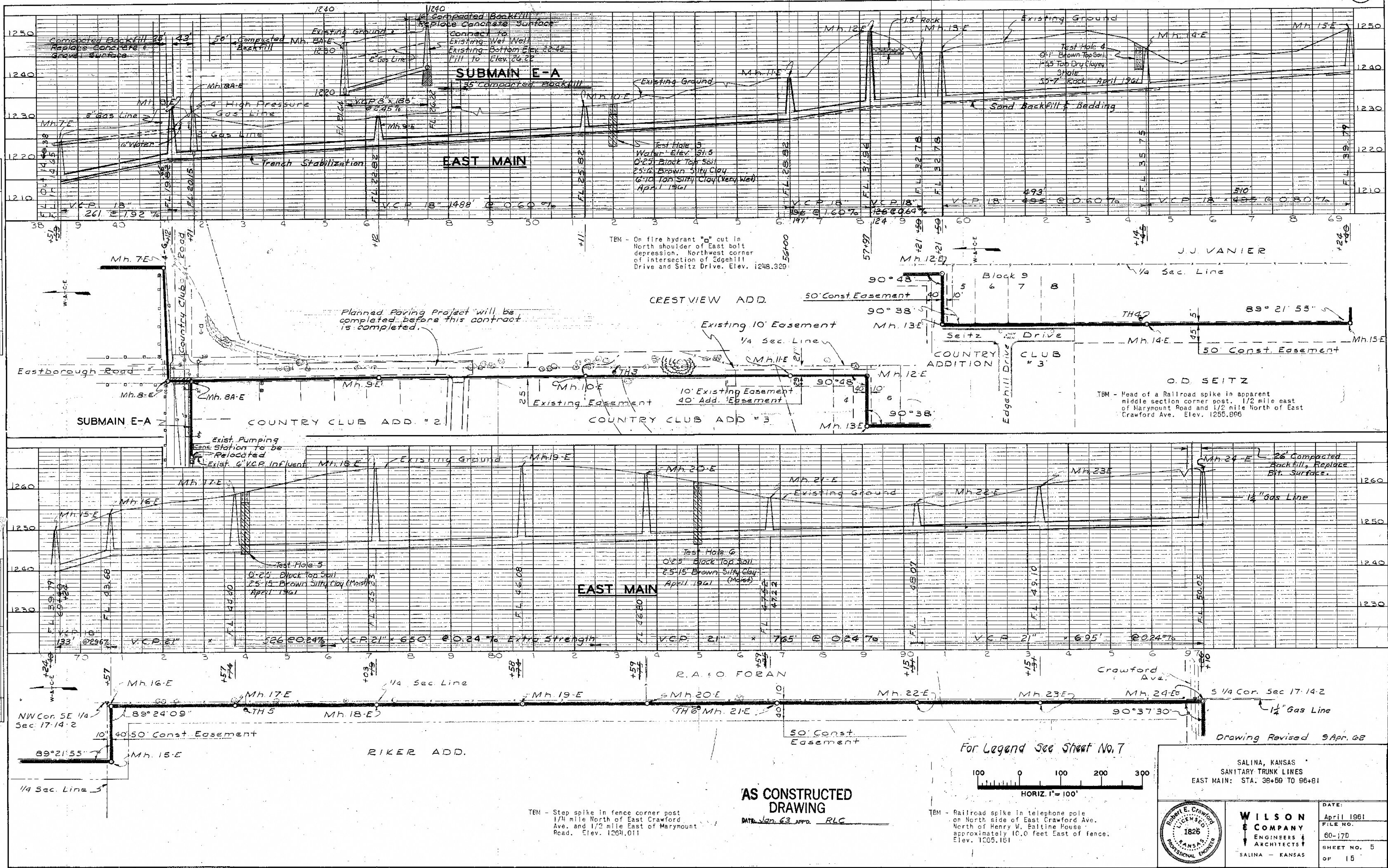


ENGINEERING DRAWING COMPANY, INC.  
1826 W. MAIN - WYOMING - WYOMING - WYOMING  
BY THE ENGINEERING BOARD OF WYOMING

DATE	1/23/63
BY	RLC
CHECKED	RLC
APPROVED	RLC
SCALE	AS SHOWN
PROJECT	SANITARY TRUNK LINES
SHEET	381



TEM - On fire hydrant "a" cut in North shoulder of East bolt depression. Northwest corner of intersection of Edgemoor Drive and Seitz Drive. Elev. 1248.329

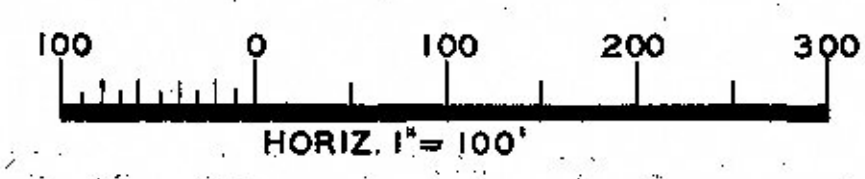
TEM - Head of a Railroad spike in apparent middle section corner post. 1/2 mile east of Marymount Road and 1/2 mile North of East Crawford Ave. Elev. 1255.896

TEM - Step spike in fence corner post 1/4 mile North of East Crawford Ave. and 1/2 mile East of Marymount Road. Elev. 1264.011

TEM - Railroad spike in telephone pole on North side of East Crawford Ave. North of Henry W. Baitline House approximately 10.0 feet East of fence. Elev. 1265.161

AS CONSTRUCTED DRAWING  
DATE Jan. 63 APPD. RLC

For Legend See Sheet No. 7



Drawing Revised 3 Apr. 62

SALINA, KANSAS  
SANITARY TRUNK LINES  
EAST MAIN: STA. 38+59 TO 96+81

WILSON & COMPANY  
ENGINEERS & ARCHITECTS  
SALINA - KANSAS

DATE: April 1961  
FILE NO. 60-17D  
SHEET NO. 5 OF 15