

**PLAN**

SUBJECT: BELMONT BLVD. SANITARY SEWER

NOTE BOOK NO. 101-1000

DATE: 10/15/62

BY: H.F. HARPER

CHECKED: G. W. BROWN

SCALE: AS SHOWN

**PROFILE**

SUBJECT: BELMONT BLVD. SANITARY SEWER

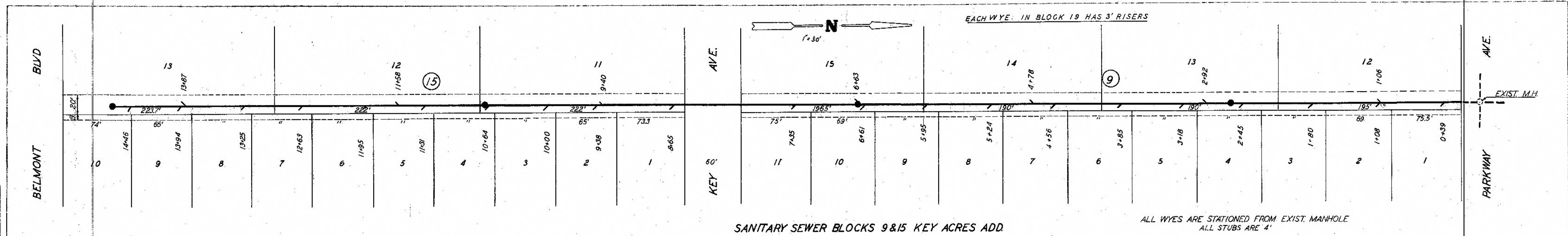
NOTE BOOK NO. 101-1000

DATE: 10/15/62

BY: H.F. HARPER

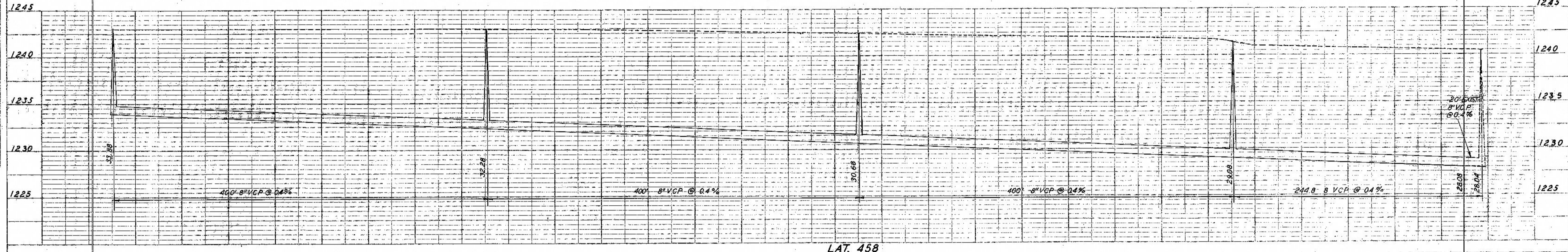
CHECKED: G. W. BROWN

SCALE: AS SHOWN

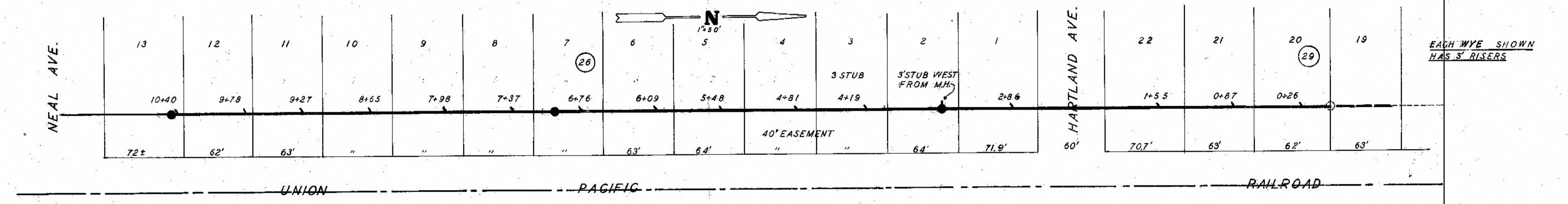


SANITARY SEWER BLOCKS 9 & 15 KEY ACRES ADD.

ALL WYES ARE STATIONED FROM EXIST. MANHOLE  
ALL STUBS ARE 4'



LAT. 458



LAT. 468

AS BUILT PLAN  
CONST. BY BROWN & BROWN  
SEPT. 1962  
H.F. HARPER CITY ENGINEER